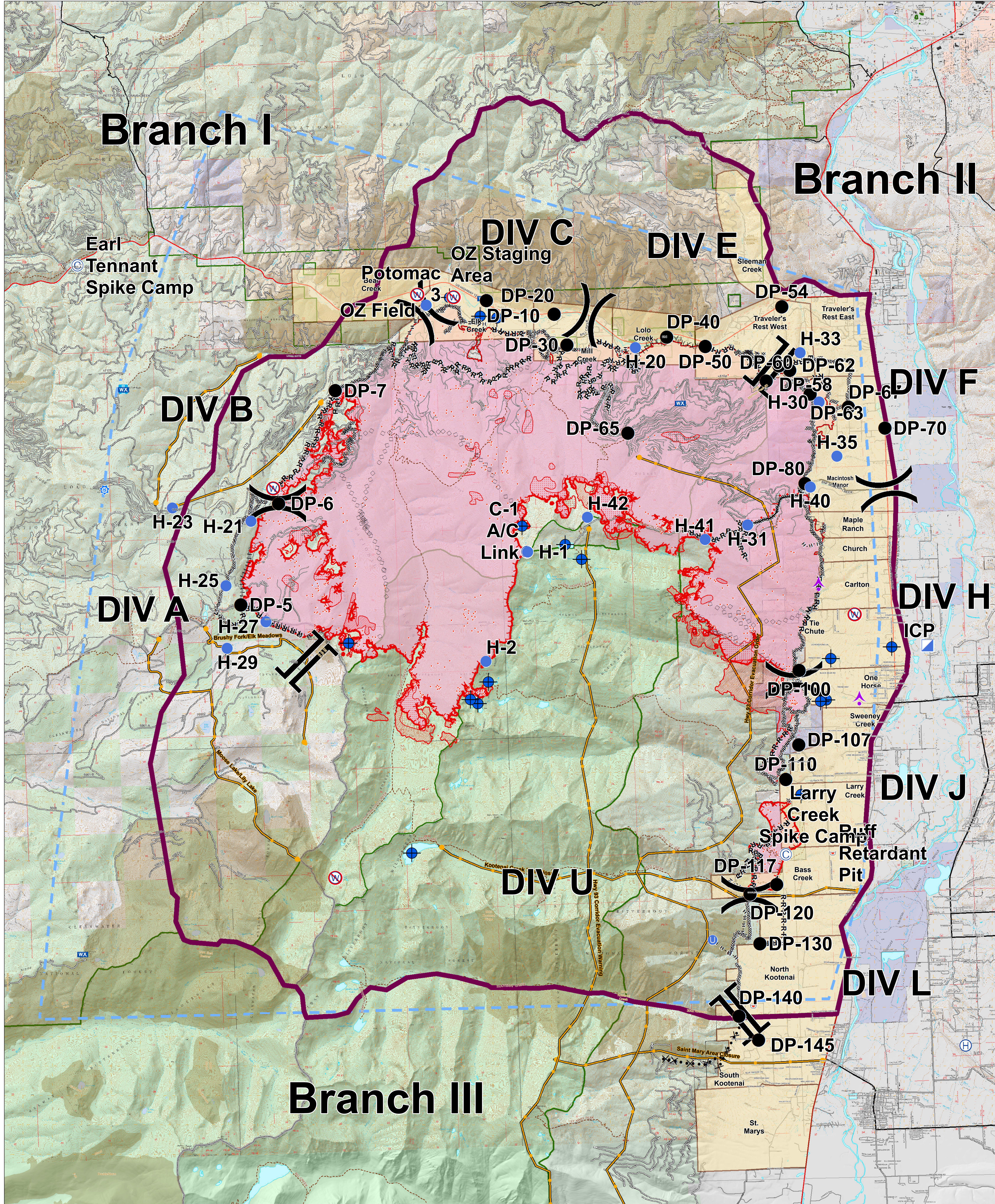


Branch I

Branch II



Branch III

Lolo Peak Fire Briefing Map

MT-LNF-001288
September 1, 2017
41,339 Acres



IR data from 8/31/2017 at 2351 hrs.

- IR Isolated Heat Sources
- IR Intense Heat
- ▨ IR Scattered Heat

0 0.5 1 2 Miles

- Drop Point
- Helispot
- ⊕ Dip Site
- ▲ Aerial Hazard
- ⊙ Camp
- Ⓜ Helibase
- Ⓜ Unimproved Landing Area
- Ⓜ ICP
- Ⓜ Lookout
- Ⓜ Mobile Weather Unit
- Ⓜ Repeater

- Ⓜ Retardant/Mud Pit
- Ⓜ Division Break
- Ⓜ Branch Break
- Ⓜ Sheriff Repeater
- Ⓜ Completed Dozer Line
- Ⓜ Completed Hand Line

- R-R- Road as Completed Line
- |||| Proposed Burnout
- Active Burnout
- Ⓜ Proposed Dozer Line
- Ⓜ Planned Fire Line
- Ⓜ Aerial Retardant Drop
- Ⓜ Air Tanker Retardant
- Ⓜ Ridge/Geographic Feature
- Ⓜ Planning Area

- Ⓜ TFR Management Action Points
- Ⓜ Completed Line
- Ⓜ Uncontrolled Fire Edge
- Ⓜ Evacuation Areas 14
- Ⓜ Highways
- Ⓜ County Roads
- Ⓜ Forest Roads
- Ⓜ Other Roads
- Ⓜ Trails

- Ⓜ Wildfire Daily Fire Perimeter
- Ⓜ Fire History 1980-Present
- Ⓜ State Boundary
- Ⓜ Wilderness
- Ⓜ Other Federal
- Ⓜ State
- Ⓜ US Forest Service