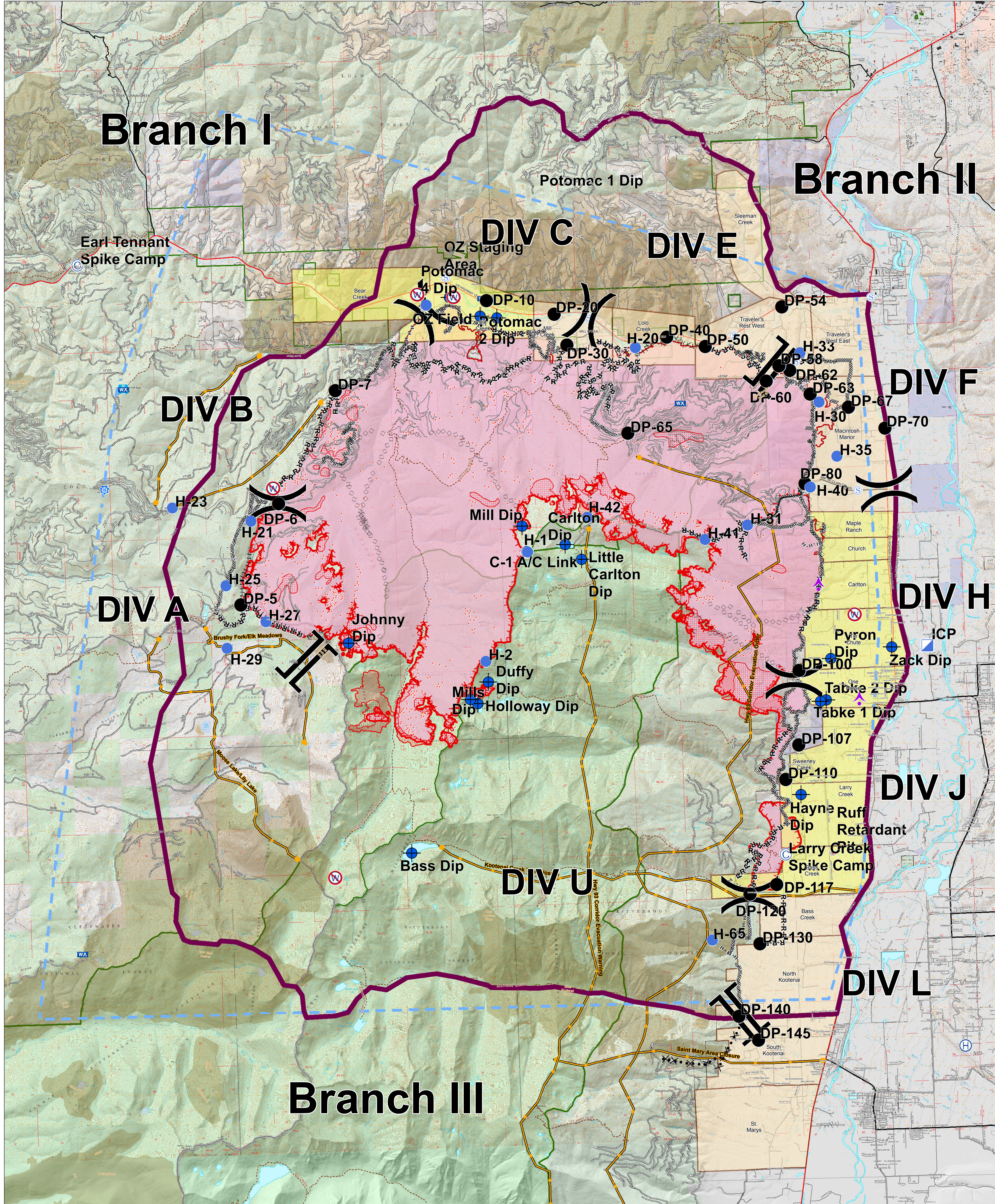


# Branch I

# Branch II

# Branch III



## Lolo Peak Fire Briefing Map

MT-LNF-001288  
September 2, 2017  
42,687 Acres



IR data from 9/02/2017 at 0002 hrs.

- IR Isolated Heat Sources
- IR Intense Heat
- IR Scattered Heat

0 0.5 1 2 Miles

- |                 |                           |                        |                             |                            |                                 |
|-----------------|---------------------------|------------------------|-----------------------------|----------------------------|---------------------------------|
| ● Drop Point    | ⊕ Helibase                | ⊗ Retardant/Mud Pit    | R-R- Road as Completed Line | ⚡ TFR                      | ⋯ Trails                        |
| ● Helispot      | ⊕ Unimproved Landing Area | ⌋ Division Break       | ⋯ Proposed Burnout          | ⚡ Management Action Points | ⬢ Wildfire Daily Fire Perimeter |
| ⊕ Dip Site      | ⊕ ICP                     | ⌋ Branch Break         | ⋯ Active Burnout            | ⚡ Completed Line           | ⬢ Fire History 1980-Present     |
| ⊕ Aerial Hazard | ⊕ Lookout                 | ⌋ Sheriff Repeater     | ⋯ Proposed Dozer Line       | ⚡ Uncontrolled Fire Edge   | ⬢ State Boundary                |
| ⊕ Camp          | ⊕ Mobile Weather Unit     | ⌋ Completed Dozer Line | ⋯ Planned Fire Line         | ⚡ Evacuation Zone          | ⬢ Wilderness                    |
|                 | ⊕ Repeater                | ⌋ Completed Hand Line  | ⋯ Aerial Retardant Drop     | ⚡ Evacuation Warning       | ⬢ Other Federal                 |
|                 |                           |                        | ⋯ Air Tanker Retardant      | ⚡ Highways                 | ⬢ State                         |
|                 |                           |                        | ⋯ Ridge/Geographic Feature  | ⚡ County Roads             | ⬢ US Forest Service             |
|                 |                           |                        | ⊕ Planning Area             | ⚡ Forest Roads             |                                 |
|                 |                           |                        |                             | ⚡ Other Roads              |                                 |