

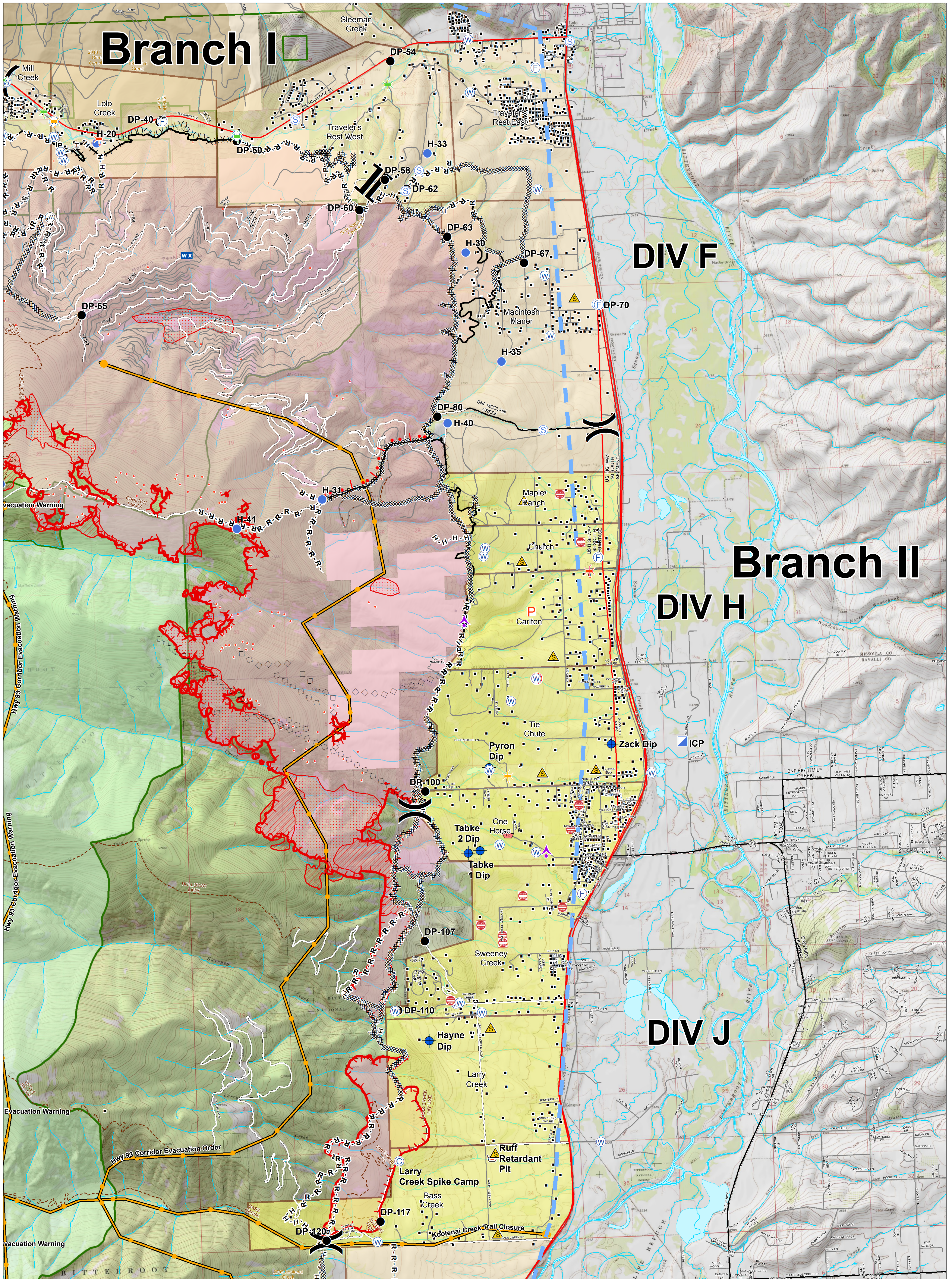
# Branch I

DIV F

# Branch II

DIV H

DIV J



## Lolo Peak Fire Structure Protection Highway 93 North

MT-LNF-001288  
September 2, 2017  
42,687 Acres



IR data from 9/02/2017 at 0002 hrs.

- IR Isolated Heat Sources
- IR Intense Heat
- IR Scattered Heat



- ✱ Bridge, Acceptable
- ✱ Bridge, Caution
- ✱ Bridge, Hazardous
- ⊗ Dangerous: Threatening People
- ⓕ FD Staging, FD Staging
- ⓕ Junk Yard Hazards
- ⚠ Safety Zone
- Ⓜ Water Source
- P Zoo

- ⚡ Aerial Hazard
- ⓐ Camp
- ⓓ Dip Site
- Drop Point
- Ⓜ Helispot
- Ⓜ ICP
- Ⓜ Internet Access
- Ⓜ Mobile Weather Unit
- Ⓜ Retardant/Mud Pit
- Ⓜ Staging Area

- Ⓜ Water Source
- Ⓜ Restricted Water Source
- ) Division Break
- | Branch Break
- Ⓜ Completed Dozer Line
- H · H · Completed Hand Line

- R · R · Road as Completed Line
- | | | | Proposed Burnout
- Active Burnout
- - - Planned Fire Line
- ◇ Aerial Retardant Drop
- ◇ Air Tanker Retardant
- ( ) Ridge/Geographic Feature
- Completed Line
- Ⓜ Uncontrolled Fire Edge

0 0.375 0.75 1.5 Miles