

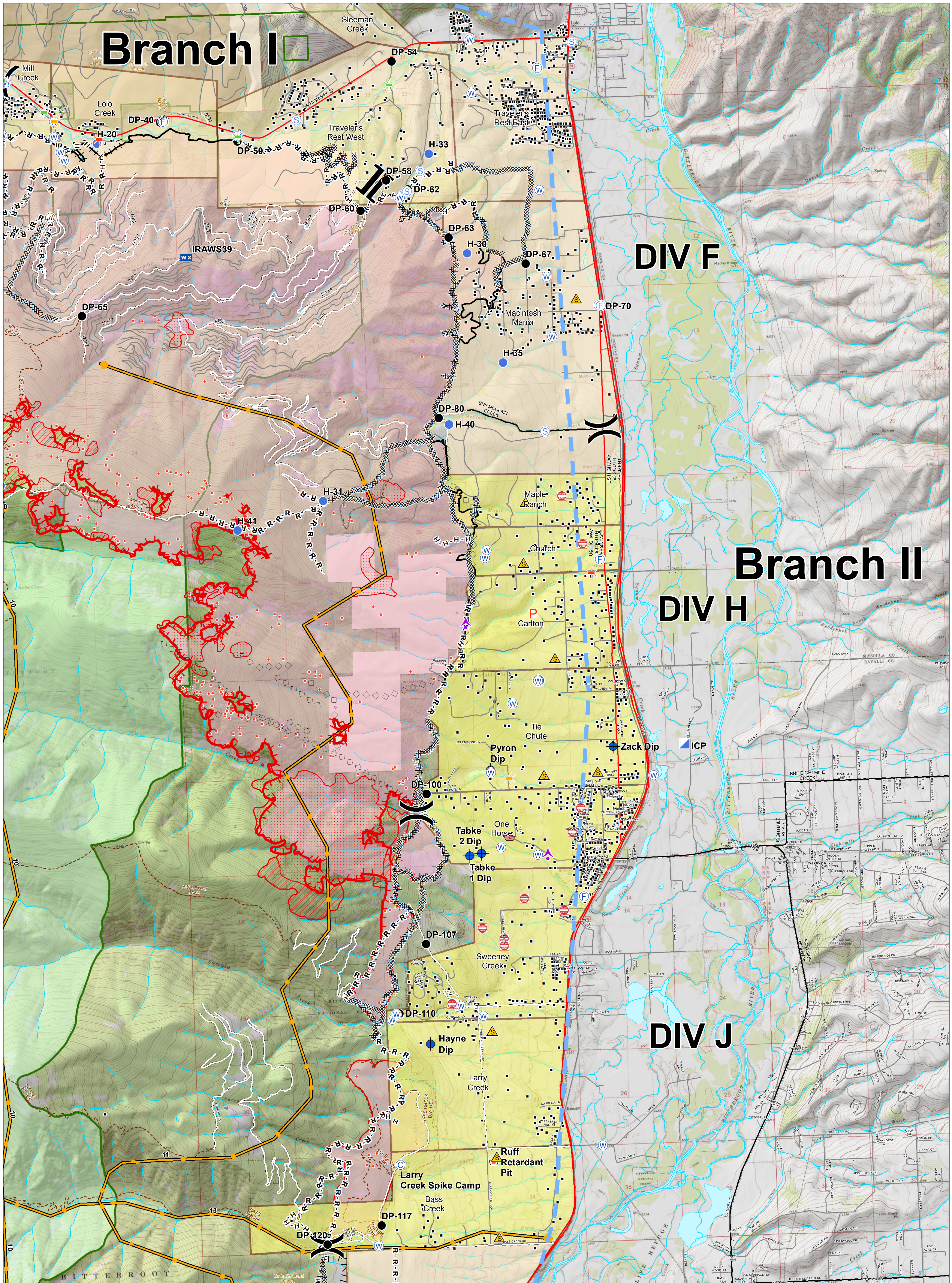
Branch I

DIV F

Branch II

DIV H

DIV J



Lolo Peak Fire Structure Protection Highway 93 North

MT-LNF-001288
September 3, 2017
45,012 Acres



IR data from 9/02/2017 at 2128 hrs.

- IR Isolated Heat Sources
- IR Intense Heat
- IR Scattered Heat



- | | | | |
|-------------------------------|---------------------|-------------------------|--------------------------------|
| Bridge, Acceptable | Aerial Hazard | Water Source | R - R - Road as Completed Line |
| Bridge, Caution | Camp | Restricted Water Source | Proposed Burnout |
| Bridge, Hazardous | Dip Site | Division Break | Planned Fire Line |
| Dangerous: Threatening People | Helispot | Branch Break | Aerial Retardant Drop |
| FD Staging, FD Staging | Staging Area | Completed Line | Uncontrolled Fire Edge |
| Junk Yard Hazards | ICP | Completed Dozer Line | TFR |
| Safety Zone | Mobile Weather Unit | Completed Hand Line | Management Action Points |
| Water Source | Retardant/Mud Pit | County Roads | |
| Zoo | Staging Area | | |

0 0.375 0.75 1.5 Miles