

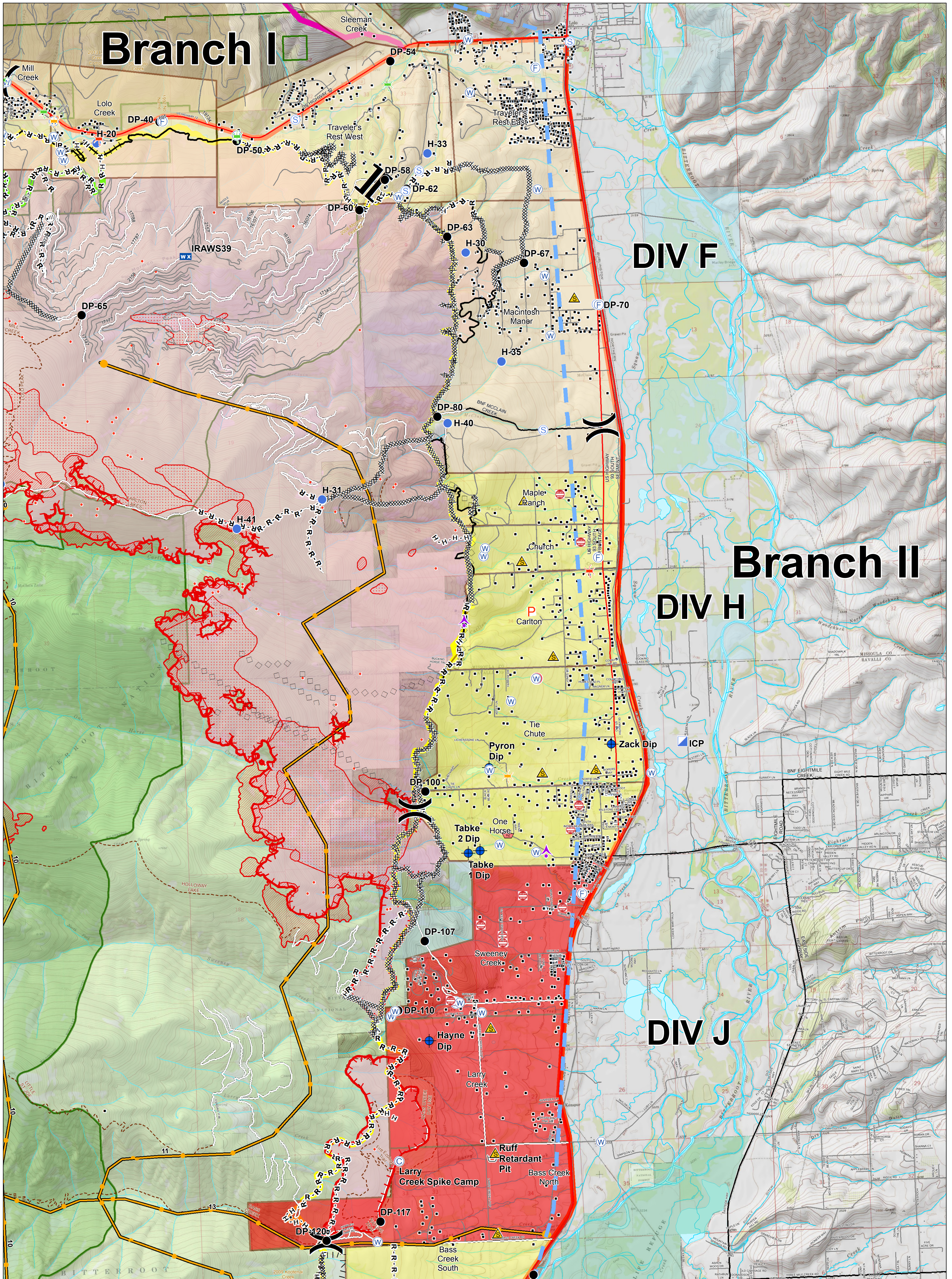
# Branch I

DIV F

# Branch II

DIV H

DIV J



## Lolo Peak Fire Structure Protection Highway 93 North

MT-LNF-001288  
September 4, 2017  
47,775 Acres



IR data from 9/04/2017 at 0121 hrs.

- IR Isolated Heat Sources
- IR Intense Heat
- IR Scattered Heat



- |  |   |   |   |   |
|--|---|---|---|---|
| <ul style="list-style-type: none"> <li>Evacuation Order</li> <li>Evacuation Warning</li> <li>Evacuation Zone</li> <li>Aerial Hazard</li> <li>Camp</li> <li>Dip Site</li> <li>Drop Point</li> <li>Hotspot</li> <li>ICP</li> <li>Mobile Weather Unit</li> <li>Retardant/Mud Pit</li> </ul> | <ul style="list-style-type: none"> <li>Division Break</li> <li>Branch Break</li> <li>Bridge, Acceptable</li> <li>Bridge, Caution</li> <li>Bridge, Hazardous</li> <li>Dangerous: Threatening People</li> <li>FD Staging, FD Staging</li> <li>Junk Yard Hazards</li> <li>Safety Zone</li> </ul> | <ul style="list-style-type: none"> <li>Water Source</li> <li>Zoo</li> <li>Completed Dozer Line</li> <li>Completed Hand Line</li> <li>R - R - Road as Completed Line</li> <li>Proposed Burnout</li> <li>Planned Fire Line</li> <li>Aerial Retardant Drop</li> <li>Completed Line</li> <li>Uncontrolled Fire Edge</li> <li>TFR</li> </ul> | <ul style="list-style-type: none"> <li>Management Action Points</li> <li>Highways</li> <li>County Roads</li> <li>Forest Roads</li> <li>Other Roads</li> <li>Structures</li> <li>Primary Line</li> <li>Alternate Line</li> <li>Contingency Line</li> <li>Emergency Line</li> <li>Trails</li> </ul> | <ul style="list-style-type: none"> <li>Fire History 1980-Present</li> <li>Streams</li> <li>Waterbodies</li> <li>State Boundary</li> <li>Forest Boundaries</li> <li>Wilderness</li> <li>State</li> <li>US Bureau of Land Management</li> <li>US Forest Service</li> <li>USFWS</li> <li>Weyerhaeuser</li> </ul> |
|--|---|---|---|---|

