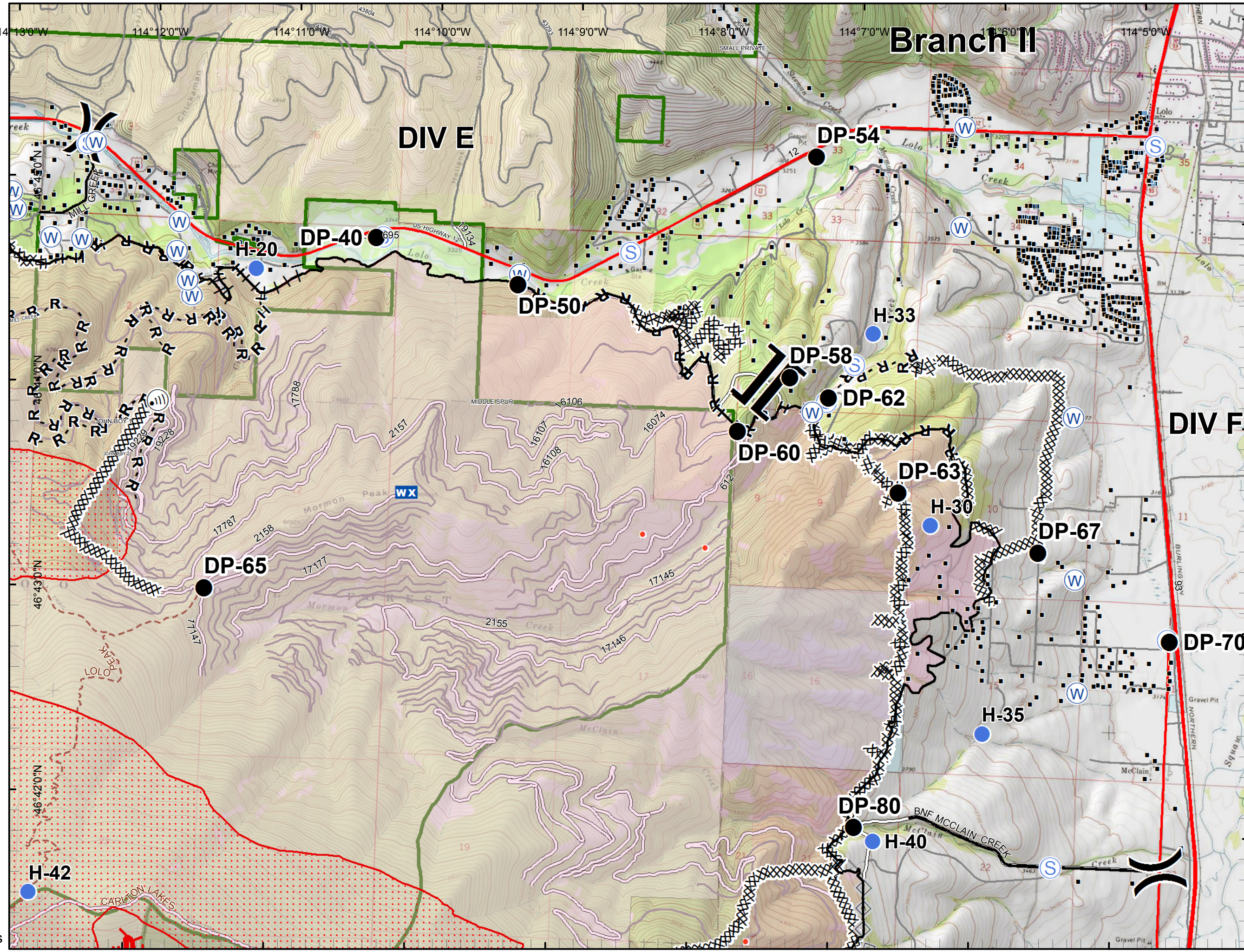
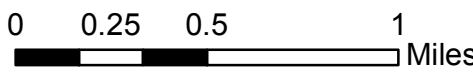


Lolo Peak Fire
 MT-LNF-001288
 IAP Map, Day Shift
 Page 5 Div E, F
 09/05/2017

IR data from 9/04/2017 at 2222 hrs.

- IR Isolated Heat Sources
- ▨ IR Intense Heat
- ▨ IR Scattered Heat
- Drop Point
- Helispot
- Ⓜ Internet Access
- WX Mobile Weather Unit
- Ⓢ Staging Area
- Ⓜ Water Source
- ⌋ Division Break
- ⌋ Branch Break
- Structures
- Completed Line
- ▬ Uncontrolled Fire Edge
- ▨ Completed Dozer Line
- H - Completed Hand Line
- R - Road as Completed Line
- || Proposed Burnout
- ◇ Aerial Retardant Drop
- ▨ Wildfire Daily Fire Perimeter
- Highways
- County Roads
- Forest Roads
- Other Roads
- Trails
- State Boundary
- Forest Boundaries
- Wilderness
- State
- US Forest Service
- Weyerhaeuser



Branch II

DIV E

DIV F

H-42

DP-40

DP-50

DP-54

H-33

DP-58

DP-62

DP-60

DP-63

H-30

DP-67

DP-65

H-35

DP-80

H-40

DP-70