

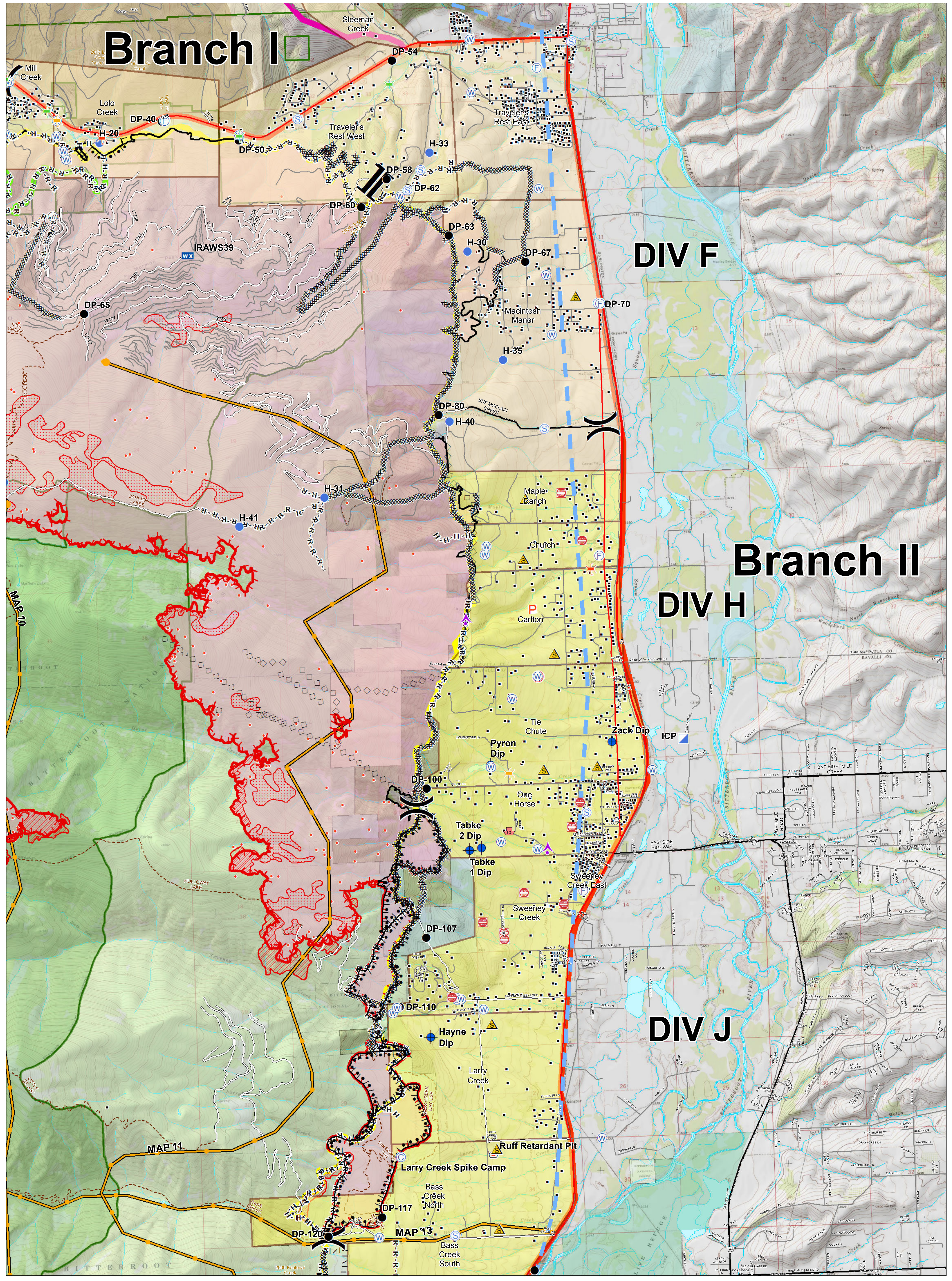
Branch I

DIV F

Branch II

DIV H

DIV J



Lolo Peak Fire Structure Protection Highway 93 North

MT-LNF-001288
September 6, 2017
48,686 Acres



IR data from 9/05/2017 at 0028 hrs.

- IR Isolated Heat Sources
- IR Intense Heat
- IR Scattered Heat

- | | | | | |
|---|---|--|---|--|
| <ul style="list-style-type: none"> ■ Evacuation Order ■ Evacuation Warning ■ Evacuation Zone ▲ Aerial Hazard ● Camp ● Dip Site ● Drop Point ● Helispot ■ ICP ■ Mobile Weather Unit ■ Retardant/Mud Pit | <ul style="list-style-type: none"> ⌋ Division Break ⌋ Branch Break ⌋ Bridge, Acceptable ⌋ Bridge, Caution ⌋ Bridge, Hazardous ⌋ Dangerous: Threatening People ⌋ FD Staging, FD Staging ⌋ Junk Yard Hazards ⌋ Safety Zone | <ul style="list-style-type: none"> Ⓜ Water Source Ⓟ Zoo ⊘ Completed Dozer Line H-H Completed Hand Line R-R Road as Completed Line ⌋ Proposed Burnout ⌋ Completed Burnout ⊘ Proposed Dozer Line ⌋ Planned Fire Line ◇ Aerial Retardant Drop ⌋ Completed Line | <ul style="list-style-type: none"> ■ Uncontrolled Fire Edge ■ TFR ■ Highways ■ County Roads ■ Forest Roads ■ Other Roads ■ Structures ■ Fire History 1980-Present ■ Primary Line ■ Alternate Line ■ Contingency Line | <ul style="list-style-type: none"> ■ Emergency Line --- Trails ■ Streams ■ Waterbodies ■ State Boundary ■ Forest Boundaries ■ Wilderness ■ State ■ US Forest Service ■ USFWS ■ Weyerhaeuser |
|---|---|--|---|--|

