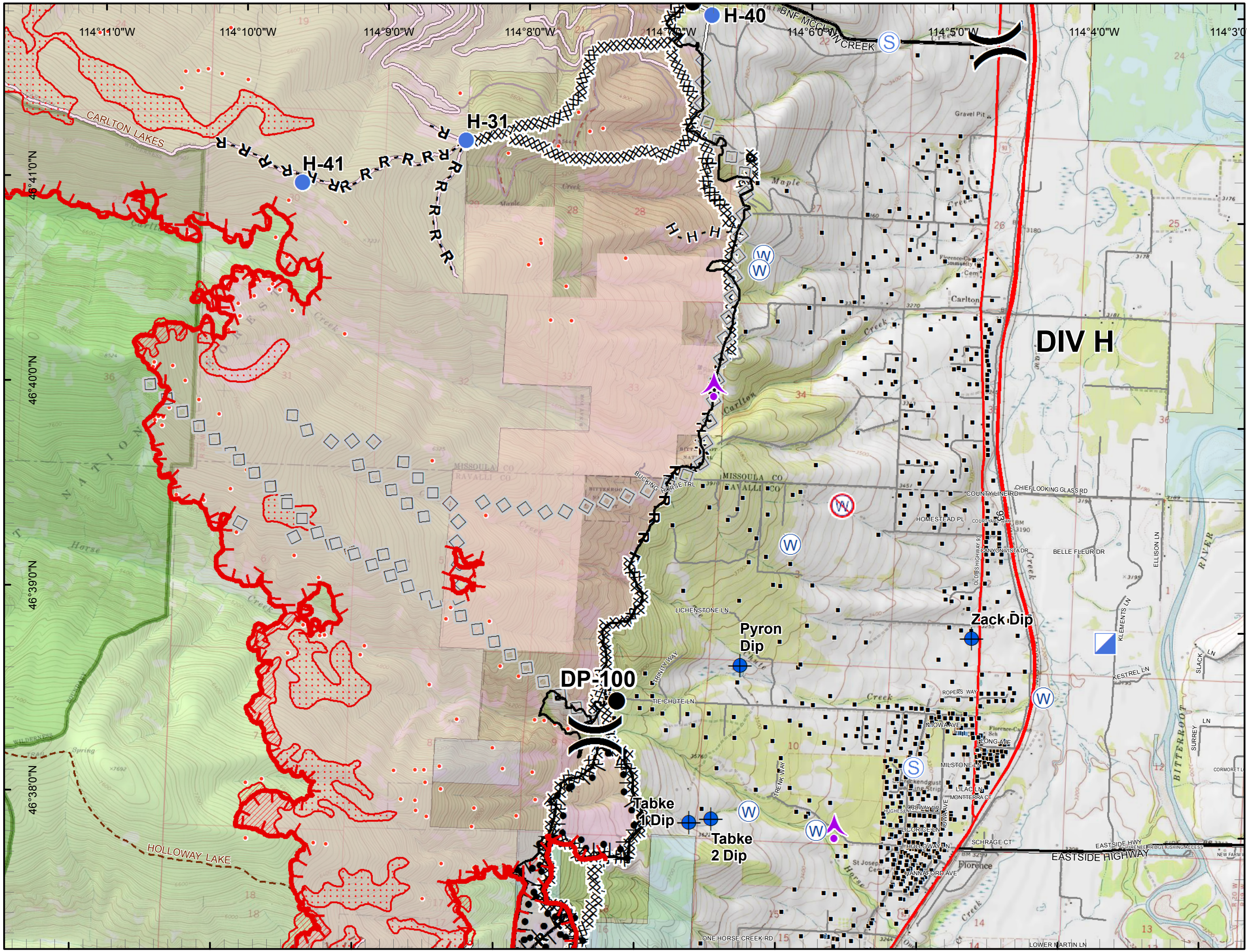
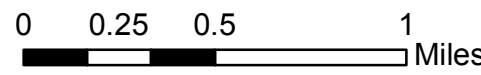


Lolo Peak Fire
 MT-LNF-001288
 IAP Map, Day Shift
 Page 6 Div H
 09/06/2017

IR data from 9/06/2017 at 0028 hrs.

- IR Isolated Heat Sources
- IR Intense Heat
- IR Scattered Heat
- ▲ Aerial Hazard
- Dip Site
- Drop Point
- Helispot
- ICP
- S Staging Area
- W Water Source
- W Restricted Water Source
-) Division Break
- Structures
- Completed Line
- Uncontrolled Fire Edge
- Completed Dozer Line
- H - Completed Hand Line
- R - Road as Completed Line
- Completed Burnout
- ◇ Aerial Retardant Drop
- Wildfire Daily Fire Perimeter
- Highways
- County Roads
- Forest Roads
- Other Roads
- State Boundary
- Wilderness
- State
- US Forest Service
- Weyerhaeuser



DIV H

DP-100

Pyron Dip

Zack Dip

Tabke Dip

Tabke 2 Dip