

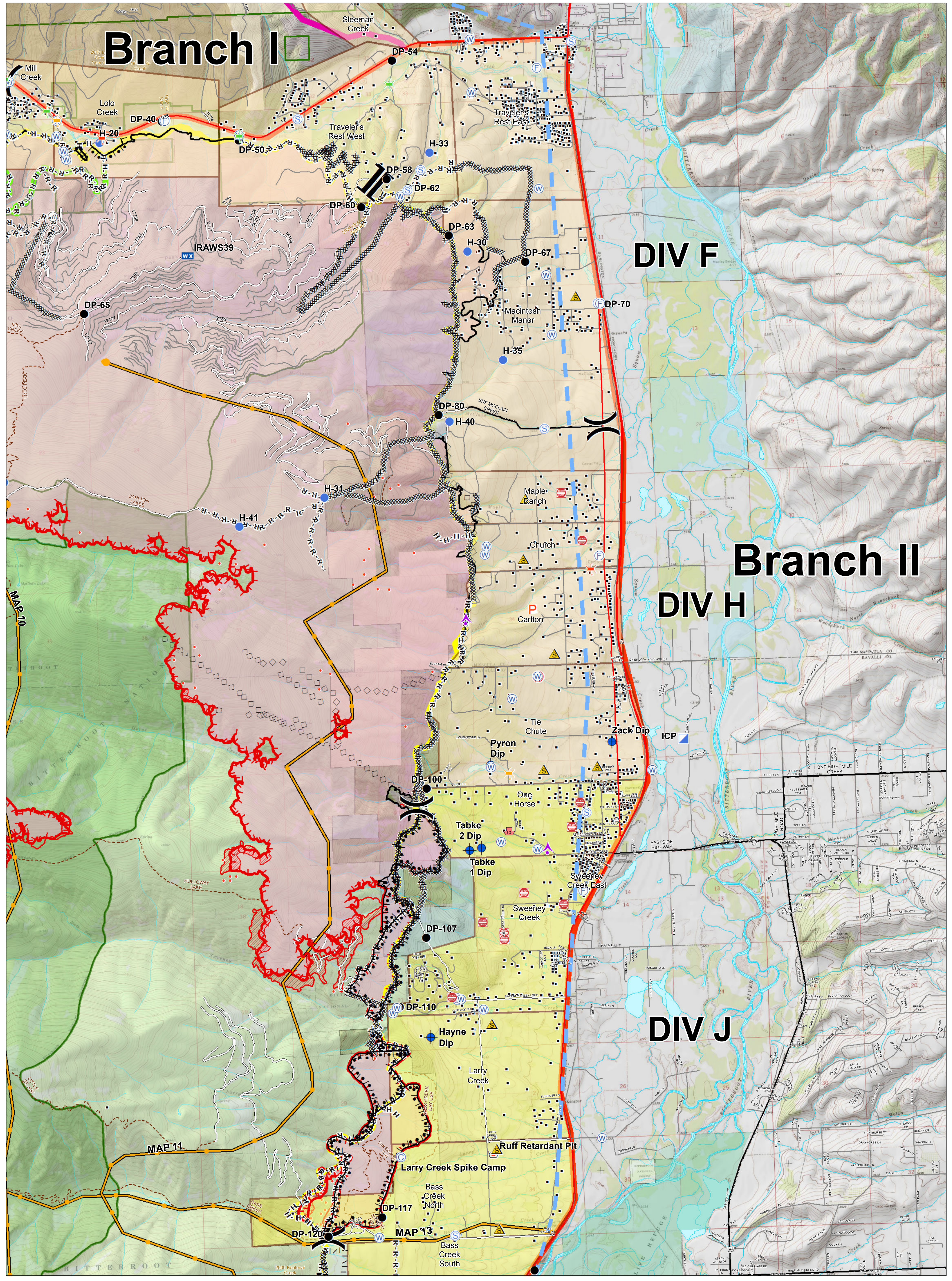
Branch I

DIV F

Branch II

DIV H

DIV J



Lolo Peak Fire Structure Protection Highway 93 North



MT-LNF-001288
September 7, 2017
49,123 Acres

IR data from 9/06/2017 at 2159 hrs.

- IR Isolated Heat Sources
- IR Intense Heat
- ▨ IR Scattered Heat

- | | | | | |
|---|--|---|---|--|
| Evacuation Warning | | W Water Source | Uncontrolled Fire Edge | Emergency Line |
| Evacuation Zone | | P Zoo | TFR | Trails |
| ▲ Aerial Hazard | | Completed Dozer Line | Highways | Streams |
| C Camp | | Completed Hand Line | County Roads | Waterbodies |
| ● Dip Site | | Road as Completed Line | Forest Roads | State Boundaries |
| ● Drop Point | | Proposed Burnout | Other Roads | Forest Boundaries |
| ● Helispot | | Completed Burnout | Structures | Wilderness |
| ● ICP | | Proposed Dozer Line | Fire History 1980-Present | State |
| Wx Mobile Weather Unit | | Planned Fire Line | Primary Line | US Forest Service |
| R Retardant/Mud Pit | | Aerial Retardant Drop | Alternate Line | USFWS |
| | | Completed Line | Contingency Line | Weyerhaeuser |

