

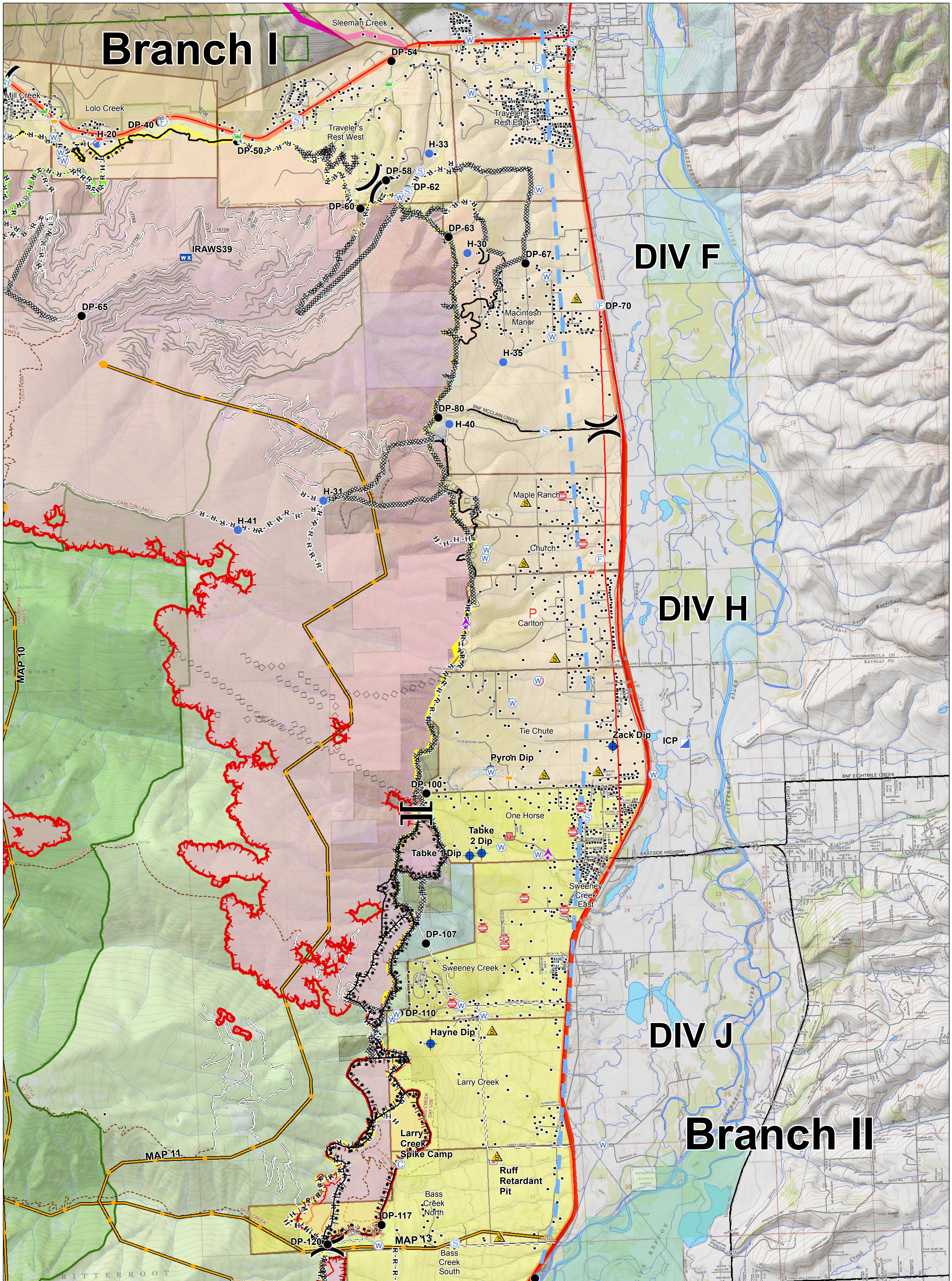
Branch I

DIV F

DIV H

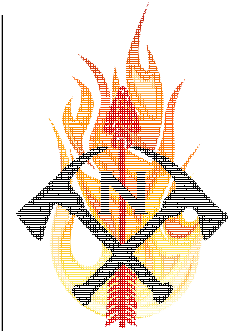
DIV J

Branch II



Lolo Peak Fire Structure Protection Highway 93 North

MT-LNF-001288
September 9, 2017
49,910 Acres



- | | | | | |
|---------------------|-------------------------------|------------------------|---------------------------|-------------------|
| Evacuation Warning | Division Break | Water Source | Uncontrolled Fire Edge | Emergency Line |
| Evacuation Zone | Branch Break | Zoo | TFR | Trails |
| Aerial Hazard | Bridge, Acceptable | Completed Dozer Line | Highways | Streams |
| Camp | Bridge, Caution | Completed Hand Line | County Roads | Waterbodies |
| Dip Site | Bridge, Hazardous | Road as Completed Line | Forest Roads | State Boundaries |
| Drop Point | Dangerous: Threatening People | Proposed Burnout | Other Roads | Forest Boundaries |
| Helispot | FD Staging, FD Staging | Completed Burnout | Structures | Wilderness |
| Mobile Weather Unit | Planned Fire Line | Completed Dozer Line | Fire History 1980-Present | State |
| Retardant/Mud Pit | Junk Yard Hazards | Planned Fire Line | Primary Line | US Forest Service |
| | Safety Zone | Aerial Retardant Drop | Alternate Line | USFWS |
| | | Completed Line | Contingency Line | Weyerhaeuser |

0 0.25 0.5 1 Miles