

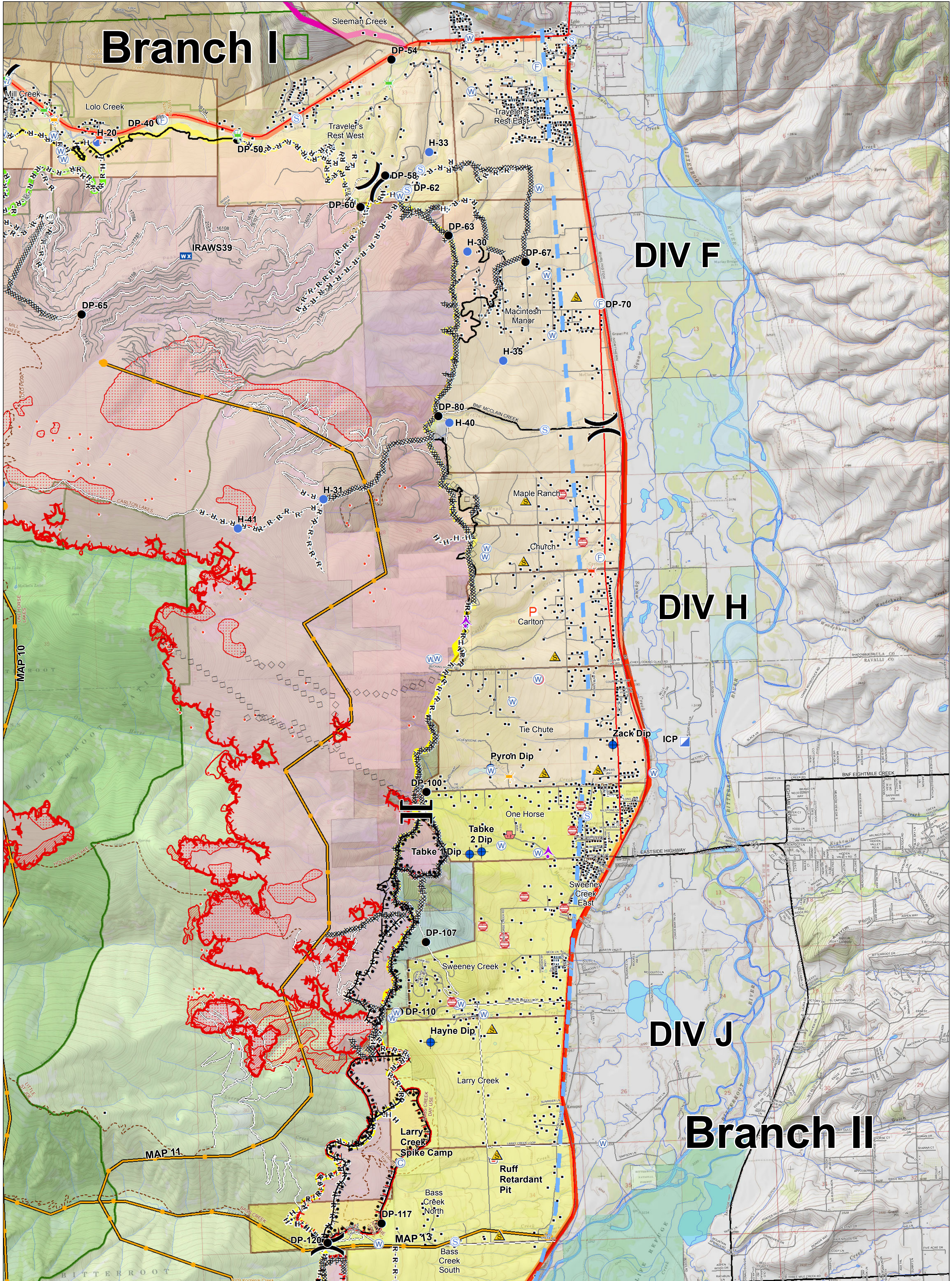
Branch I

DIV F

DIV H

DIV J

Branch II



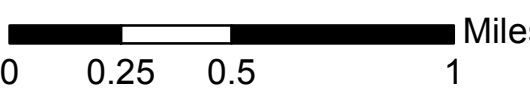
Lolo Peak Fire Structure Protection Highway 93 North

MT-LNF-001288
September 11, 2017
51,788 Acres



IR data from 9/11/2017 at 0032 hrs.

- IR Isolated Heat Sources
- ▨ IR Intense Heat
- ▩ IR Scattered Heat



- | | | | | |
|---|---|---|---|--|
| Evacuation Warning | Division Break | Water Source | TFR | Trails |
| Evacuation Zone | Branch Break | P Zoo | Highways | Streams |
| ▲ Aerial Hazard | Bridge, Acceptable | Completed Dozer Line | County Roads | Waterbodies |
| Camp | + Bridge, Caution | Completed Hand Line | Forest Roads | State Boundary |
| ● Dip Site | + Bridge, Hazardous | Road as Completed Line | Other Roads | Forest Boundaries |
| ● Drop Point | + Dangerous: Threatening People | Proposed Burnout | Structures | Wilderness |
| ● Helispot | Completed Burnout | Completed Burnout | Fire History 1980-Present | State |
| ICP | Planned Fire Line | Completed Burnout | Primary Line | US Forest Service |
| Mobile Weather Unit | Aerial Retardant Drop | Completed Burnout | Alternate Line | USFWS |
| Retardant/Mud Pit | Completed Line | Completed Line | Contingency Line | Weyerhaeuser |
| | Junk Yard Hazards | Completed Line | Emergency Line | |
| | Safety Zone | Uncontrolled Fire Edge | | |