

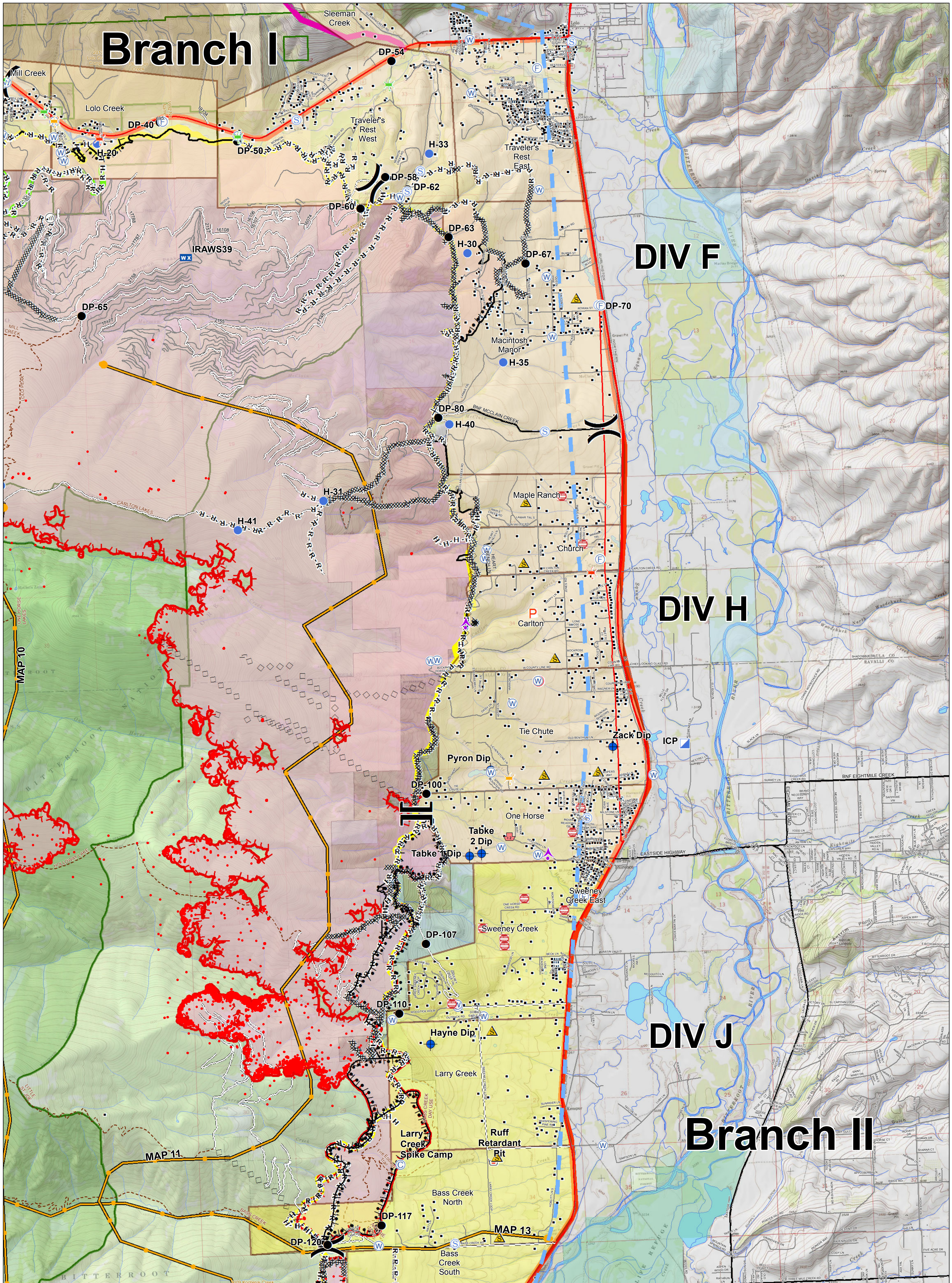
# Branch I

DIV F

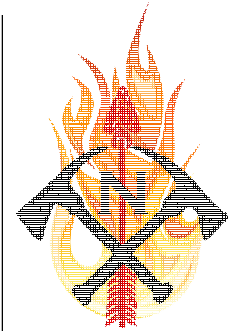
DIV H

DIV J

# Branch II



## Lolo Peak Fire Structure Protection Highway 93 North



MT-LNF-001288  
September 14, 2017  
52,189 Acres

09/14/2017 VIIRS 24hr heat sources.

VIIRS 24hr heat sources

Fire Perimeter

- |                     |                               |                        |                           |                   |
|---------------------|-------------------------------|------------------------|---------------------------|-------------------|
| Evacuation Warning  | Division Break                | Water Source           | Uncontrolled Fire Edge    | Emergency Line    |
| Evacuation Zone     | Branch Break                  | Zoo                    | TFR                       | Trails            |
| Aerial Hazard       | Bridge, Acceptable            | Completed Dozer Line   | Highways                  | Streams           |
| Camp                | Bridge, Caution               | Completed Hand Line    | County Roads              | Waterbodies       |
| Dip Site            | Bridge, Hazardous             | Road as Completed Line | Forest Roads              | State Boundaries  |
| Drop Point          | Dangerous: Threatening People | Proposed Burnout       | Other Roads               | Forest Boundaries |
| Hotspot             | FD Staging, FD Staging        | Completed Burnout      | Structures                | Wilderness        |
| ICP                 | Planned Fire Line             | Proposed Dozer Line    | Fire History 1980-Present | State             |
| Mobile Weather Unit | Junk Yard Hazards             | Planned Fire Line      | Primary Line              | US Forest Service |
| Retardant/Mud Pit   | Safety Zone                   | Completed Line         | Alternate Line            | USFWS             |
|                     |                               |                        | Contingency Line          | Weyerhaeuser      |

0 0.25 0.5 1 Miles