

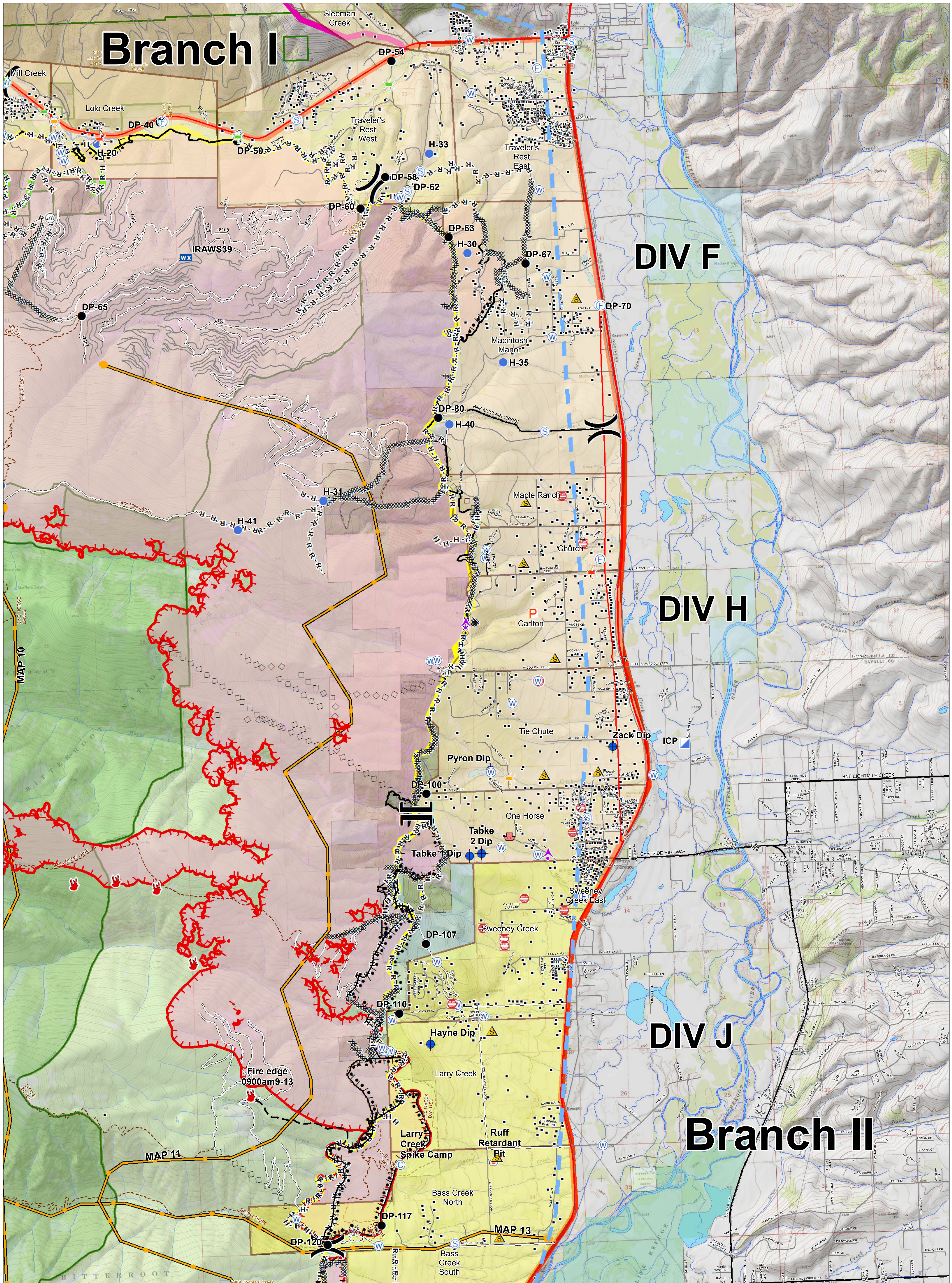
Branch I

DIV F

DIV H

DIV J

Branch II

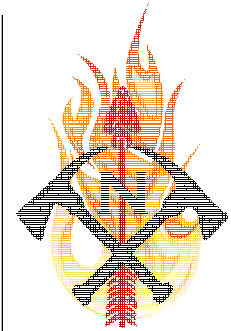


Lolo Peak Fire Structure Protection Highway 93 North

MT-LNF-001288
September 15, 2017
53,436 Acres



Fire Perimeter



- | | | | | |
|---------------------|-------------------------------|------------------------|---------------------------|-------------------|
| Evacuation Warning | Division Break | Water Source | TFR | Trails |
| Evacuation Zone | Branch Break | Zoo | Highways | Streams |
| Aerial Hazard | Bridge, Acceptable | Completed Dozer Line | County Roads | Waterbodies |
| Camp | Bridge, Caution | Completed Hand Line | Forest Roads | State Boundary |
| Dip Site | Bridge, Hazardous | Road as Completed Line | Other Roads | Forest Boundaries |
| Drop Point | Dangerous: Threatening People | Proposed Burnout | Structures | Wilderness |
| Helispot | FD Staging, FD Staging | Completed Burnout | Fire History 1980-Present | State |
| Mobile Weather Unit | Planned Fire Line | Aerial Retardant Drop | Primary Line | US Forest Service |
| Retardant/Mud Pit | Completed Line | Completed Line | Contingency Line | USFWS |
| | Safety Zone | Uncontrolled Fire Edge | Emergency Line | Weyerhaeuser |

