

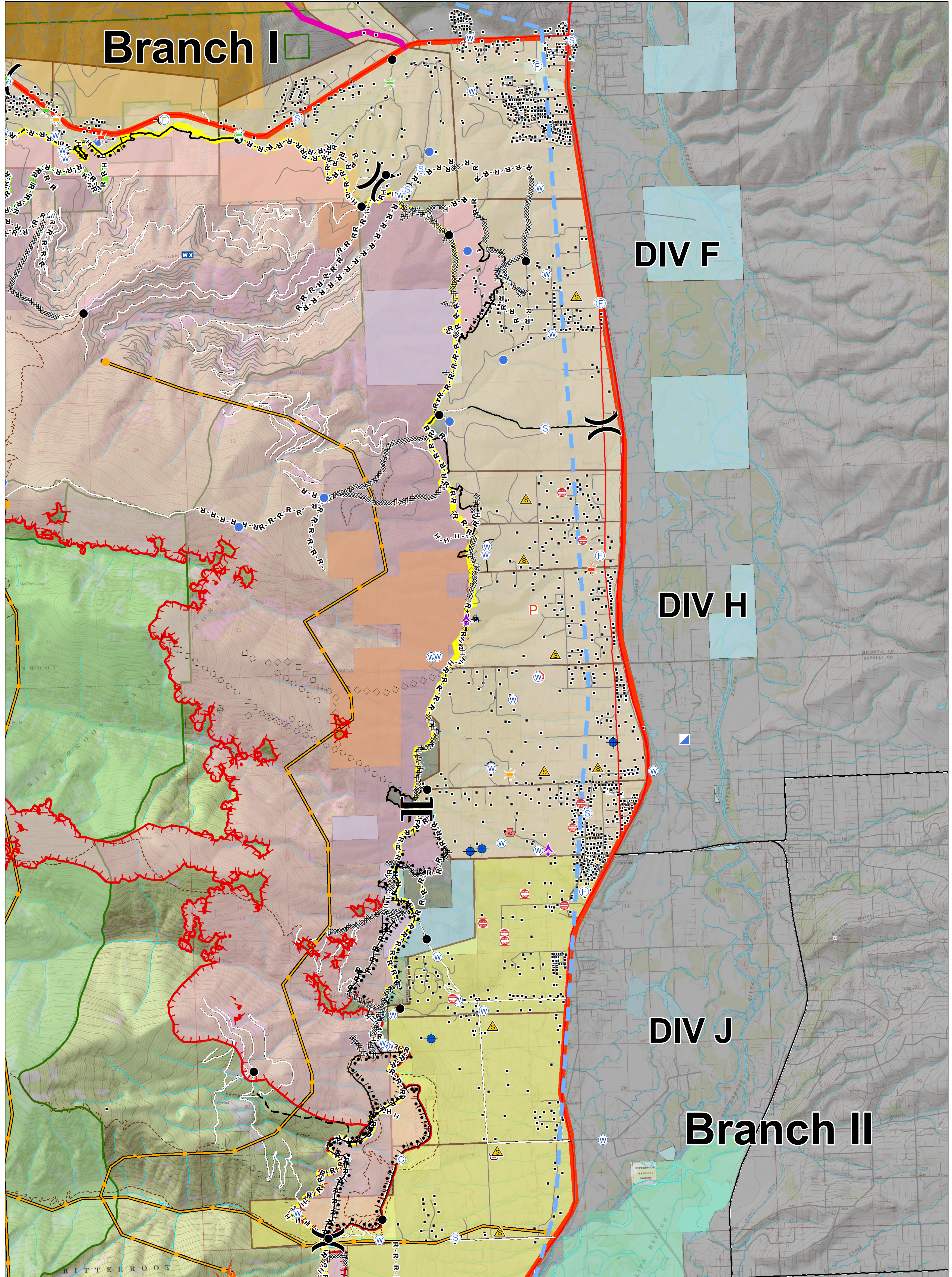
Branch I

DIV F

DIV H

DIV J

Branch II



Lolo Peak Fire Structure Protection Highway 93 North

MT-LNF-001288
September 16, 2017
53,462 Acres



0 0.25 0.5 1 Miles

- | | | | | |
|---------------------|-------------------------------|------------------------|---------------------------|-------------------|
| Evacuation Warning | Division Break | Water Source | TFR | Trails |
| Evacuation Zone | Branch Break | Zoo | Highways | State Boundary |
| Aerial Hazard | Bridge, Acceptable | Completed Dozer Line | County Roads | Forest Boundaries |
| Camp | Bridge, Caution | Completed Hand Line | Forest Roads | Wilderness |
| Dip Site | Bridge, Hazardous | Road as Completed Line | Other Roads | State (MT) |
| Drop Point | Dangerous: Threatening People | Proposed Burnout | Structures | US Forest Service |
| Helispot | FD Staging, FD Staging | Completed Burnout | Fire History 1980-Present | USFWS |
| ICP | Planned Fire Line | Aerial Retardant Drop | Primary Line | Weyerhaeuser |
| Mobile Weather Unit | Junk Yard Hazards | Completed Line | Alternate Line | |
| Retardant/Mud Pit | Safety Zone | Uncontrolled Fire Edge | Contingency Line | |
| | | | Emergency Line | |