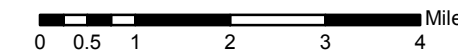


# Lolo Peak Fire

## Pilot Map

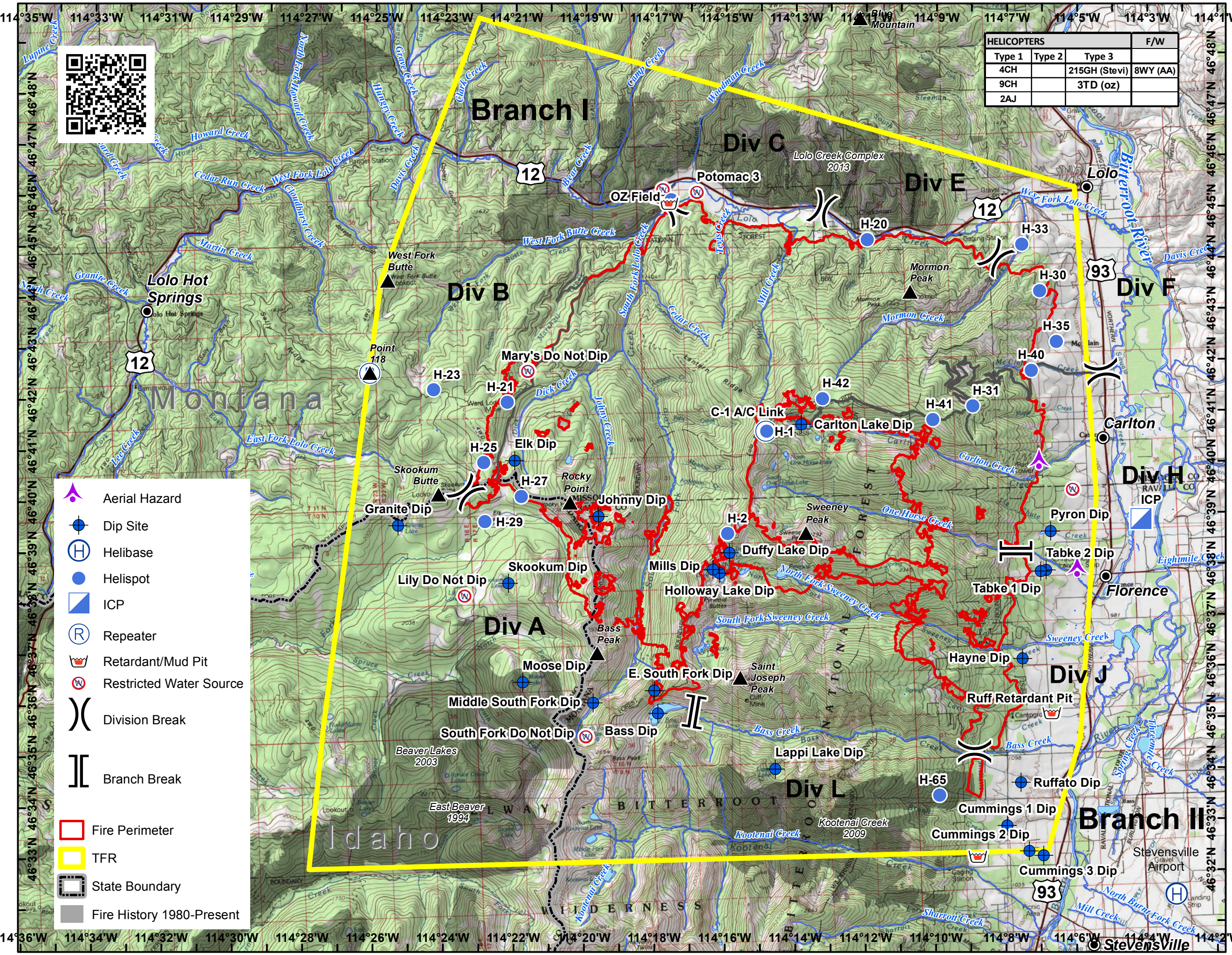
MT-LNF-001288  
September 17, 2017  
53, 753 Acres



HELICOPTERS			
Type 1	Type 2	Type 3	F/W
4CH		215GH (Stevi)	8WY (AA)
9CH		3TD (oz)	
2AJ			

Frequencies	Type	Freq.
TFR/Fixed-Wing/ Link	AM	128.6500
Rotorwing	AM	123.6000
A/G Primary	FM TX/RX	168.6375
A/G Secondary	FM TX/RX	164.9500
A.I. A/G 3	FM TX/RX	167.0625
TOLC	FM RX/TX	168.0125
Deck		163.1000
Tan A/G Life Flight	FM RX/TX	155.3400N
White A/G Hospitals	TX tone 156.7	155.280N
<i>use when talking direct to Hospital</i>		
Air Guard	FM RX/TX	168.6250
		110.9 TT/RT

Label	Latitude	Longitude
ICP	46 38.456'	-114 4.552'
CMD-1 A/C Link	46 40.910'	-114 14.318'
CMD-2	46 42.432'	-113 58.978'
OZ Field Helispot	46 45.511'	-114 16.783'
H-1	46 40.910'	-114 14.301'
H-2	46 38.930'	-114 15.513'
H-20 (Emergency Only)	46 44.594'	-114 11.236'
H-21	46 41.648'	-114 21.662'
H-23	46 41.942'	-114 23.743'
H-25	46 40.482'	-114 22.384'
H-27	46 39.809'	-114 21.243'
H-29	46 39.329'	-114 22.406'
H-30 (Emergency Only)	46 43.470'	-114 6.378'
H-31	46 41.260'	-114 8.405'
H-33	46 44.393'	-114 6.840'
H-35 (Emergency Only)	46 42.464'	-114 5.956'
H-40 (Emergency Only)	46 41.918'	-114 6.700'
H-41	46 41.022'	-114 9.556'
H-42	46 41.507'	-114 12.675'
H-65	46 33.660'	-114 9.745'
Bass Lake Dip	46 35.454'	-114 17.673'
Carlton Lake Dip	46 41.020'	-114 13.301'
Duffy Lake Dip	46 38.548'	-114 15.475'
Hayne Dip	46 36.273'	-114 7.248'
Holloway Lake Dip	46 38.157'	-114 15.777'
Johnny Dip	46 39.349'	-114 19.166'
Pyron Dip	46 38.752'	-114 6.320'
Tabke 1 Dip	46 37.975'	-114 6.639'
Tabke 2 Dip	46 37.996'	-114 6.481'
Ruff Retardant Pit	46 34.984'	-114 5.717'
Elk Dip	46 40.50'	-114 21.50'
Granite Dip	46 39.30'	-114 24.88'
Skookum Dip	46 38.10'	-114 21.80'
Moose Dip	46 36.15'	-114 21.48'
Cummings 1 Dip	46 33.01'	-114 07.85'
Cummings 2 Dip	46 32.50'	-114 07.25'
Cummings 3 Dip	46 32.40'	-114 06.85'
Lappi Lake Dip	46 34.28'	-114 14.39'
Middle South Fork Dip	46 35.70'	-114 19.50'
E. South Fork Dip	46 35.90'	-114 17.75'
Ruff ffato Dip	46 33.85'	-114 07.42'



- Aerial Hazard
- Dip Site
- Helibase
- Helispot
- ICP
- Repeater
- Retardant/Mud Pit
- Restricted Water Source
- Division Break
- Branch Break
- Fire Perimeter
- TFR
- State Boundary
- Fire History 1980-Present