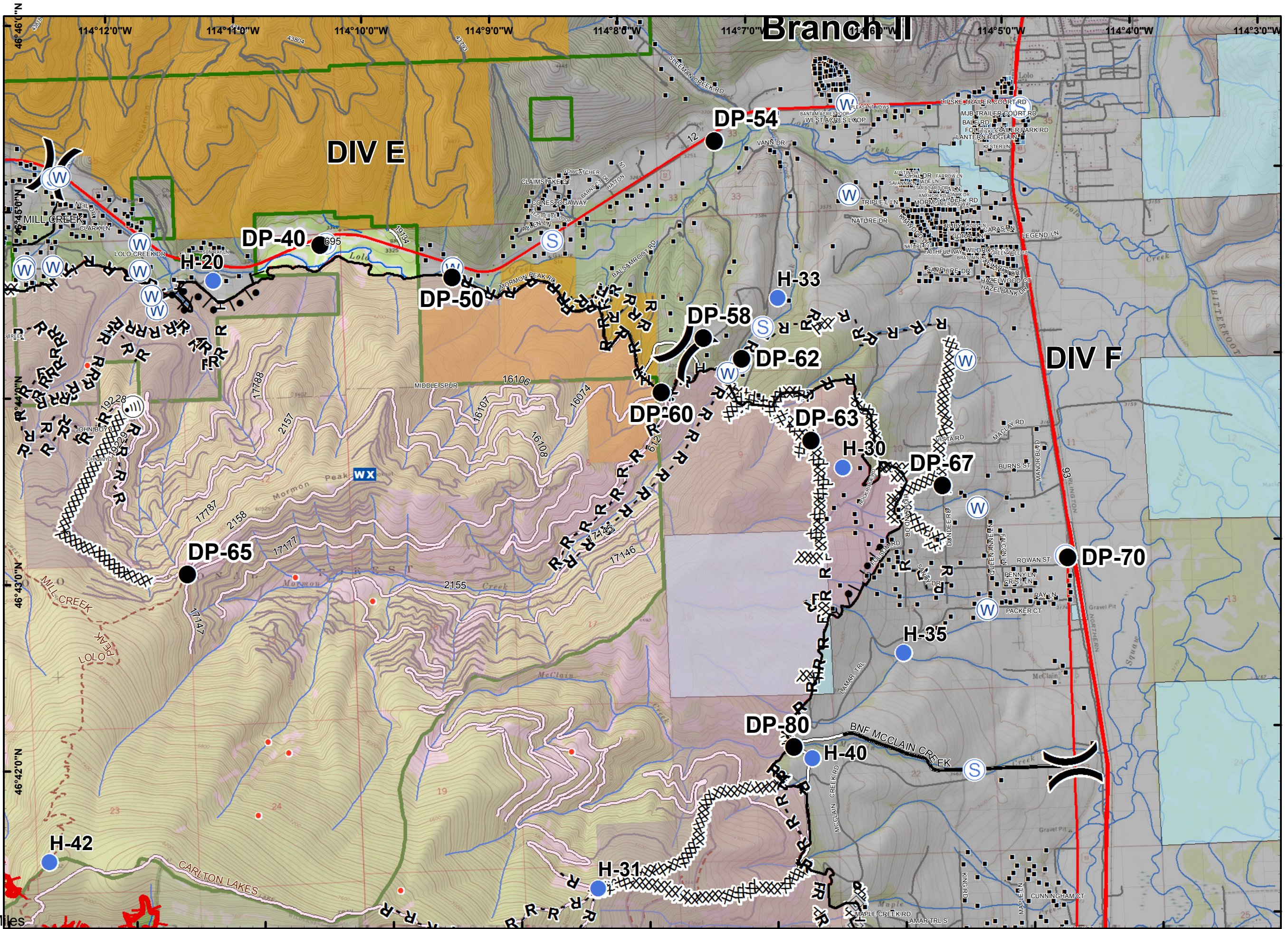


**Lolo Peak Fire**  
 MT-LNF-001288  
 IAP Map  
 Page 6 DIV E, F  
 09/18/2017

IR data from 09/17 at 2149 hrs

- IR Scattered Heat
- IR Intense Heat
- IR Scattered Heat
- IR Heat Perimeter
- ▲ Aerial Hazard
- Camp
- Dip Site
- Drop Point
- Staging Area
- Water Source
- Restricted Water Source
- Helibase
- Helispot
- ICP
- Division Break
- Branch Break
- Internet Access
- Landmark
- Lookout
- Mobile Weather Unit
- Repeater
- Retardant/Mud Pit
- Wildfire Daily Fire Perimeter
- Forest Roads
- Trails
- State Boundary
- Forest Boundaries
- Wilderness
- US Forest Service
- State of Montana
- Western Pacific Timber LLC
- Completed Dozer Line
- H- H-Completed Hand Line
- R- R-Road as Completed Line



0 0.25 0.5 1 Miles