





















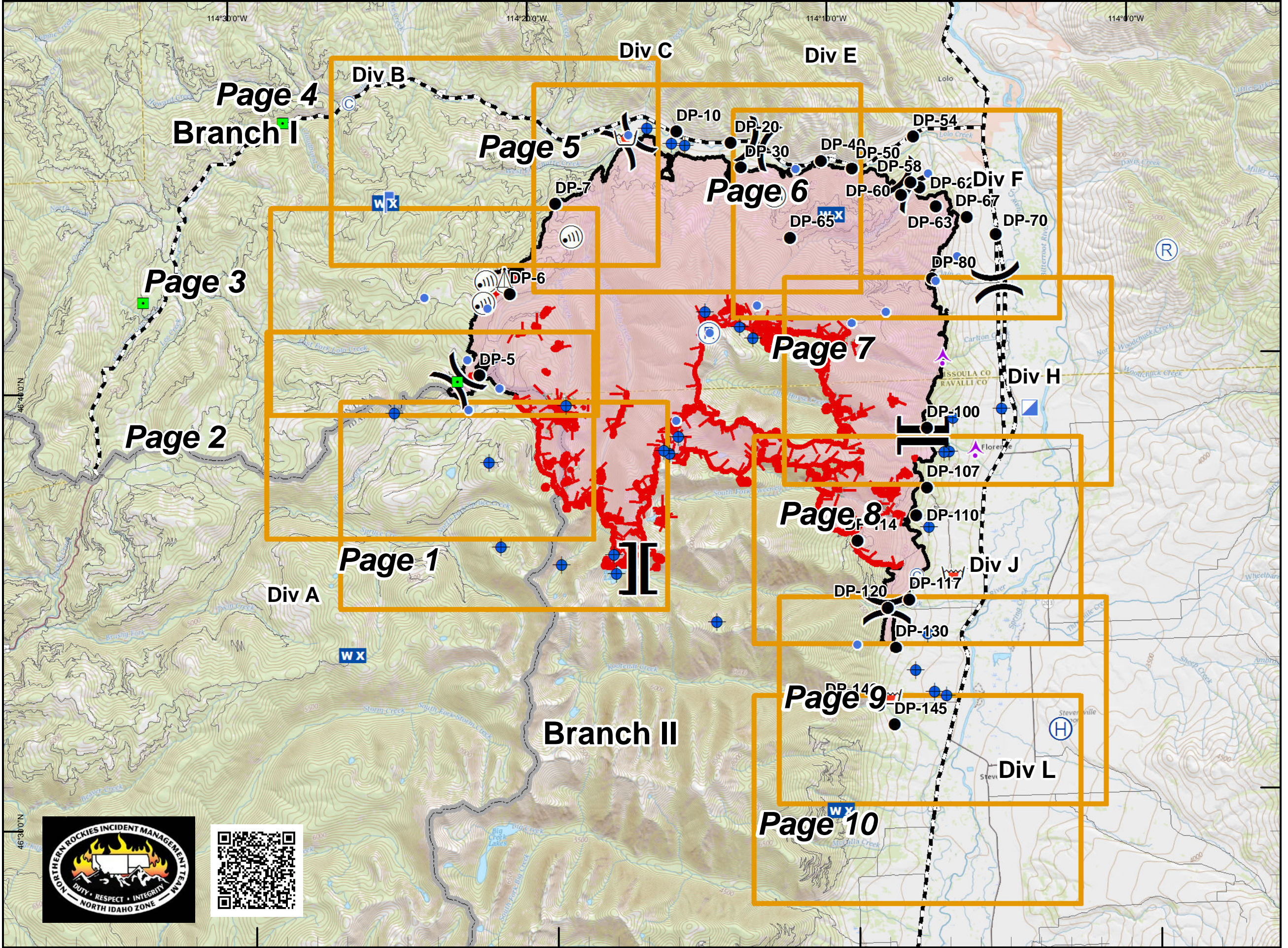


**Lolo Peak Fire  
Final  
IAP Map Day Shift  
Index Map  
MT-LNF-001288  
09/27/2017**

-  Aerial Hazard
-  Camp
-  Dip Site
-  Drop Point
-  Helibase
-  Helispot
-  ICP
-  Internet Access
-  Landmark
-  Lookout
-  Mobile Weather Unit
-  Repeater
-  Retardant/Mud Pit
-  Sling Site
-  Division Break
-  Branch Break
-  IAP Pages
-  Completed Line
-  Uncontrolled Fire Edge
-  Wildfire Daily Fire Perimeter
-  Highways
-  State Boundary



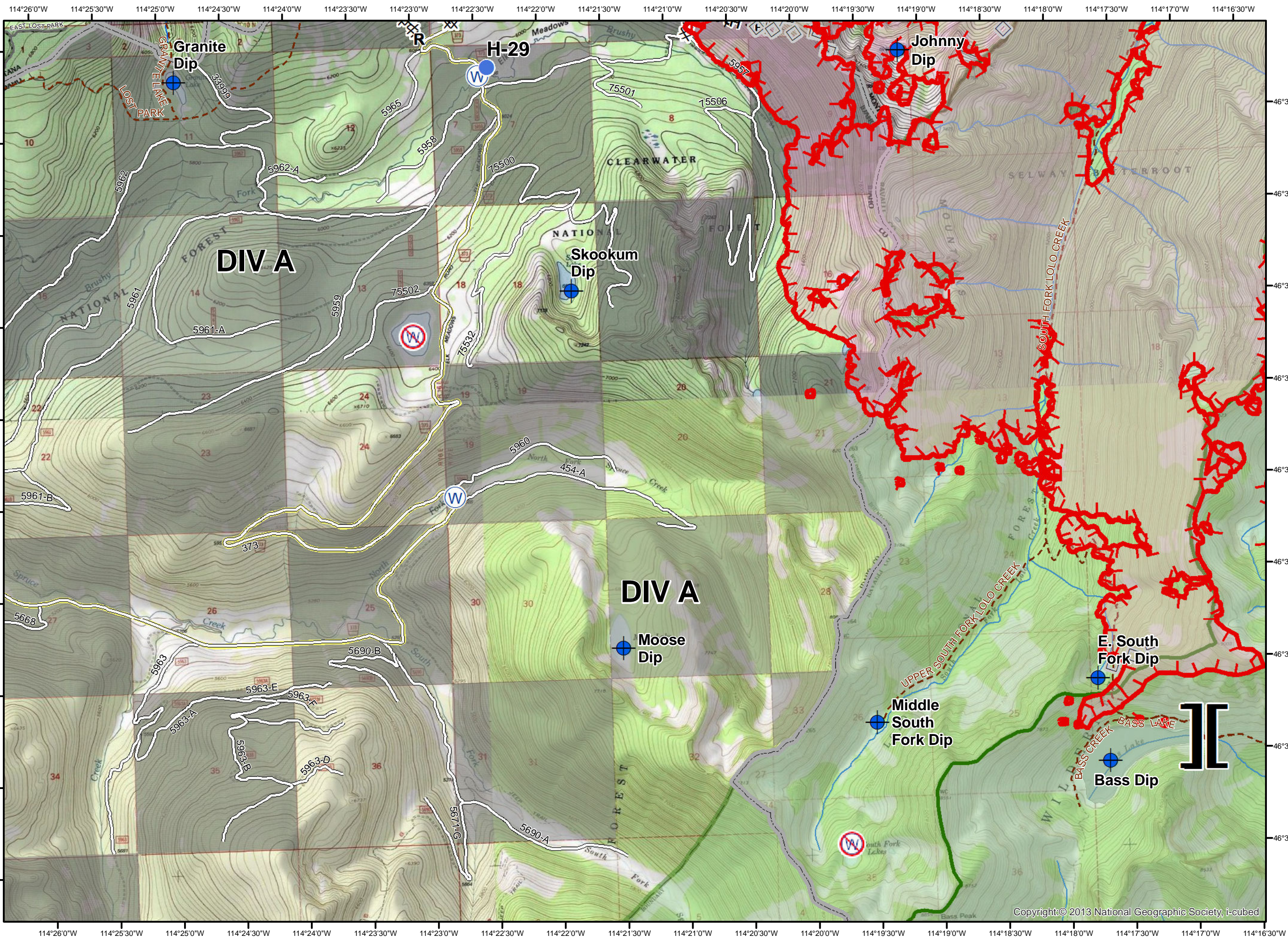
**Lolo Peak Fire**  
**Final**  
 MT-LNF-001288  
 IAP Map  
 Page 1 DIV A South  
 09/27/2017



- Dip Site
- Helispot
- Water Source
- Restricted Water Source
- Branch Break
- Completed Dozer Line
- H - H Completed Hand Line
- R - R Road as Completed Line
- Aerial Retardant Drop
- Fire Perimeter



0 0.25 0.5 1 Miles



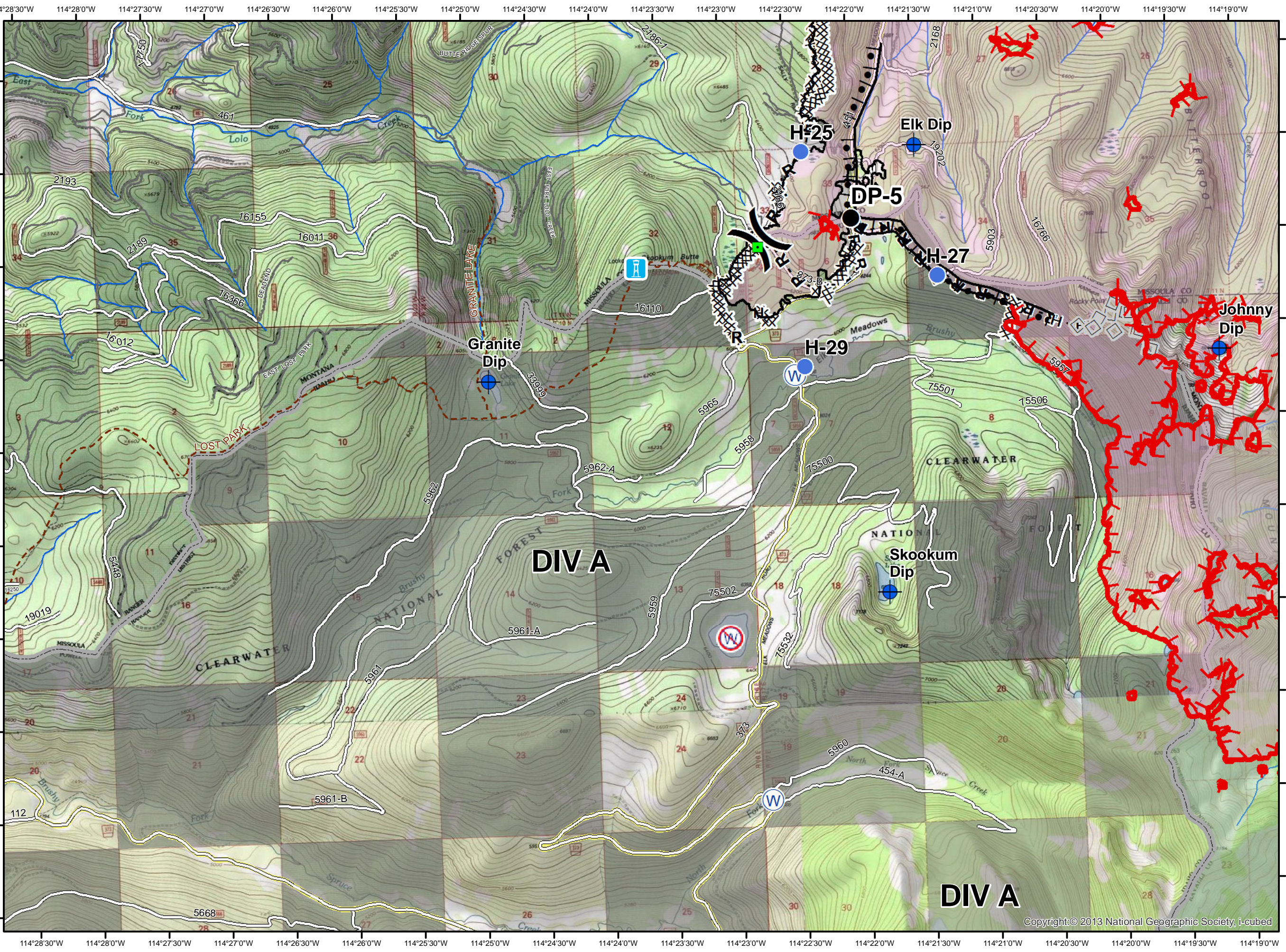
**Lolo Peak Fire**  
**Final**  
 MT-LNF-001288  
 IAP Map  
 Page 2 DIV A North  
 09/27/2017



- Dip Site
- Drop Point
- Helispot
- Landmark
- Water Source
- Restricted Water Source
- Division Break
- Completed Dozer Line
- H - H Completed Hand Line
- R - R Road as Completed Line
- Completed Burnout
- Aerial Retardant Drop
- Fire Perimeter



0 0.25 0.5 1 Miles



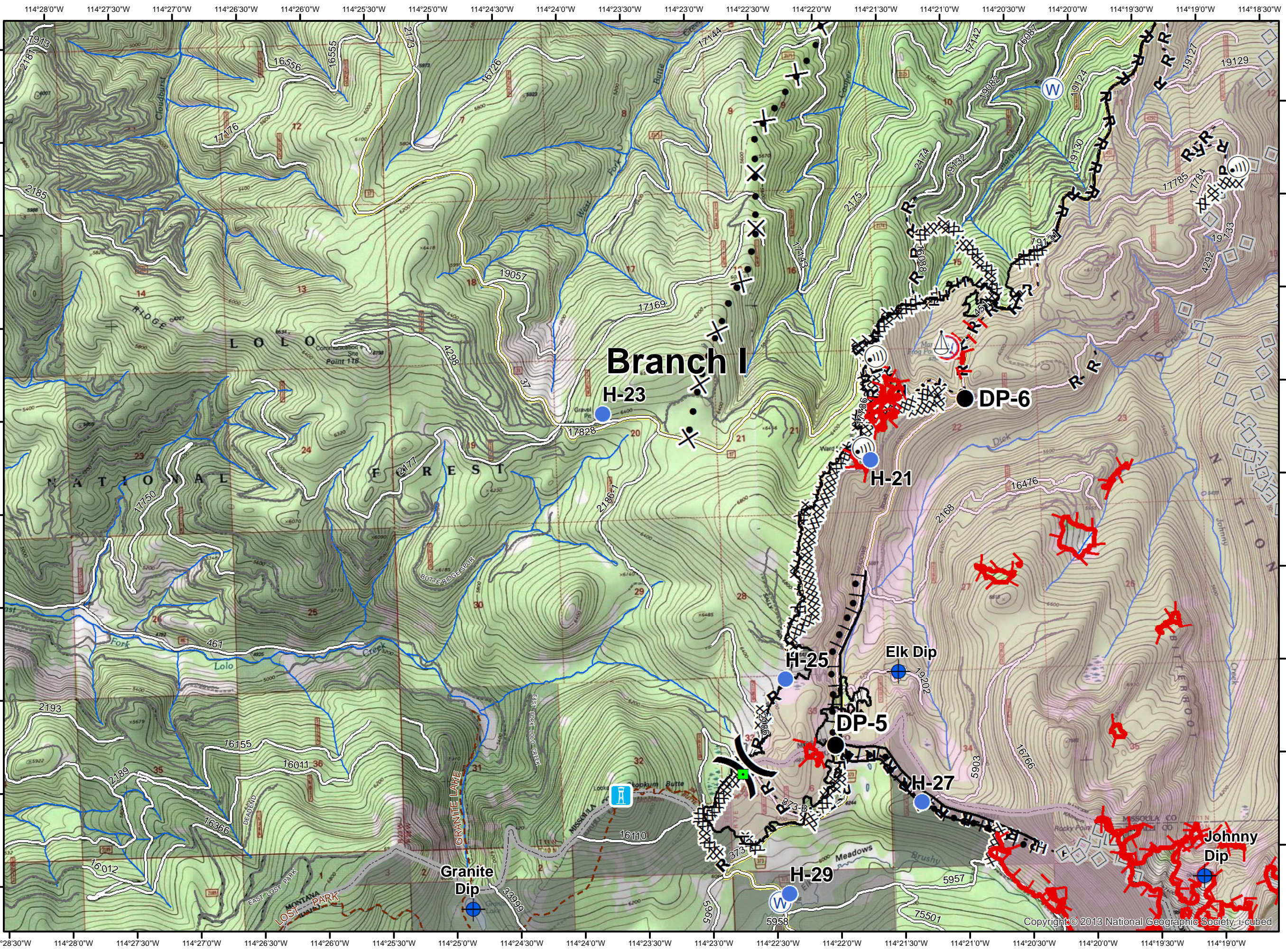
**Lolo Peak Fire**  
**Final**  
 MT-LNF-001288  
**IAP Map**  
 Page 3 DIV B South  
 09/27/2017



- Dip Site
- Drop Point
- Helispot
- Internet Access
- Landmark
- Lookout
- Sling Site
- Water Source
- Restricted Water Source
- Division Break
- Completed Dozer Line
- Completed Hand Line
- Road as Completed Line
- Completed Burnout
- Proposed Dozer Line
- Aerial Retardant Drop
- Fire Perimeter



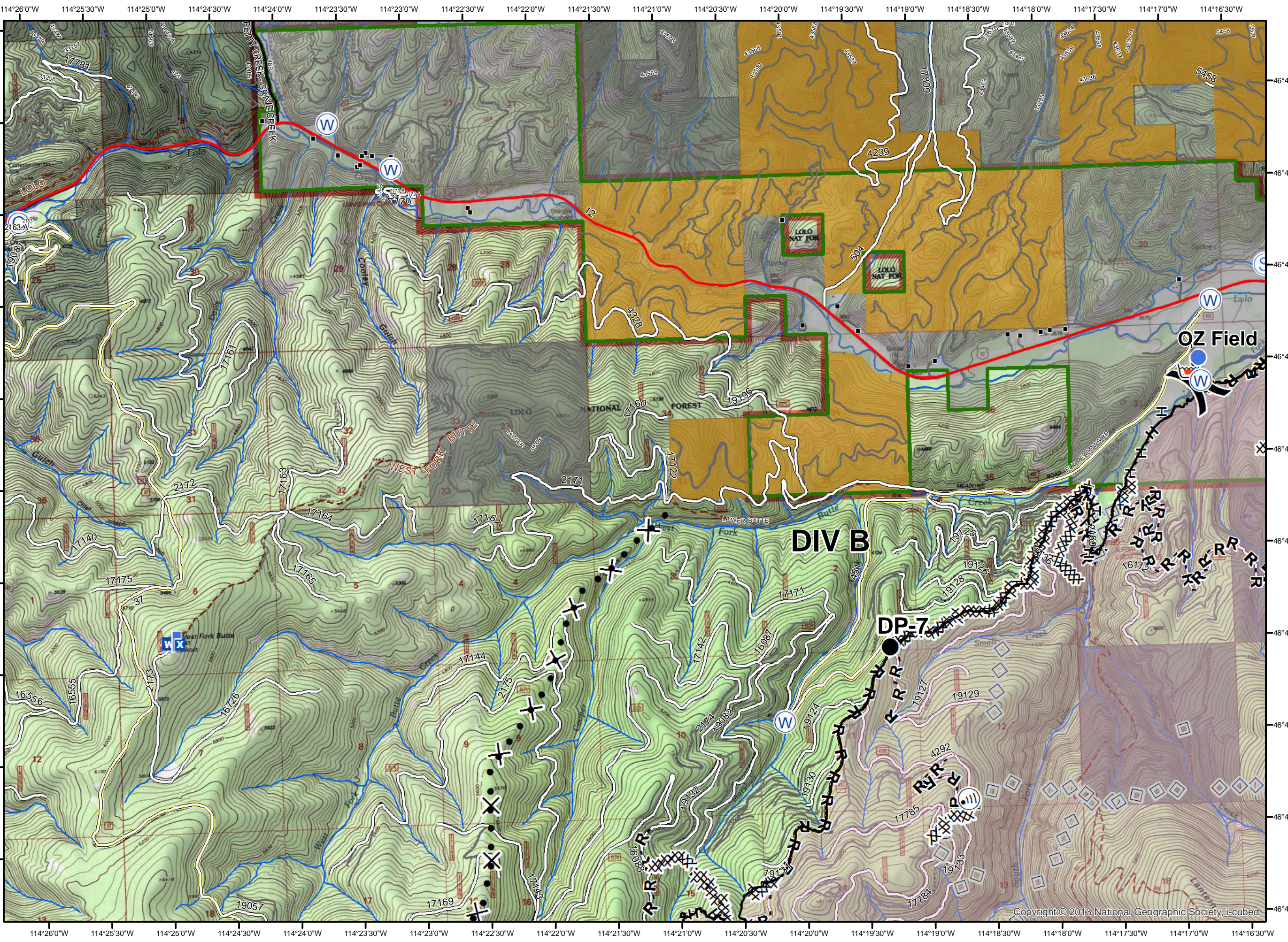
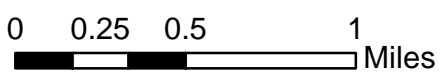
0 0.25 0.5 1 Miles



**Lolo Peak Fire**  
**Final**  
 MT-LNF-001288  
**IAP Map**  
**Page 4 DIV B North**  
**09/27/2017**



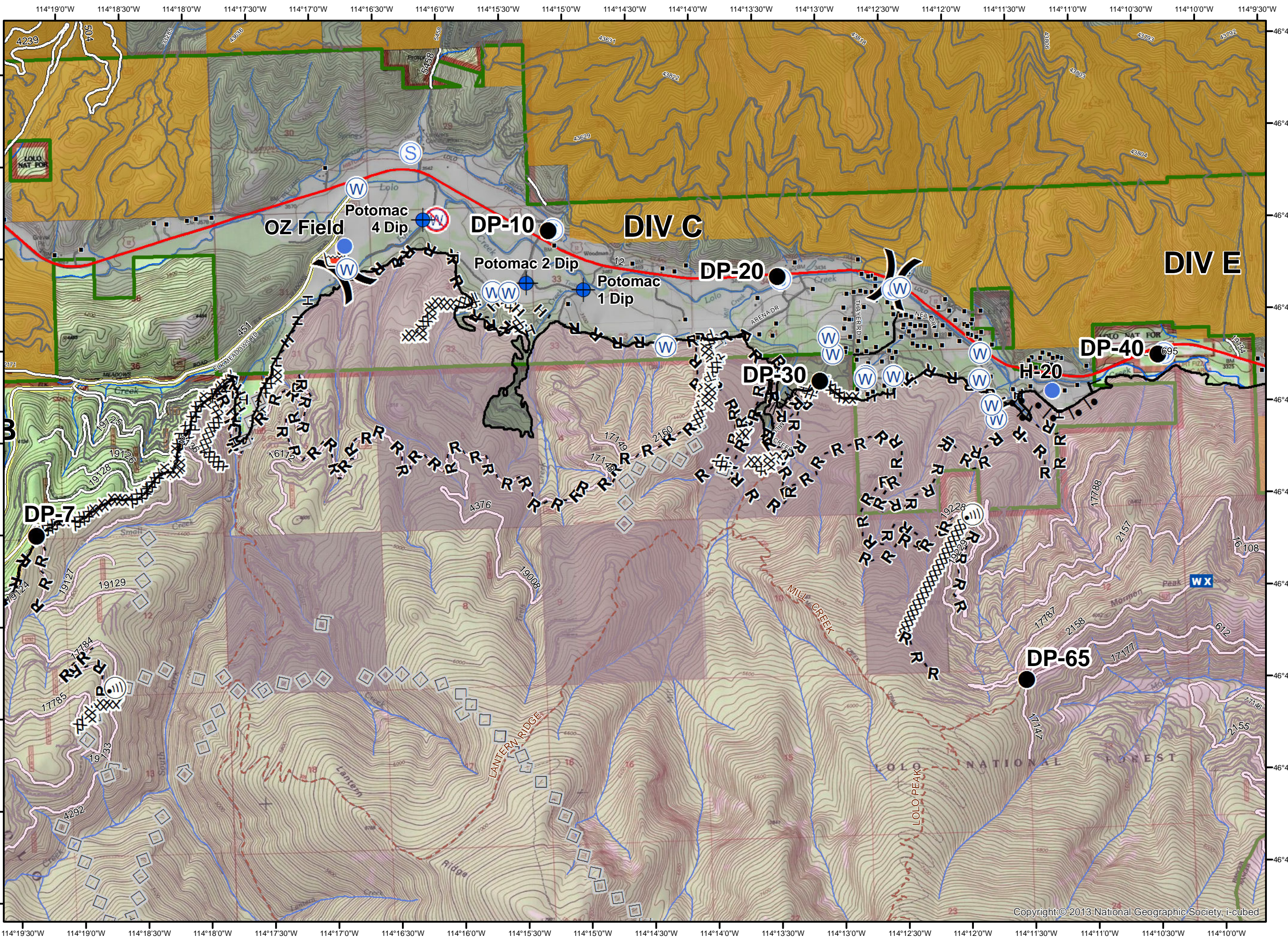
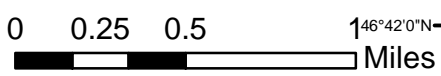
- Camp
- Dip Site
- Drop Point
- Helispot
- Internet Access
- Lookout
- Mobile Weather Unit
- Retardant/Mud Pit
- Staging Area
- Water Source
- Division Break
- Completed Dozer Line
- H - H Completed Hand Line
- R - R Road as Completed Line
- Proposed Dozer Line
- Aerial Retardant Drop
- Fire Perimeter



**Lolo Peak Fire**  
**Final**  
 MT-LNF-001288  
**IAP Map**  
 Page 5 DIV C  
 09/27/2017



- Dip Site
- Drop Point
- Helispot
- Internet Access
- Mobile Weather Unit
- Retardant/Mud Pit
- Staging Area
- Water Source
- Restricted Water Source
- Division Break
- Completed Dozer Line
- Completed Hand Line
- Road as Completed Line
- Line Break Completed
- Completed Burnout
- Aerial Retardant Drop
- Fire Perimeter

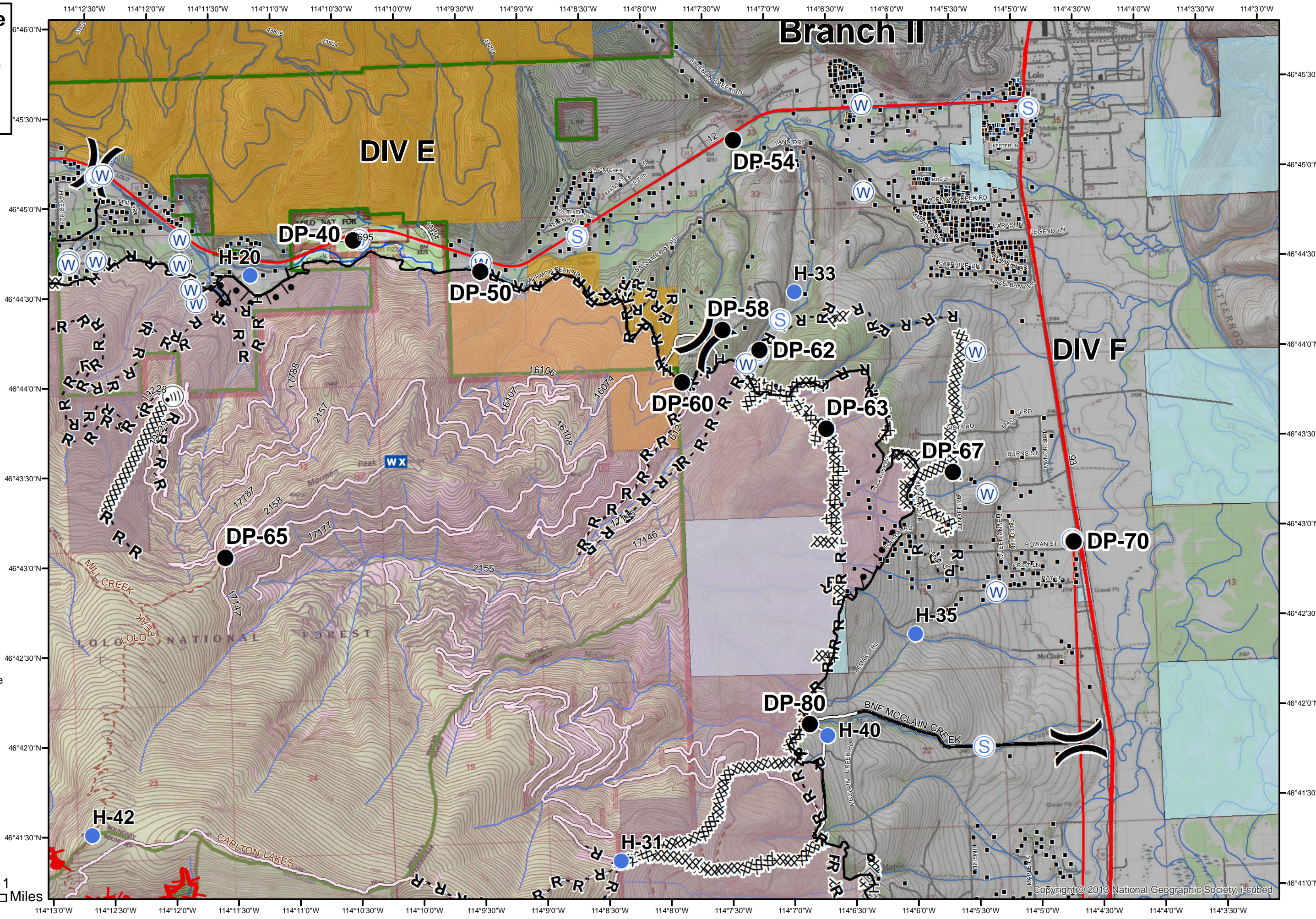




- Drop Point
- Helispot
- Internet Access
- Mobile Weather Unit
- Staging Area
- Water Source
- Division Break
- Completed Dozer Line
- H - H Completed Hand Line
- R - R Road as Completed Line
- Completed Burnout
- Aerial Retardant Drop
- Fire Perimeter












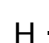








0 0.25 0.5 1 Miles



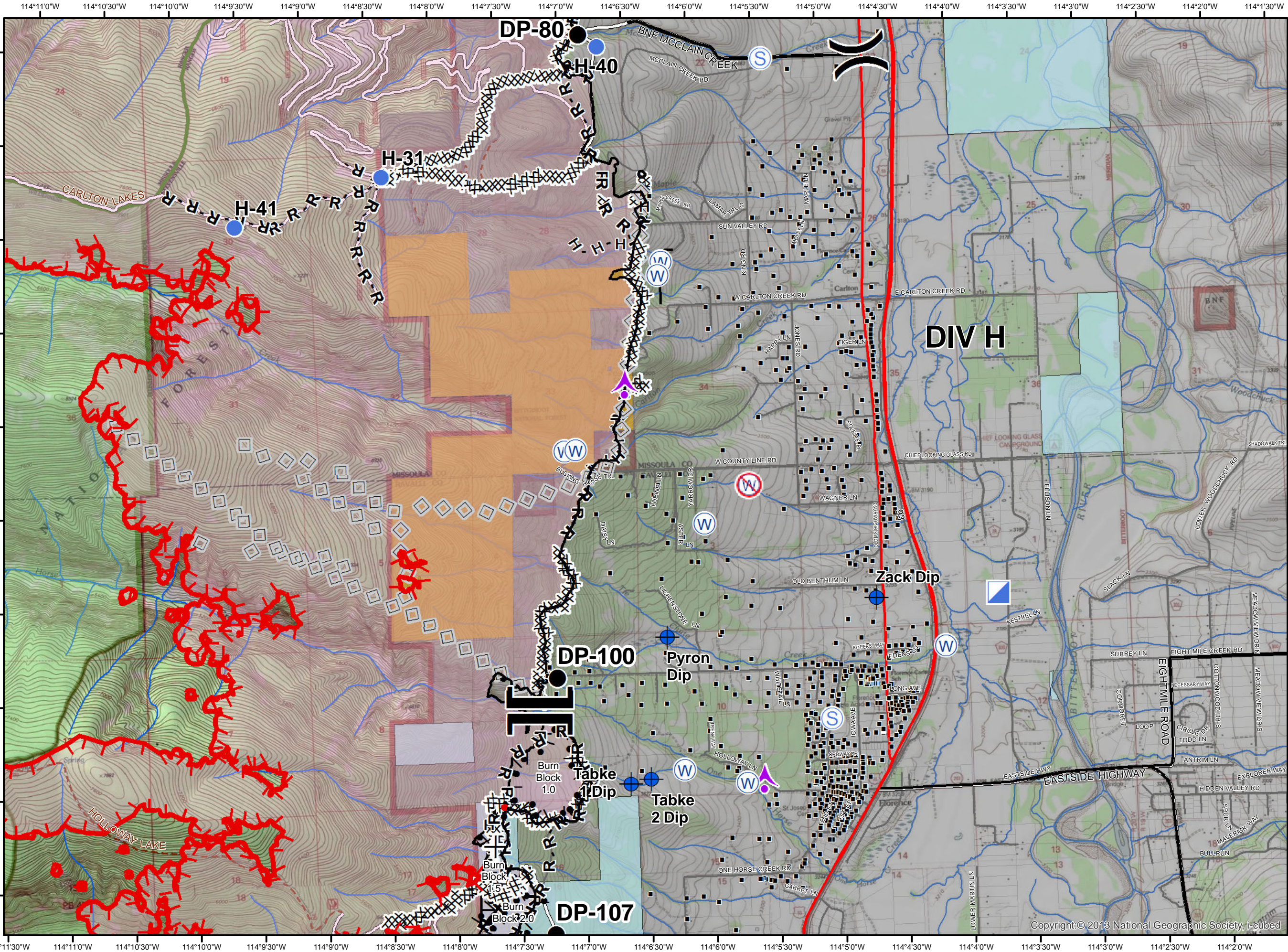
**Lolo Peak Fire**  
**Final**  
 MT-LNF-001288  
**IAP Map**  
 Page 7 Div H  
 09/27/2017



-  Aerial Hazard
-  Dip Site
-  Drop Point
-  Helispot
-  ICP
-  Staging Area
-  Water Source
-  Restricted Water Source
-  Division Break
-  Branch Break
-  Completed Dozer Line
-  Completed Hand Line
-  Road as Completed Line
-  Completed Burnout
-  Proposed Dozer Line
-  Aerial Retardant Drop
-  Highlighted Manmade Feature
-  Fire Perimeter








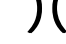
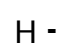



0 0.25 0.5 1 Miles





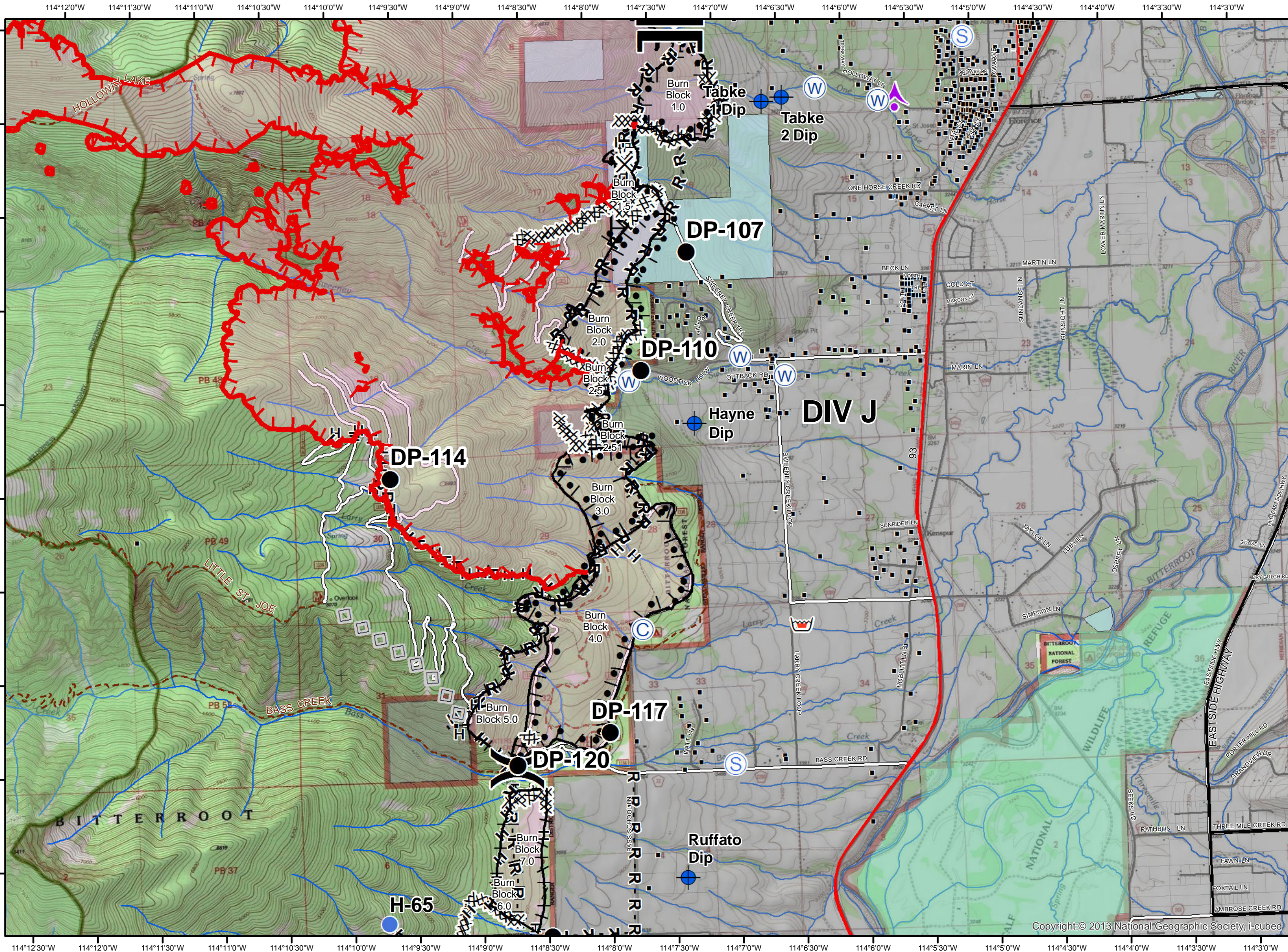
**Lolo Peak Fire**  
**Final**  
 MT-LNF-001288  
 IAP Map  
 Page 8 DIV J  
 09/27/2017



-  Aerial Hazard
-  Camp
-  Dip Site
-  Drop Point
-  Helispot
-  Retardant/Mud Pit
-  Staging Area
-  Water Source
-  Division Break
-  Branch Break
-  Completed Dozer Line
-  Completed Hand Line
-  Road as Completed Line
-  Proposed Burnout
-  Completed Burnout
-  Proposed Dozer Line
-  Aerial Retardant Drop
-  Highlighted Manmade Feature
-  Fire Perimeter



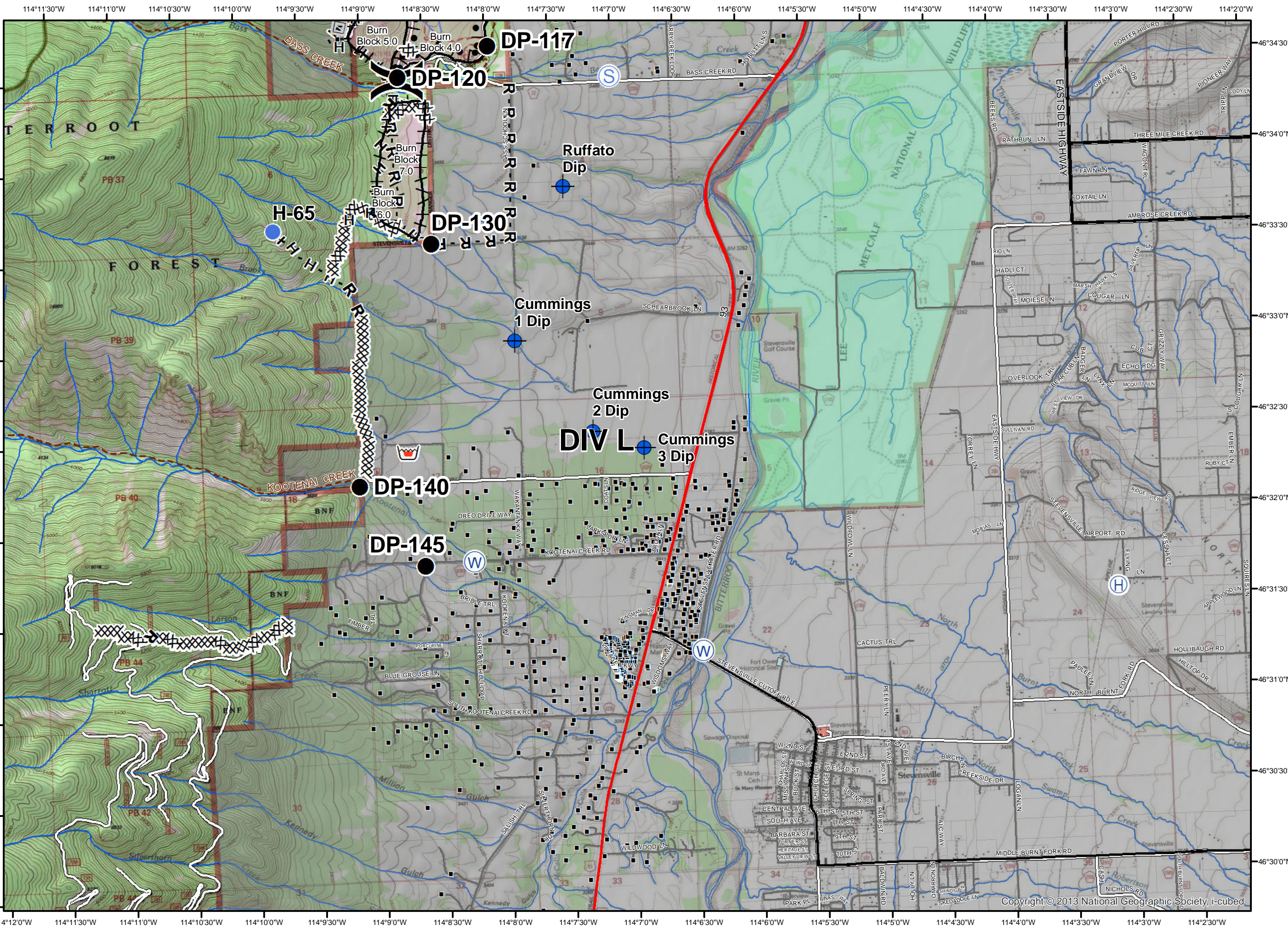
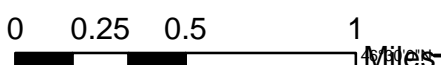
0 0.25 0.5 1 Miles



**Lolo Peak Fire**  
**Final**  
 MT-LNF-001288  
**IAP Map**  
 Page 9 DIV L North  
 09/27/2017




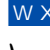




- Dip Site
- Drop Point
- Helibase
- Helispot
- Retardant/Mud Pit
- Staging Area
- Water Source
- Division Break
- Completed Dozer Line
- Completed Hand Line
- Road as Completed Line
- Proposed Burnout
- Completed Burnout
- Aerial Retardant Drop
- Fire Perimeter



**Lolo Peak Fire**  
**Final**  
 MT-LNF-001288  
**IAP Map**  
**Page10 DIV L South**  
 09/27/2017



-  Dip Site
-  Drop Point
-  Helibase
-  Mobile Weather Unit
-  Retardant/Mud Pit
-  Water Source

XXXXXX Completed Dozer Line

R - R Road as Completed Line



0 0.25 0.5 1 Miles

