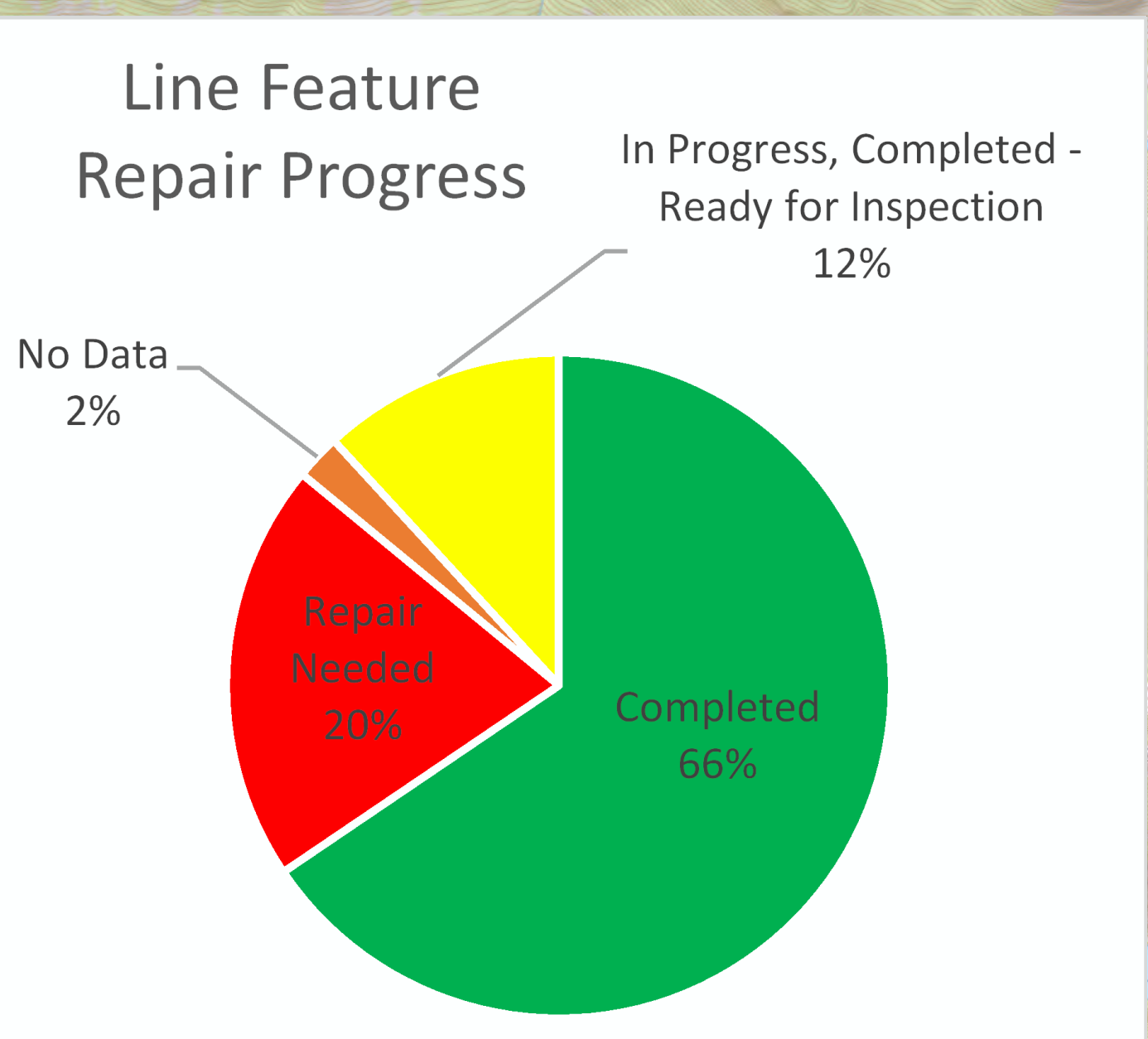
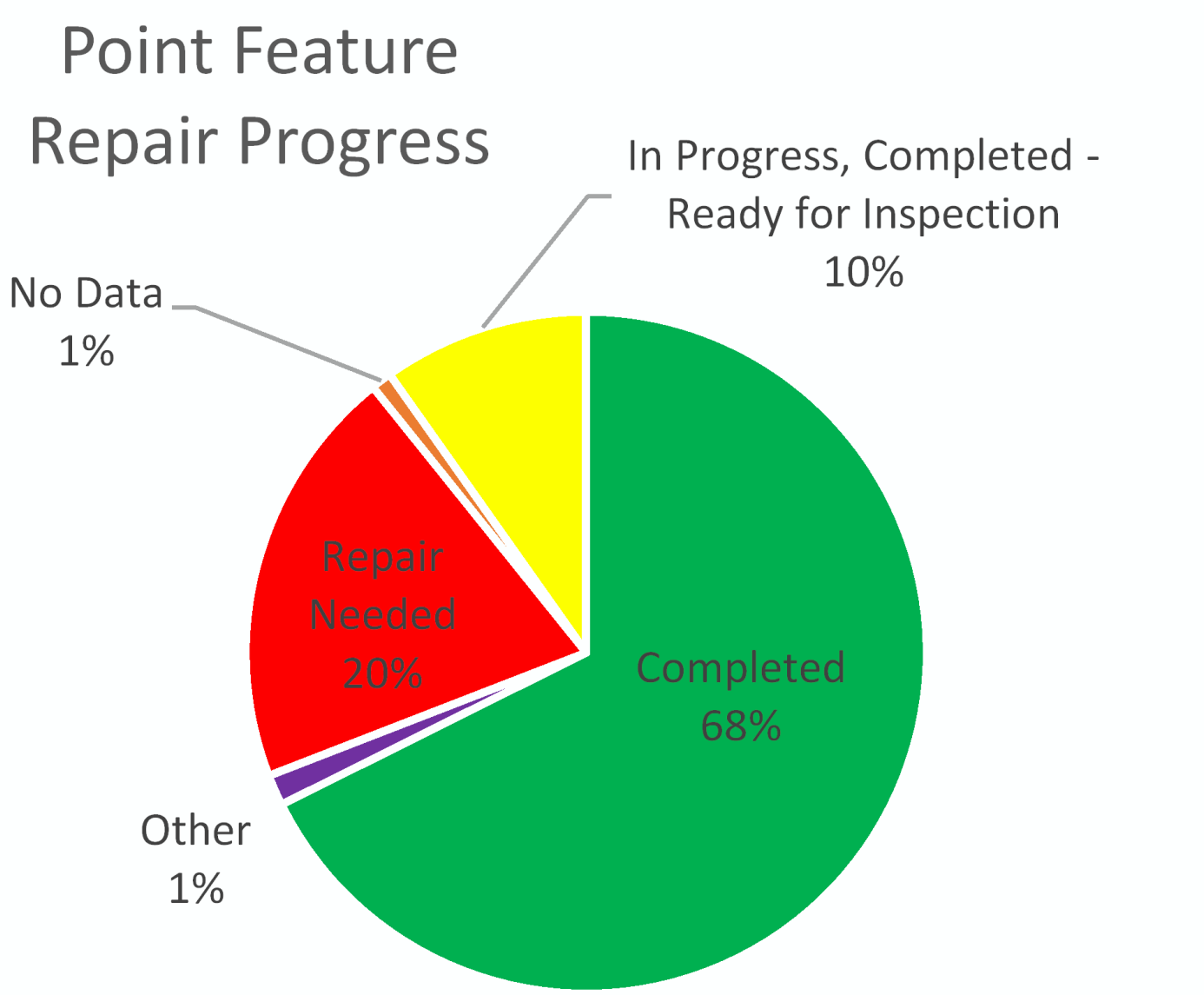
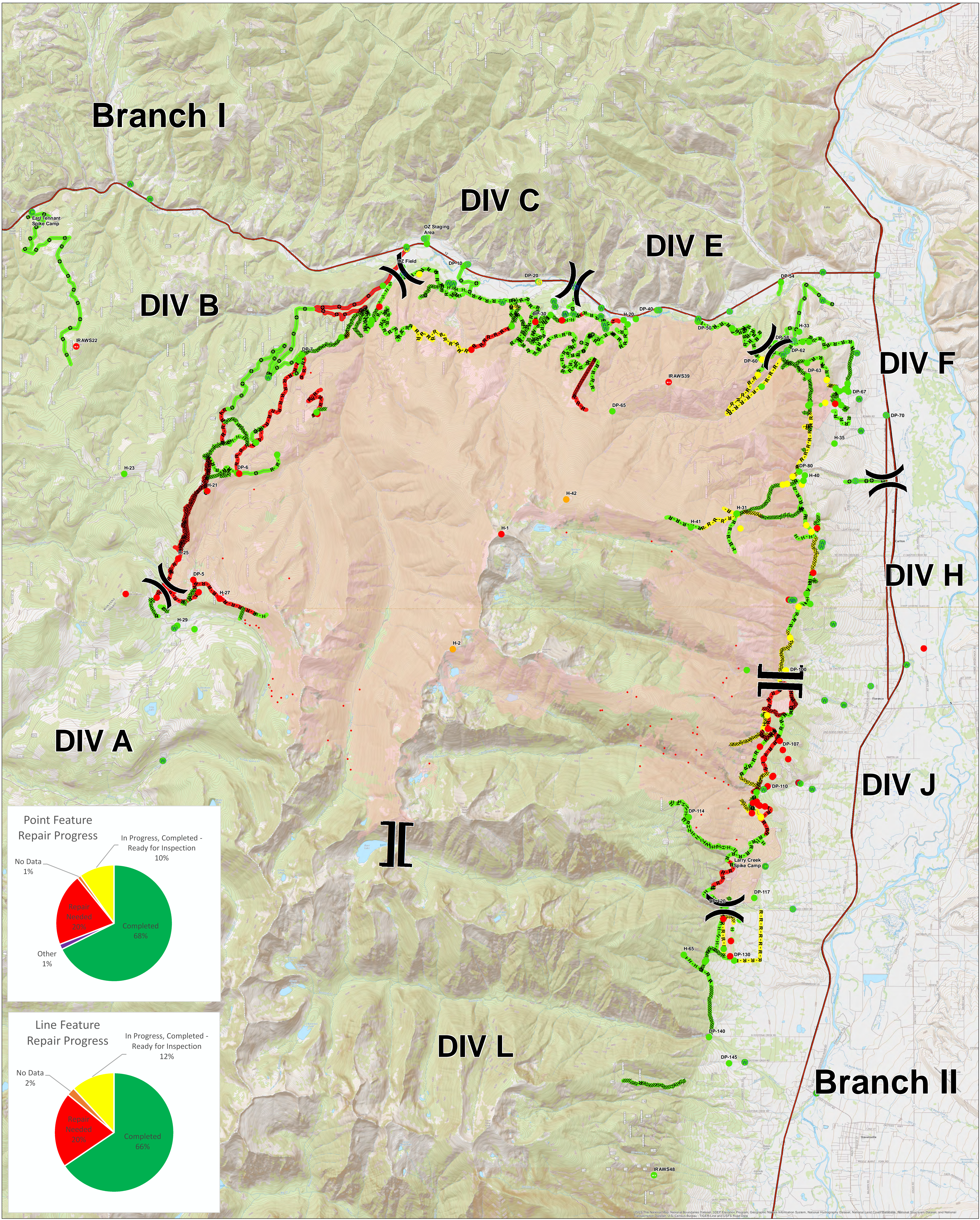
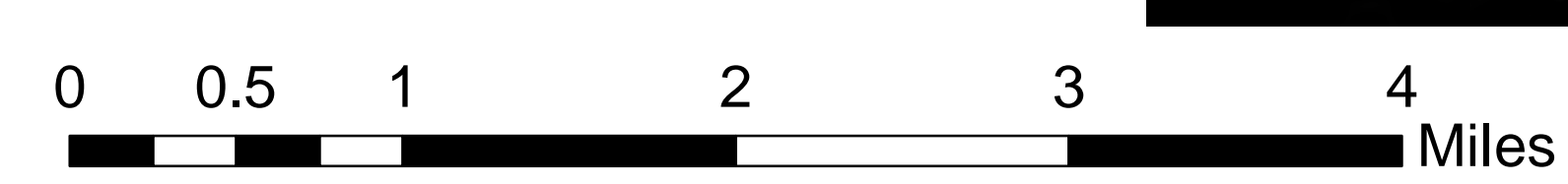
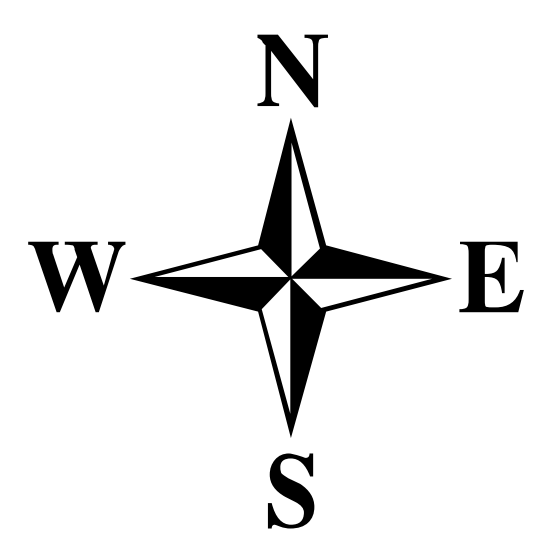


# Branch I



**Lolo Peak Fire  
Suppression Repair**  
 MT-LNF-001288  
 September 27, 2017  
 53,902 acres  
 IR perimeter as of  
 9/24/2017 @ 0200 hrs

- |   |   |                                |
|---|---|--------------------------------|
| <b>Point Repair Status</b>                      | <b>Line Repair Status</b>                       | <b>Other</b>                   |
| ● Repair Needed                                 | — Repair Needed                                 | ○ Camp                         |
| ● In Progress, Completed - Ready for Inspection | — In Progress, Completed - Ready for Inspection | ○ Staging Area                 |
| ● Completed - Inspected / No Repair Needed      | — Completed - Inspected / No Repair Needed      | ○ Water Source                 |
| ● No Data                                       | — No Data                                       | ○ Division Break               |
|   |   | ○ Branch Break                 |
|   |   | ○ IR Isolated Heat             |
|   |   | ○ IR Scattered Heat            |
|   |   | ○ IR Heat Perimeter            |
|   |   | ○ R-R-R Road as Completed Line |
|   |   | ○ W-W-W-W Line Break Completed |
|   |   | ○ Other                        |



USGS The National Map, National Boundaries Dataset, ISEP Elevation Program, Geographic Names Information System, National Hydrography Dataset, National Land Cover Database, National Structures Dataset and National Transportation Dataset (U.S. Census Bureau), TIGER/Line and USFS Road Data