



Lolo Peak Fire

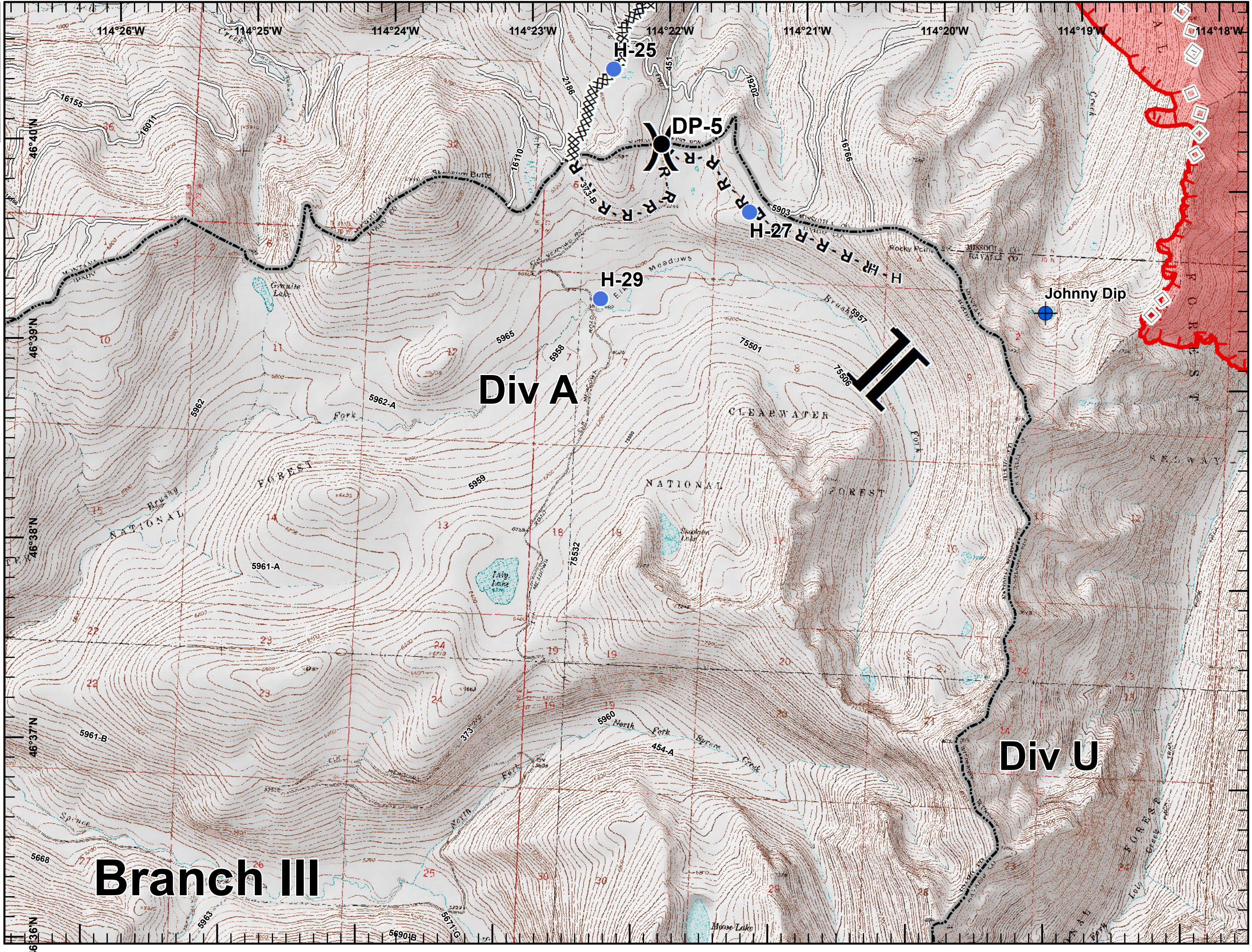
MT-LNF-001288

IAP Map

Page 1, Div A

8/16/2017

10,363 acres, MMA Perimeter as of 8/14/2017 @ 1500



- Dip Site
- Drop Point
- Helispot
- Division Break
- Branch Break
- Completed Dozer Line
- H - H Completed Hand Line
- R - R Road as Completed Line
- Aerial Retardant Drop
- Uncontrolled Fire Edge
- Roads
- State Boundary
- Wildfire Daily Fire Perimeter

