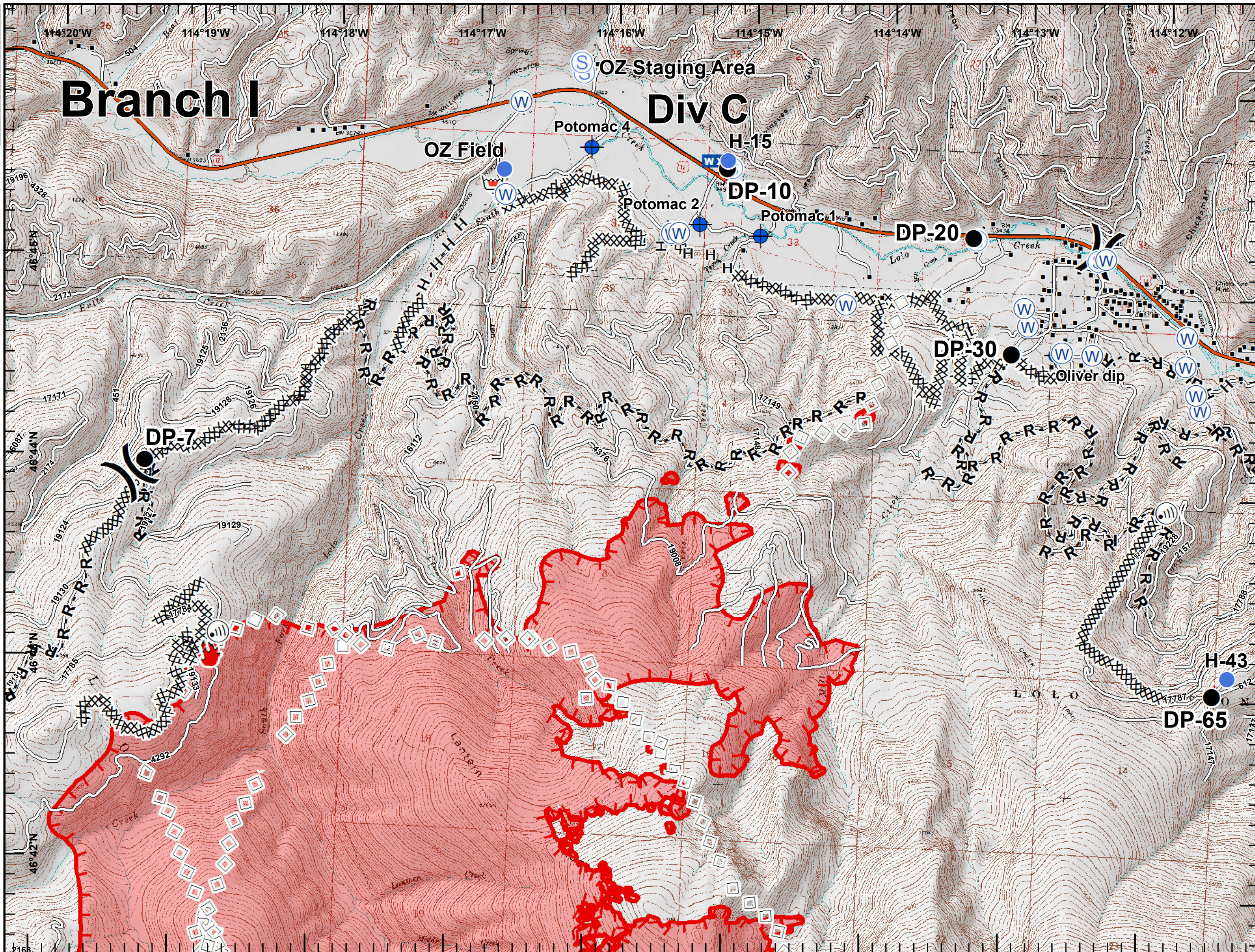




**Lolo Peak Fire**  
 MT-LNF-001288  
 IAP Map  
 Page 3, Div C  
 8/16/2017

10,363 acres, MMA Perimeter  
 as of 8/14/2017 @ 1500



- Dip Site
- Drop Point
- Fire Location
- Helispot
- Internet Access
- Mobile Weather Unit
- Retardant/Mud Pit
- Staging Area
- Water Source
- Division Break
- Structures
- MT\_Structures
- Completed Dozer Line
- H - HCompleted Hand Line
- R - RRoad as Completed Line
- Aerial Retardant Drop
- Uncontrolled Fire Edge
- Interstate and Highways
- Roads
- State Boundary
- Wildfire Daily Fire Perimeter

