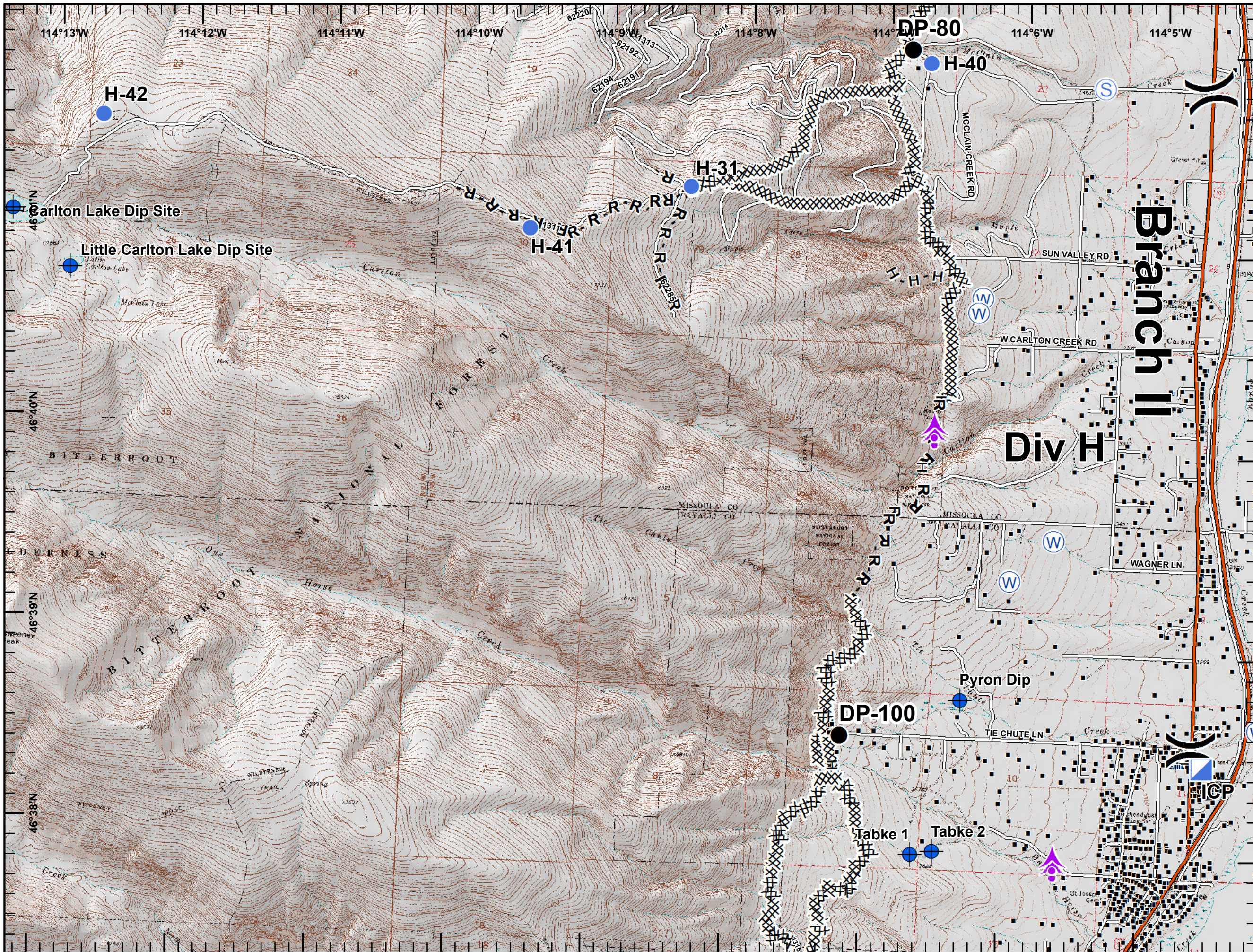




**Lolo Peak Fire**  
 MT-LNF-001288  
**IAP Map**  
 Page 6, Div H  
 8/16/2017

10,363 acres, MMA Perimeter  
 as of 8/14/2017 @ 1500



Aerial Hazard

Dip Site

Drop Point

Helispot

ICP

Staging Area

Water Source

Division Break

Structures

MT\_Structures

Completed Dozer Line

Completed Hand Line

Road as Completed Line

Interstate and Highways

Roads

State Boundary

