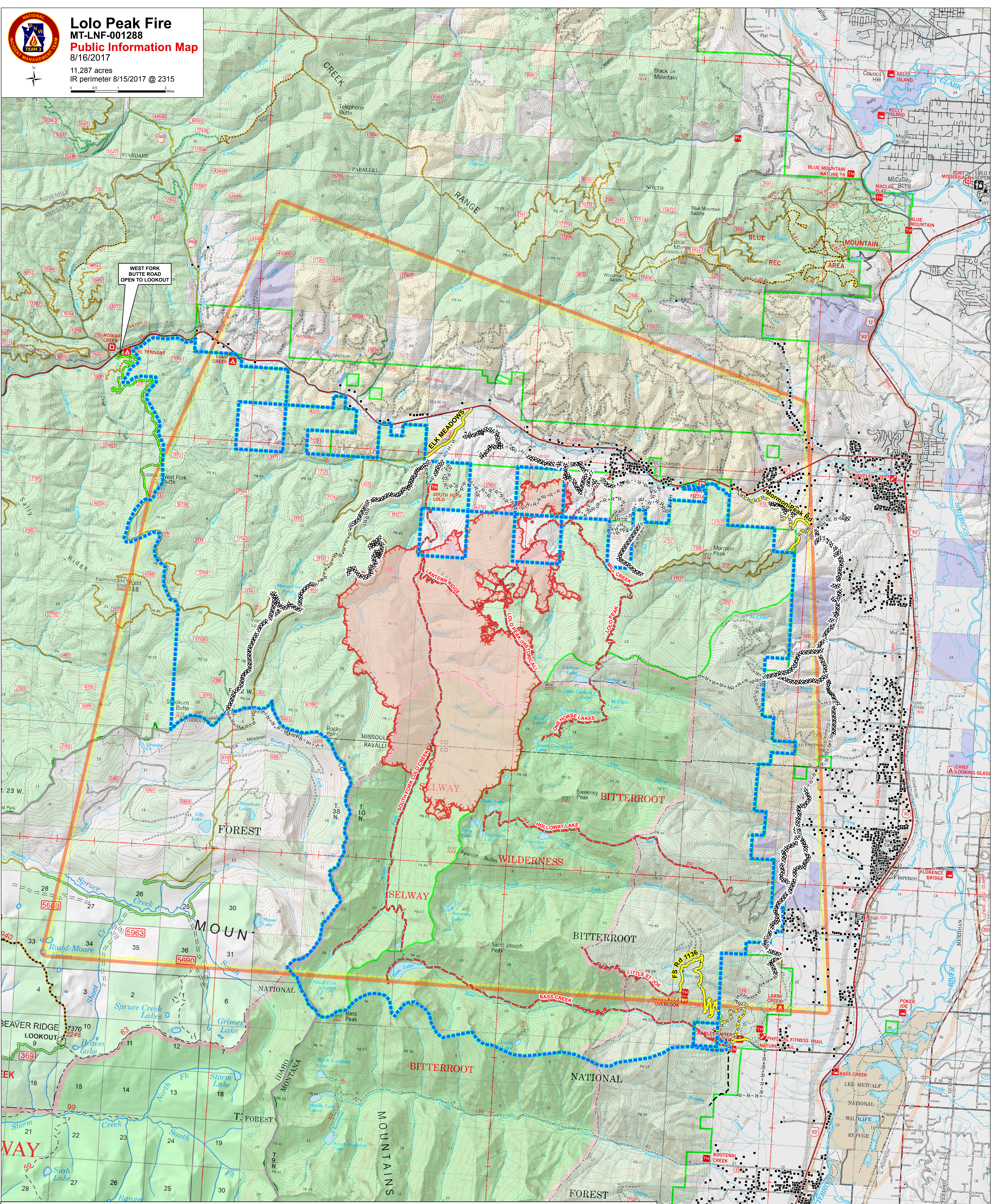




Lolo Peak Fire MT-LNF-001288 Public Information Map

8/16/2017
11,287 acres
IR perimeter 8/15/2017 @ 2315



WEST FORK BUTTE ROAD OPEN TO LOOKOUT

• Structures	XXXXXXXXX Completed Dozer Line	▭ Closure Area	▭ Temporary Flight Restriction - Includes Unmanned Aerial Vehicles (Drones)
— West Fork Butte Rd - Open to Lookout	- - - - - Completed Hand Line	▭ State Boundary	▭ Fire Perimeter
— Road Closure	- R - R - R Road as Completed Line	▭ Planned Fire Line	▭ Uncontrolled Fire Edge
— Trail Closures			

Stevensville