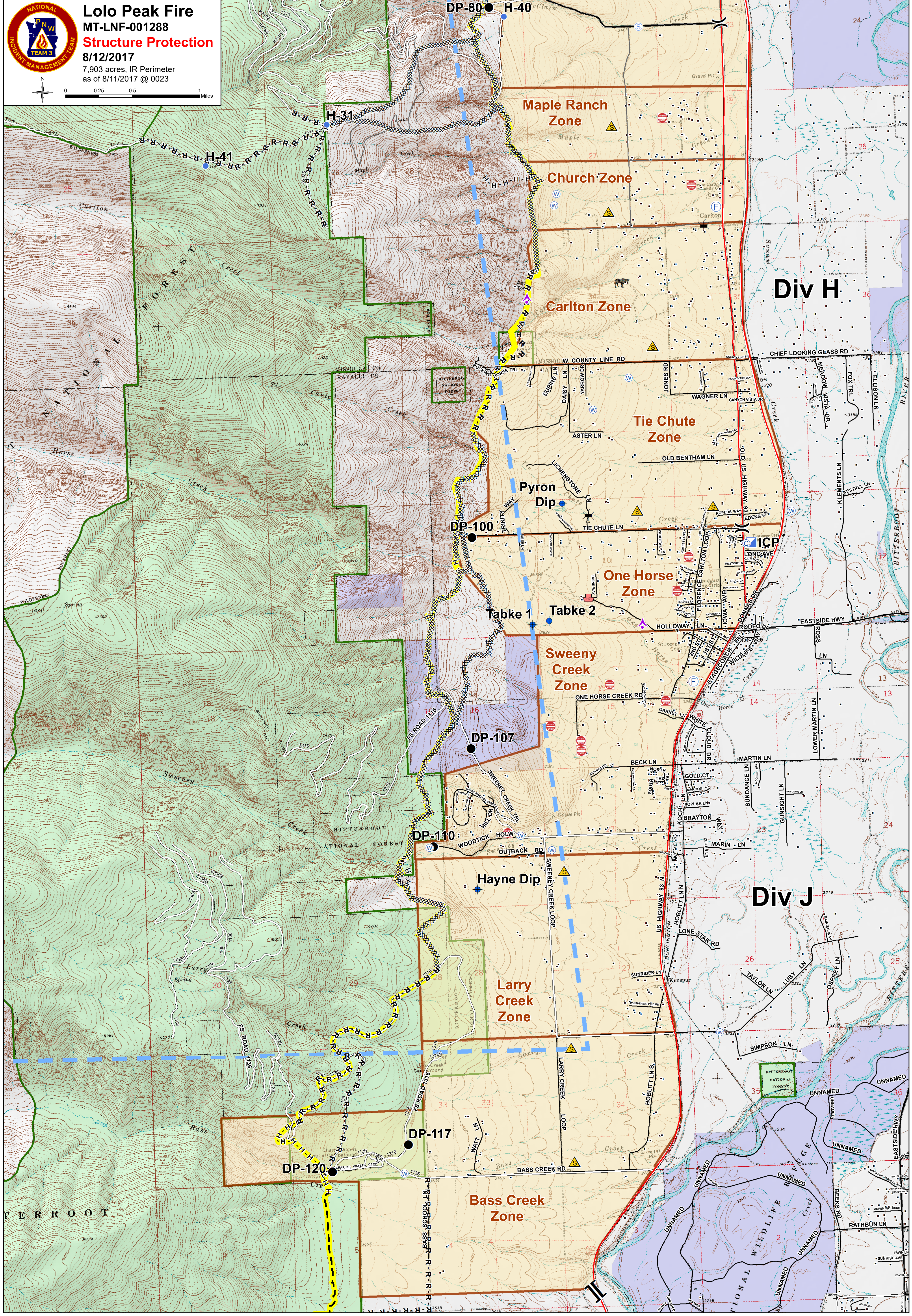
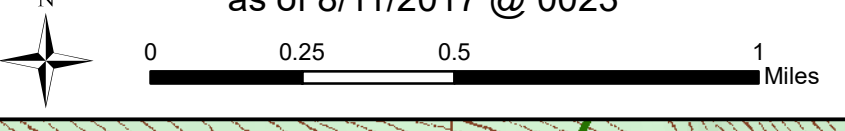




Lolo Peak Fire
 MT-LNF-001288
Structure Protection
 8/12/2017
 7,903 acres, IR Perimeter
 as of 8/11/2017 @ 0023



- | | | | | | | | | | | | | | |
|--|-------------------------------|--|----------------------|--|----------------------------------|--|------------------|--|-------------------|--|------------|--|----------------|
| | Dangerous: Threatening People | | Zoo | | R - R - R Road as Completed Line | | Structures | | State | | Dip Site | | Staging Area |
| | FD Emergency Staging | | Bridge | | Planned Fire Line | | Primary Line | | US Forest Service | | Drop Point | | Water Source |
| | Junk Yard Hazards | | Completed Dozer Line | | TFR | | Evacuation_Zones | | Aerial Hazard | | Hotspot | | Division Break |
| | Safety Zone | | Completed Hand Line | | Structure Assessment | | Evacuation_Zones | | Camp | | ICP | | Branch Break |