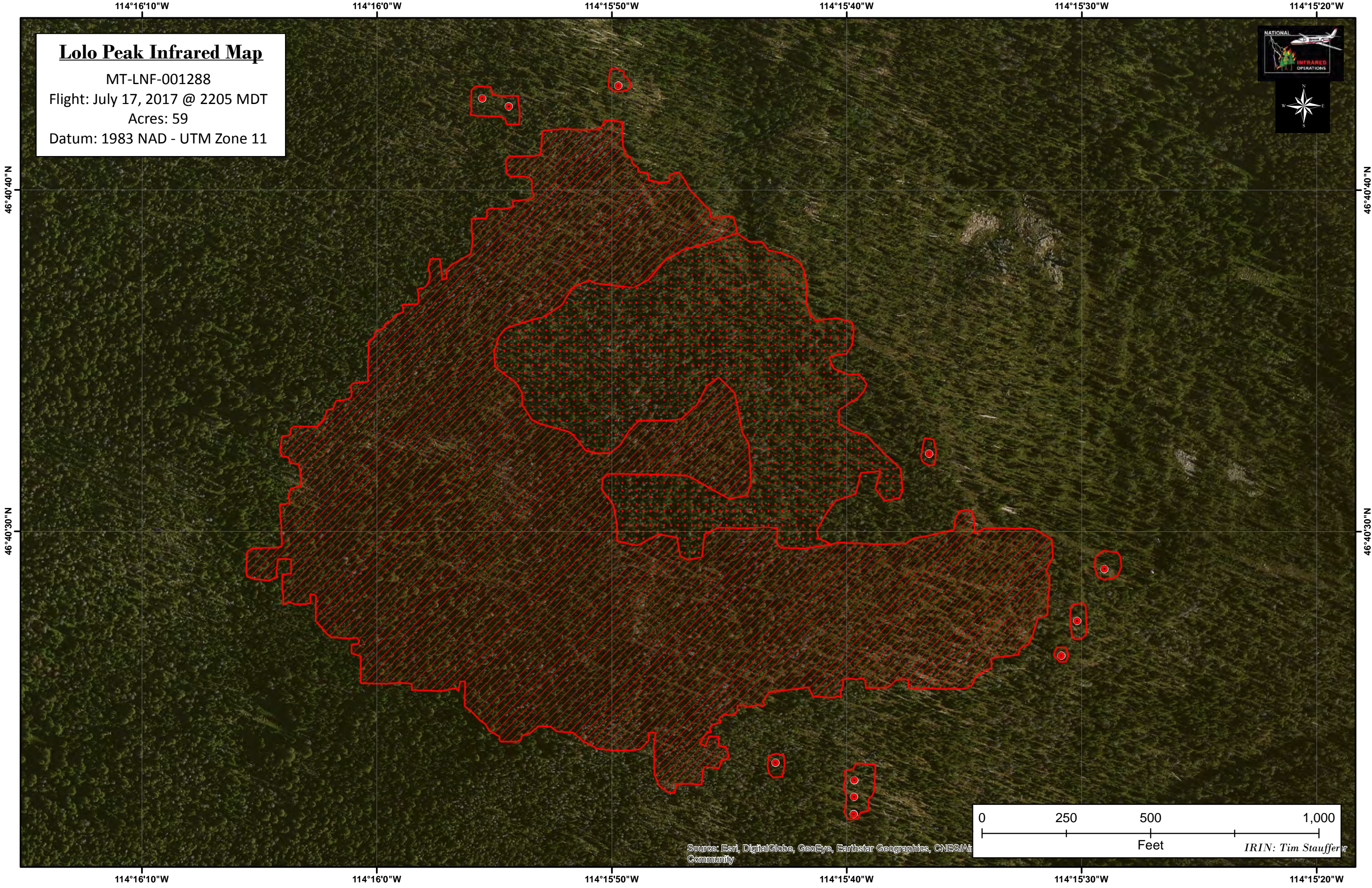




Lolo Peak Infrared Map
MT-LNF-001288
Flight: July 17, 2017 @ 2205 MDT
Acres: 59
Datum: 1983 NAD - UTM Zone 11



46°40'40"N

46°40'30"N

46°40'40"N

46°40'30"N

114°16'10"W

114°16'0"W

114°15'50"W

114°15'40"W

114°15'30"W

114°15'20"W

114°16'10"W

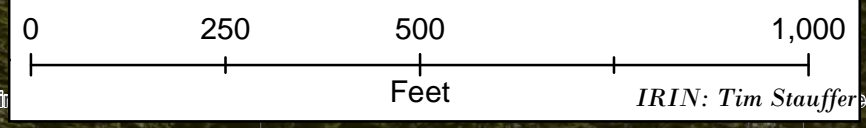
114°16'0"W

114°15'50"W

114°15'40"W

114°15'30"W

114°15'20"W



Source: Esri, DigitalGlobe, GeoEye, Earthstar Geographics, CNES/Air
Community

IRIN: Tim Stauffer