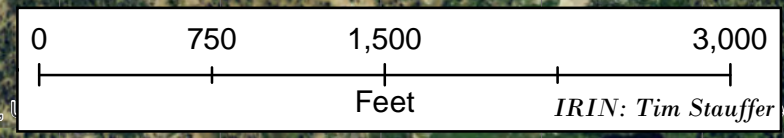
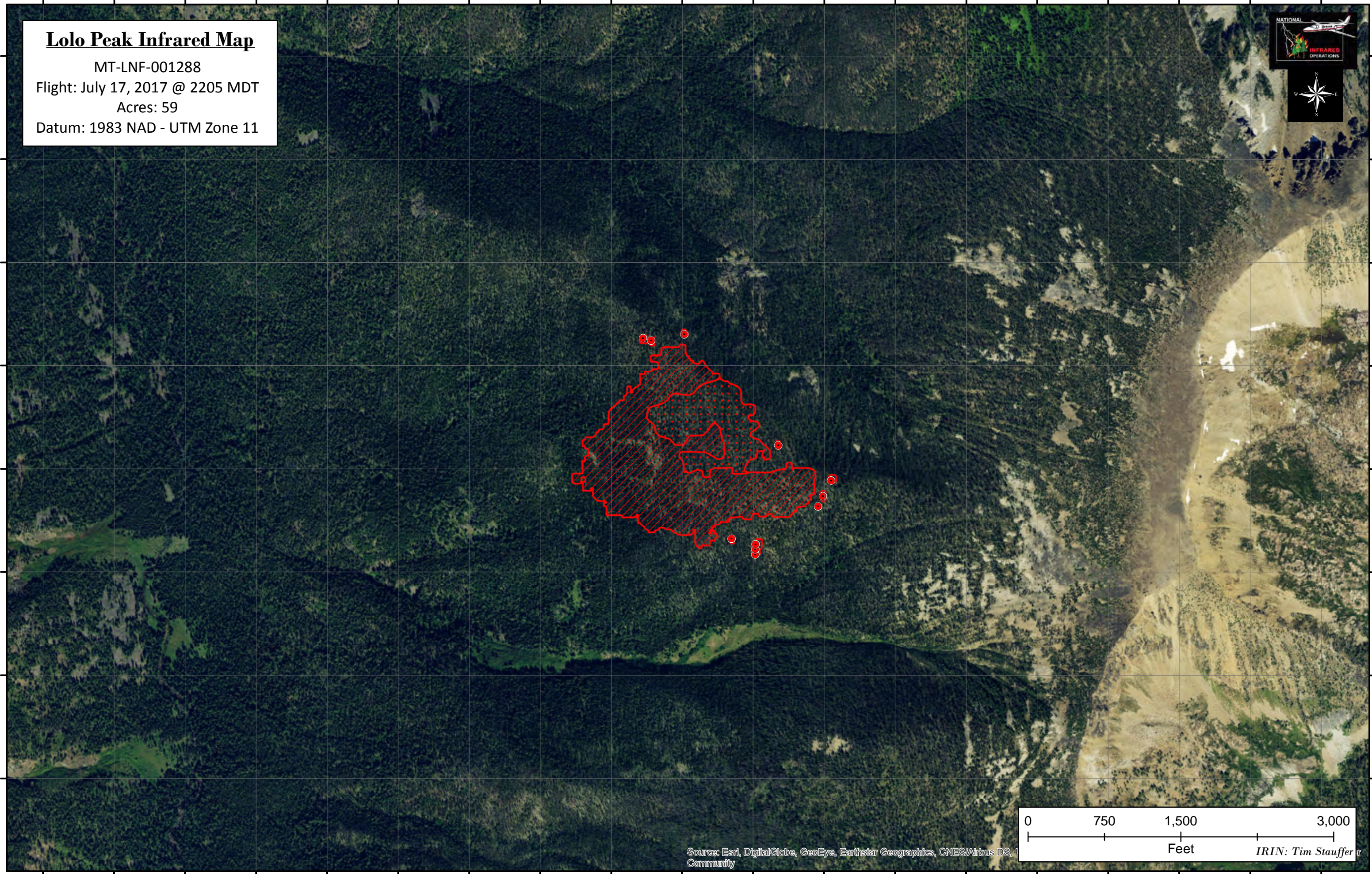


114°17'20"W 114°17'10"W 114°17'0"W 114°16'50"W 114°16'40"W 114°16'30"W 114°16'20"W 114°16'10"W 114°16'0"W 114°15'50"W 114°15'40"W 114°15'30"W 114°15'20"W 114°15'10"W 114°15'0"W 114°14'50"W 114°14'40"W 114°14'30"W 114°14'20"W

**Lolo Peak Infrared Map**  
MT-LNF-001288  
Flight: July 17, 2017 @ 2205 MDT  
Acres: 59  
Datum: 1983 NAD - UTM Zone 11



Source: Esri, DigitalGlobe, GeoEye, Earthstar Geographics, CNES/Airbus DS, Community  
IRIN: Tim Stauffer

114°17'20"W 114°17'10"W 114°17'0"W 114°16'50"W 114°16'40"W 114°16'30"W 114°16'20"W 114°16'10"W 114°16'0"W 114°15'50"W 114°15'40"W 114°15'30"W 114°15'20"W 114°15'10"W 114°15'0"W 114°14'50"W 114°14'40"W 114°14'30"W 114°14'20"W