

114°16'30"W 114°16'20"W 114°16'10"W 114°16'0"W 114°15'50"W 114°15'40"W 114°15'30"W 114°15'20"W 114°15'10"W 114°15'0"W 114°14'50"W 114°14'40"W

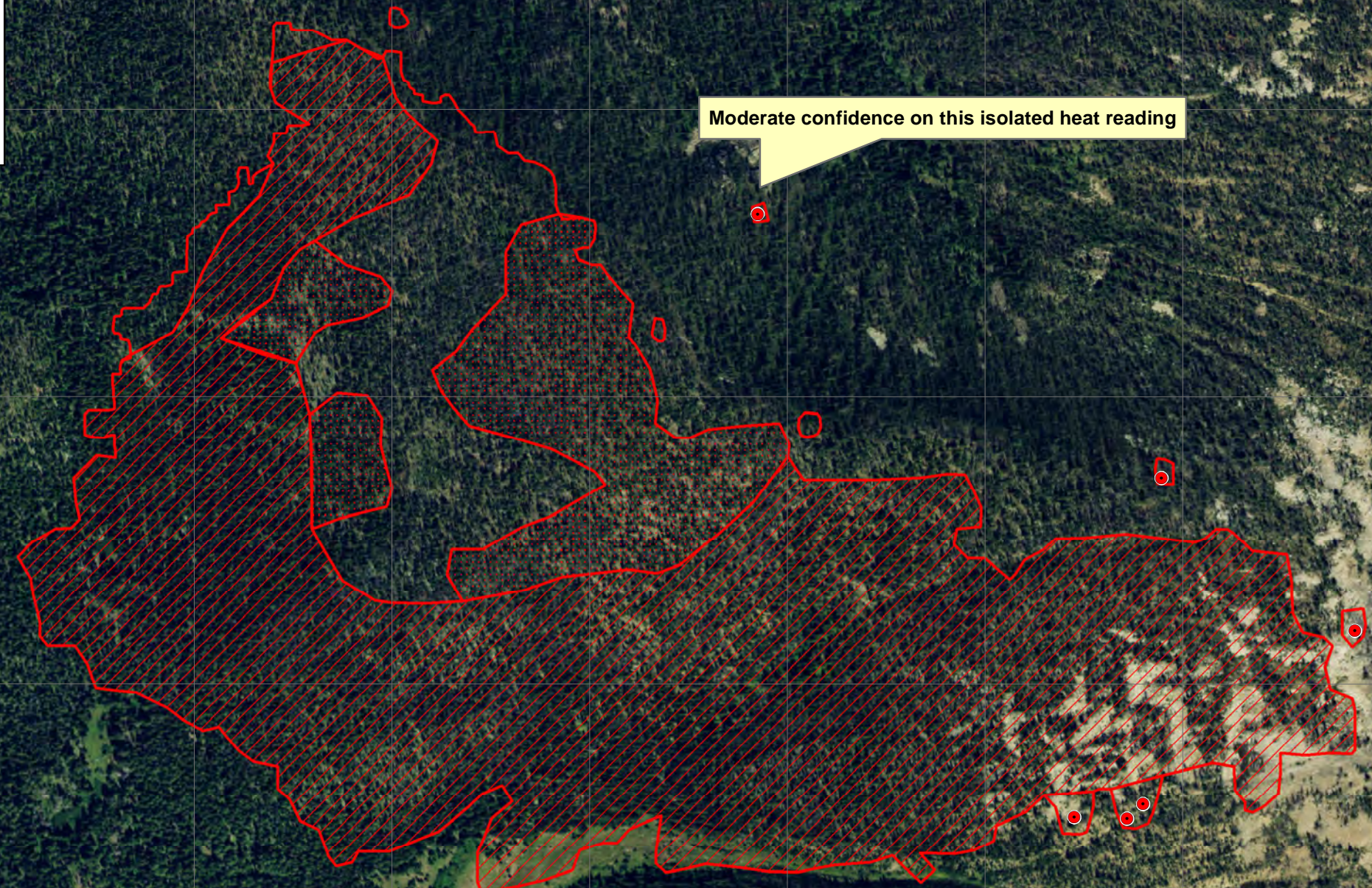
# Lolo Peak Infrared Map

MT-LNF-001288  
Flight: July 19, 2017 @ 0254 MDT  
Acres: 165  
Datum: 1983 NAD - UTM Zone 11



46°40'40"N  
46°40'30"N  
46°40'20"N  
46°40'10"N  
46°40'0"N





46°40'40"N  
46°40'30"N  
46°40'20"N  
46°40'10"N  
46°40'0"N

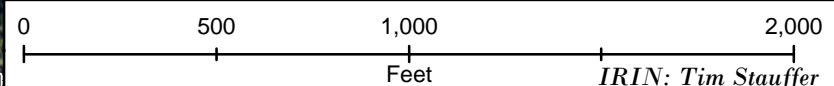


Moderate confidence on this isolated heat reading

Moderate confidence on this isolated heat reading

## Legend

-  Isolated Heat
-  Scattered Heat
-  Intense Heat
-  Heat Perimeter



IRIN: Tim Stauffer

114°16'30"W 114°16'20"W 114°16'10"W 114°16'0"W 114°15'50"W 114°15'40"W 114°15'30"W 114°15'20"W 114°15'10"W 114°15'0"W 114°14'50"W 114°14'40"W