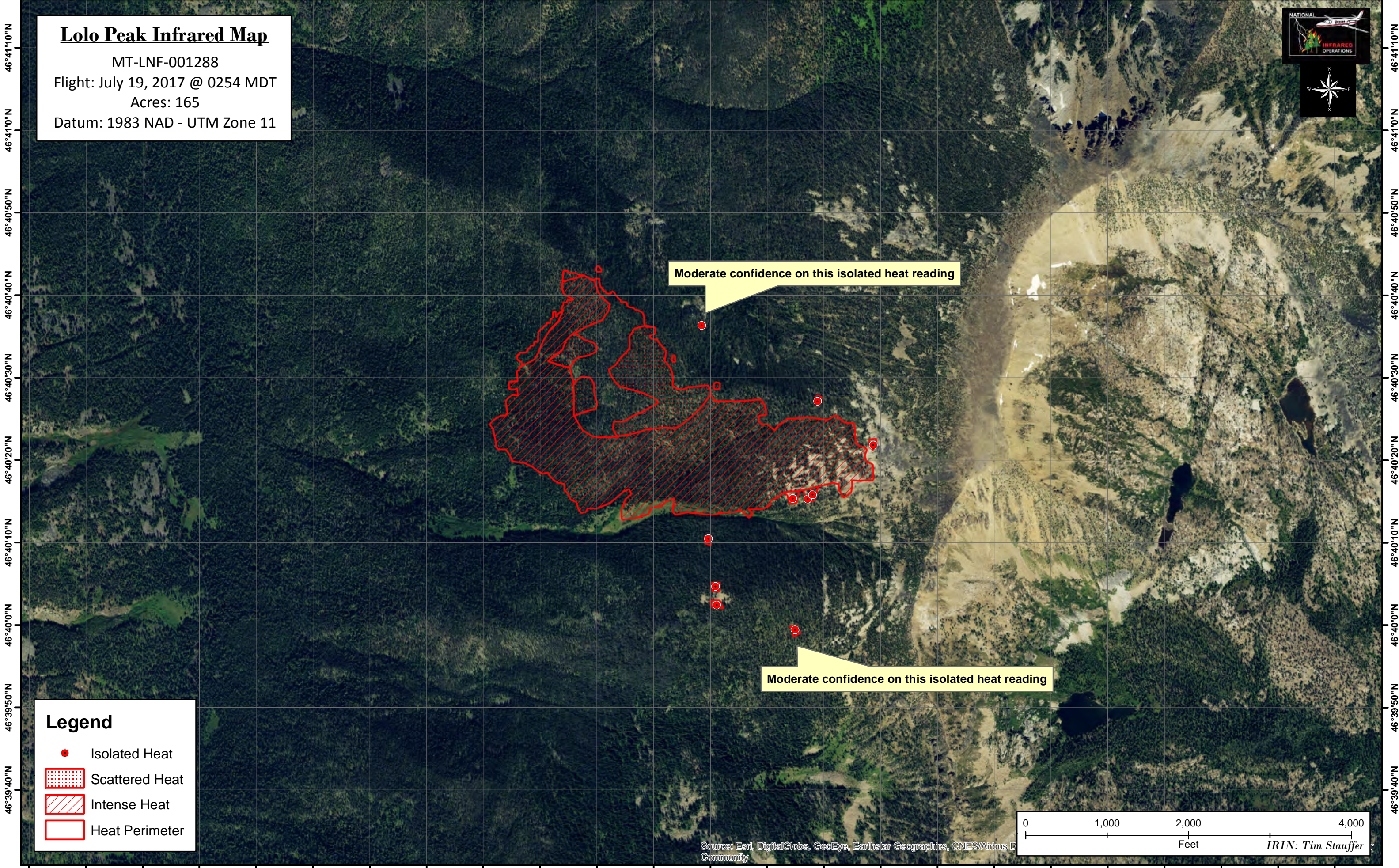


114°17'30"W 114°17'10"W 114°17'0"W 114°16'50"W 114°16'30"W 114°16'10"W 114°16'0"W 114°15'50"W 114°15'30"W 114°15'10"W 114°15'0"W 114°14'50"W 114°14'30"W 114°14'10"W 114°14'0"W 114°13'40"W



**Lolo Peak Infrared Map**  
MT-LNF-001288  
Flight: July 19, 2017 @ 0254 MDT  
Acres: 165  
Datum: 1983 NAD - UTM Zone 11

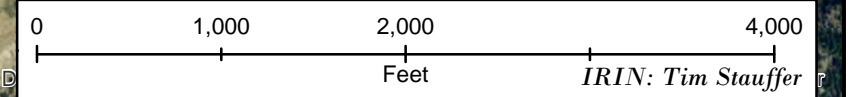


Moderate confidence on this isolated heat reading

Moderate confidence on this isolated heat reading

**Legend**

- Isolated Heat
- Scattered Heat
- Intense Heat
- Heat Perimeter



Source: Esri, DigitalGlobe, GeoEye, Earthstar Geographics, CNES/Airbus D  
Community  
IRIN: Tim Stauffer

114°17'30"W 114°17'10"W 114°17'0"W 114°16'50"W 114°16'30"W 114°16'10"W 114°16'0"W 114°15'50"W 114°15'30"W 114°15'10"W 114°15'0"W 114°14'50"W 114°14'30"W 114°14'10"W 114°14'0"W 114°13'40"W