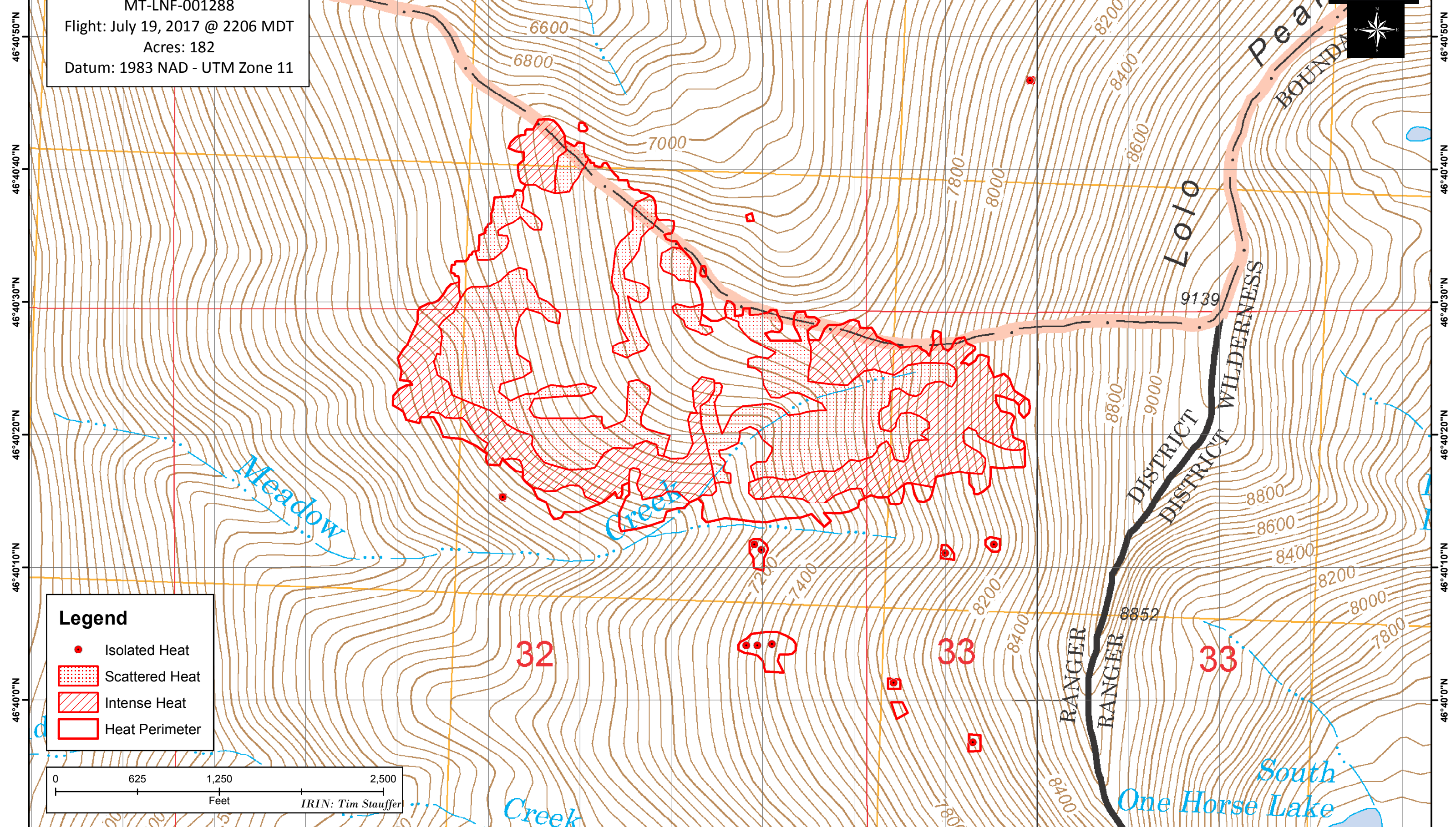


114°16'50"W 114°16'40"W 114°16'30"W 114°16'20"W 114°16'10"W 114°16'0"W 114°15'50"W 114°15'40"W 114°15'30"W 114°15'20"W 114°15'10"W 114°15'0"W 114°14'50"W 114°14'40"W 114°14'30"W 114°14'20"W

Lolo Peak Infrared Map
MT-LNF-001288
Flight: July 19, 2017 @ 2206 MDT
Acres: 182
Datum: 1983 NAD - UTM Zone 11



Legend

- Isolated Heat
- ▨ Scattered Heat
- ▧ Intense Heat
- ▭ Heat Perimeter

0 625 1,250 2,500
Feet
IRIN: Tim Stauffer

114°16'50"W 114°16'40"W 114°16'30"W 114°16'20"W 114°16'10"W 114°16'0"W 114°15'50"W 114°15'40"W 114°15'30"W 114°15'20"W 114°15'10"W 114°15'0"W 114°14'50"W 114°14'40"W 114°14'30"W 114°14'20"W