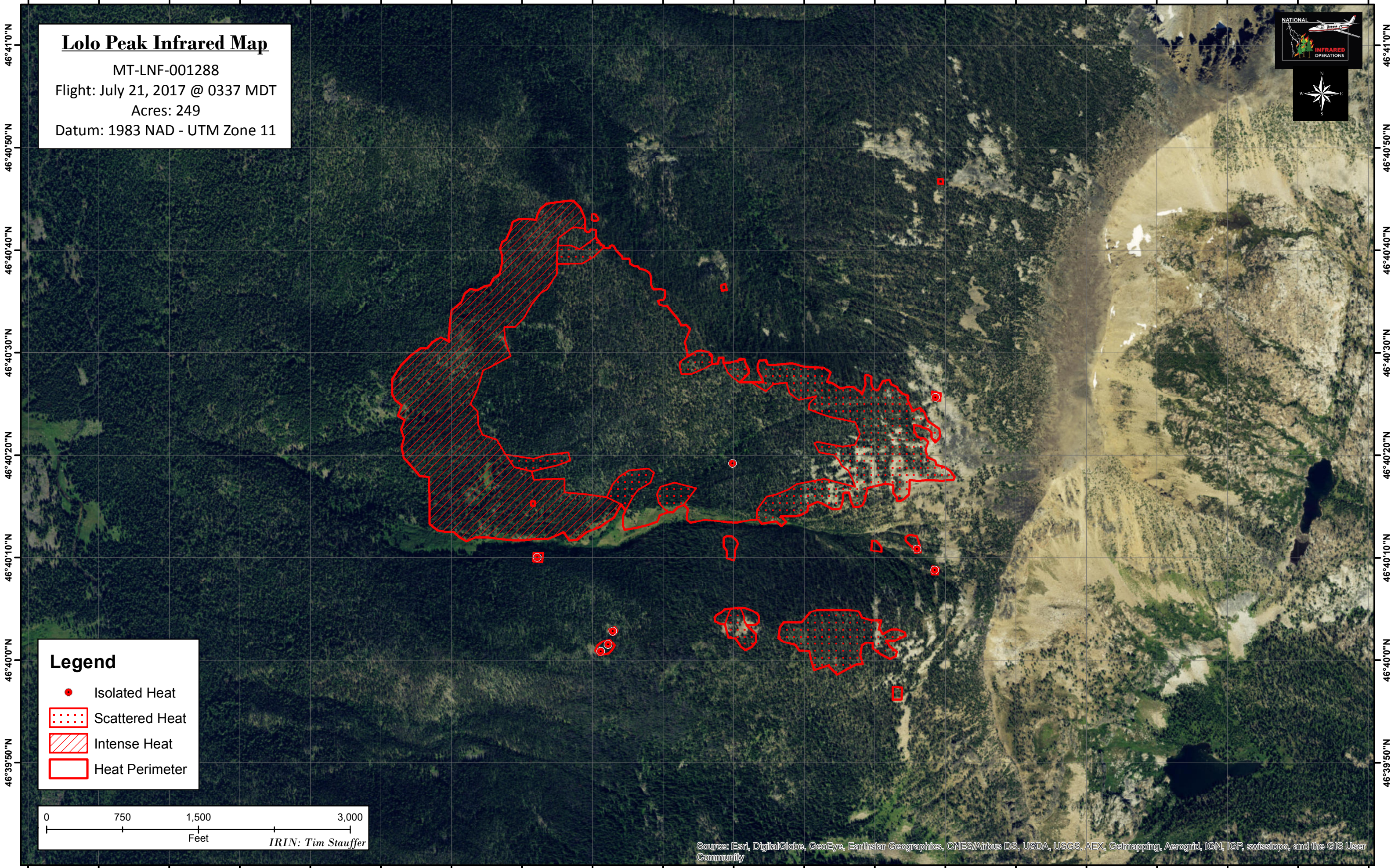






114°17'10"W 114°17'0"W 114°16'50"W 114°16'40"W 114°16'30"W 114°16'20"W 114°16'10"W 114°16'0"W 114°15'50"W 114°15'40"W 114°15'30"W 114°15'20"W 114°15'10"W 114°15'0"W 114°14'50"W 114°14'40"W 114°14'30"W 114°14'20"W 114°14'10"W 114°14'0"W

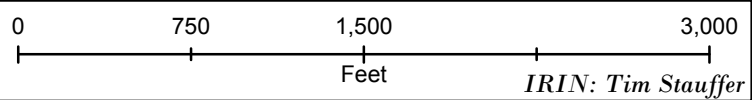


Lolo Peak Infrared Map
MT-LNF-001288
Flight: July 21, 2017 @ 0337 MDT
Acres: 249
Datum: 1983 NAD - UTM Zone 11



Legend

-  Isolated Heat
-  Scattered Heat
-  Intense Heat
-  Heat Perimeter



Source: Esri, DigitalGlobe, GeoEye, Earthstar Geographics, CNES/Airbus DS, USDA, USGS, AEX, Getmapping, Aerogrid, IGN, IGP, swisstopo, and the GIS User Community

114°17'10"W 114°17'0"W 114°16'50"W 114°16'40"W 114°16'30"W 114°16'20"W 114°16'10"W 114°16'0"W 114°15'50"W 114°15'40"W 114°15'30"W 114°15'20"W 114°15'10"W 114°15'0"W 114°14'50"W 114°14'40"W 114°14'30"W 114°14'20"W 114°14'10"W 114°14'0"W