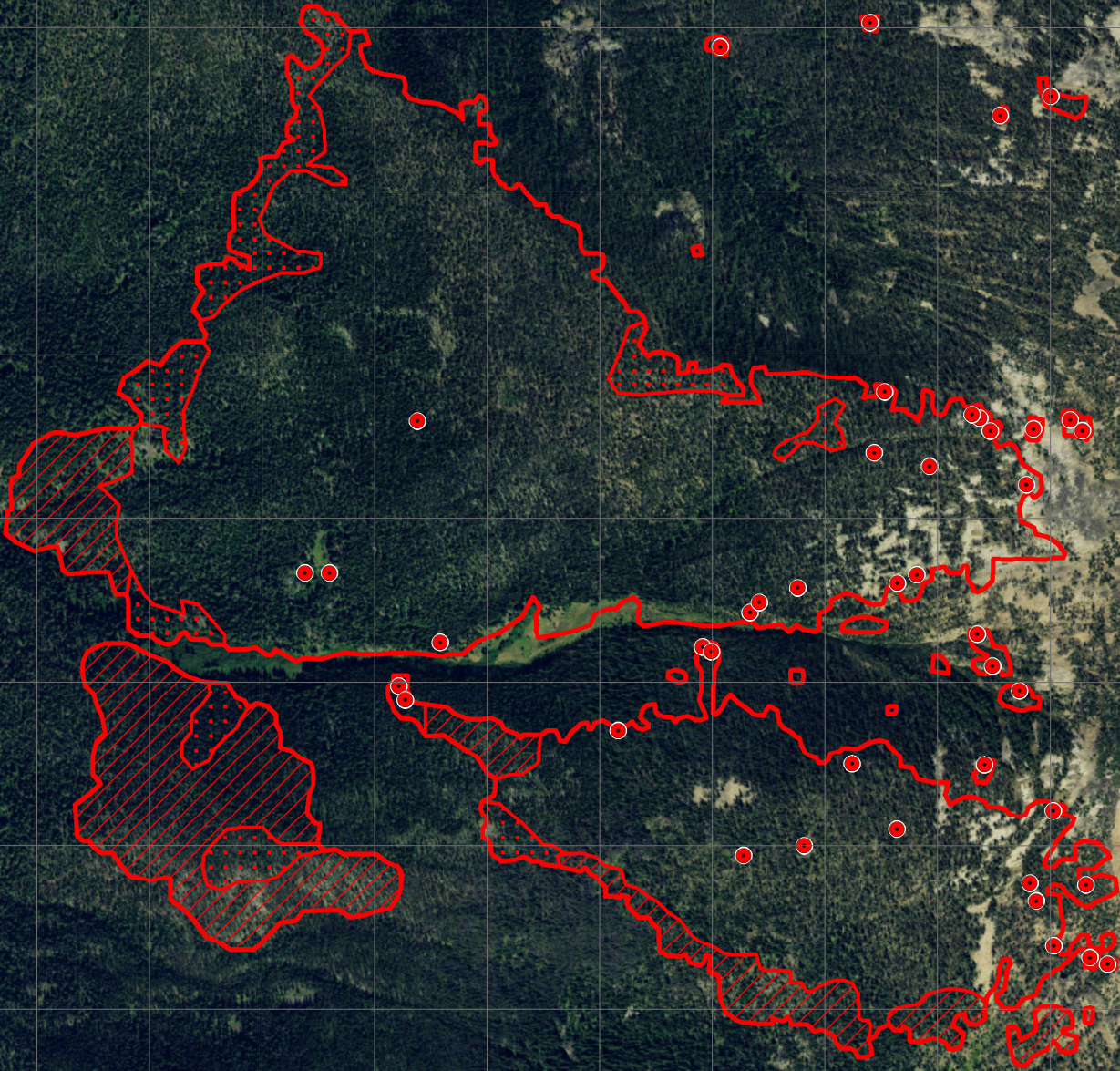


114°17'40"W 114°17'20"W 114°17'0"W 114°16'40"W 114°16'20"W 114°16'0"W 114°15'40"W 114°15'20"W 114°15'0"W 114°14'40"W 114°14'20"W 114°14'0"W 114°13'40"W

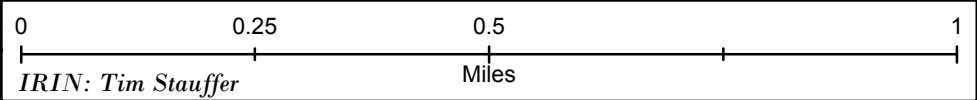
46°41'10"N
46°41'0"N
46°40'50"N
46°40'40"N
46°40'30"N
46°40'20"N
46°40'10"N
46°40'0"N
46°39'50"N
46°39'40"N
46°39'30"N

46°41'10"N
46°41'0"N
46°40'50"N
46°40'40"N
46°40'30"N
46°40'20"N
46°40'10"N
46°40'0"N
46°39'50"N
46°39'40"N
46°39'30"N

Lolo Peak Infrared Map
MT-LNF-001288
Flight: July 22, 2017 @ 2346 MDT
Acres: 468
Datum: 1983 NAD - UTM Zone 11



Legend
● Isolated Heat
▤ Scattered Heat
▨ Intense Heat
□ Heat Perimeter



IRIN: Tim Stauffer

Source: Esri, DigitalGlobe, GeoEye, Earthstar Geographics, CNES/Airbus DS, USDA, USGS, AEX, Getmapping, Aerogrid, IGN, IGP, swisstopo, and the GIS User Community

114°17'40"W 114°17'20"W 114°17'0"W 114°16'40"W 114°16'20"W 114°16'0"W 114°15'40"W 114°15'20"W 114°15'0"W 114°14'40"W 114°14'20"W 114°14'0"W 114°13'40"W