

114°18'W

114°17'W

114°16'W

114°15'W

46°42'N

46°41'N

46°40'N

46°39'N

46°38'N

46°42'N

46°41'N

46°40'N

46°39'N

46°38'N

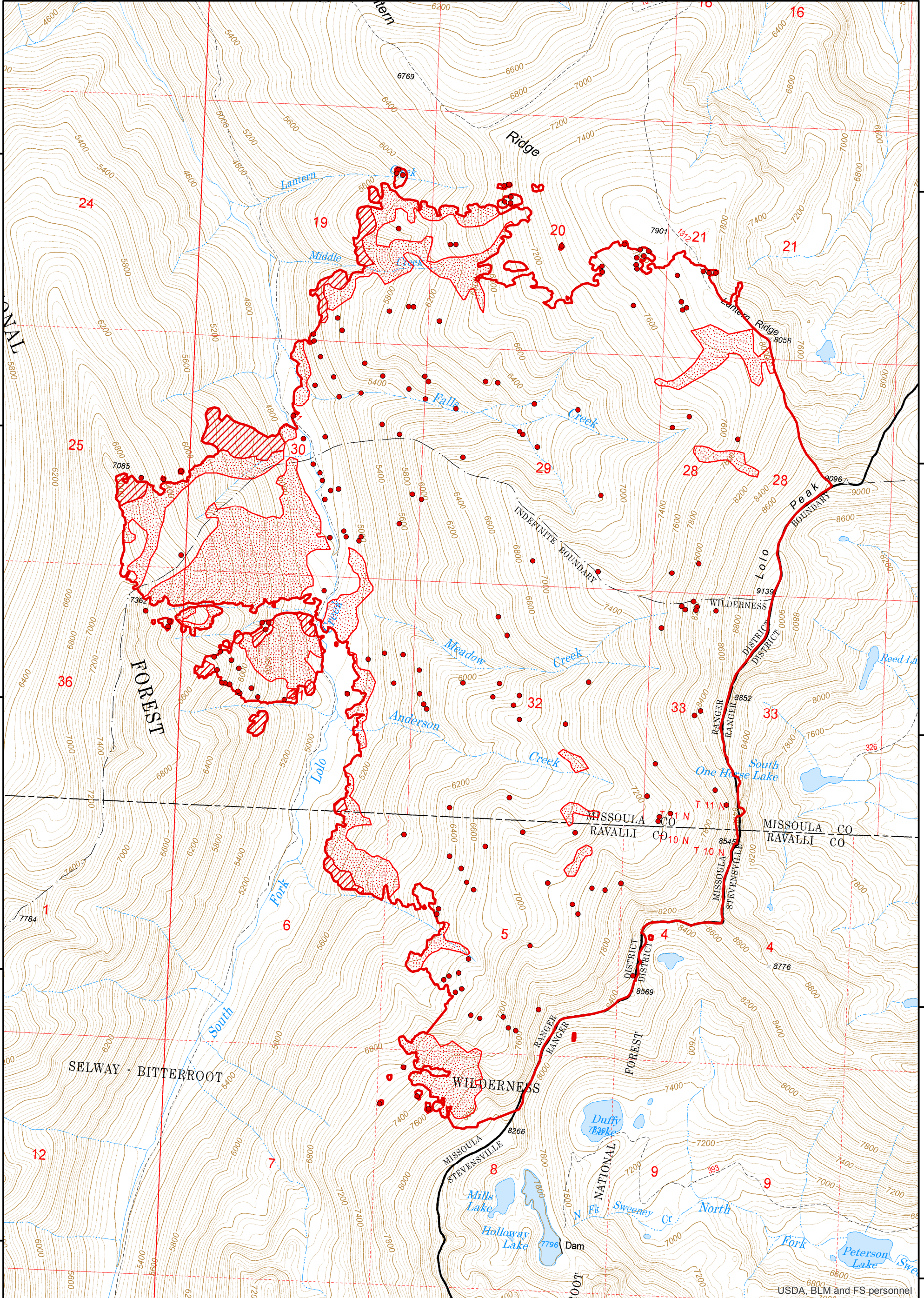
114°18'W





114°17'W

114°16'W

114°15'W

114°14'W

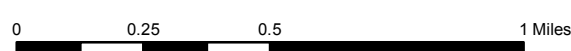


-  Heat Perimeter
-  Intense Heat Areas
-  Scattered Heat Areas
-  Isolated Heat Sources

NAD 1983 UTM Zone 12N



Lolo Peak
 MT-LNF-001288
 Infrared Heat Sources
 1:24,000



IR Interpreter: Brian Monroe
 IR interpreted acres: 4,122
 Date: 07/29/2017
 Time received the Image: 0028 hrs

USDA, BLM and FS personnel