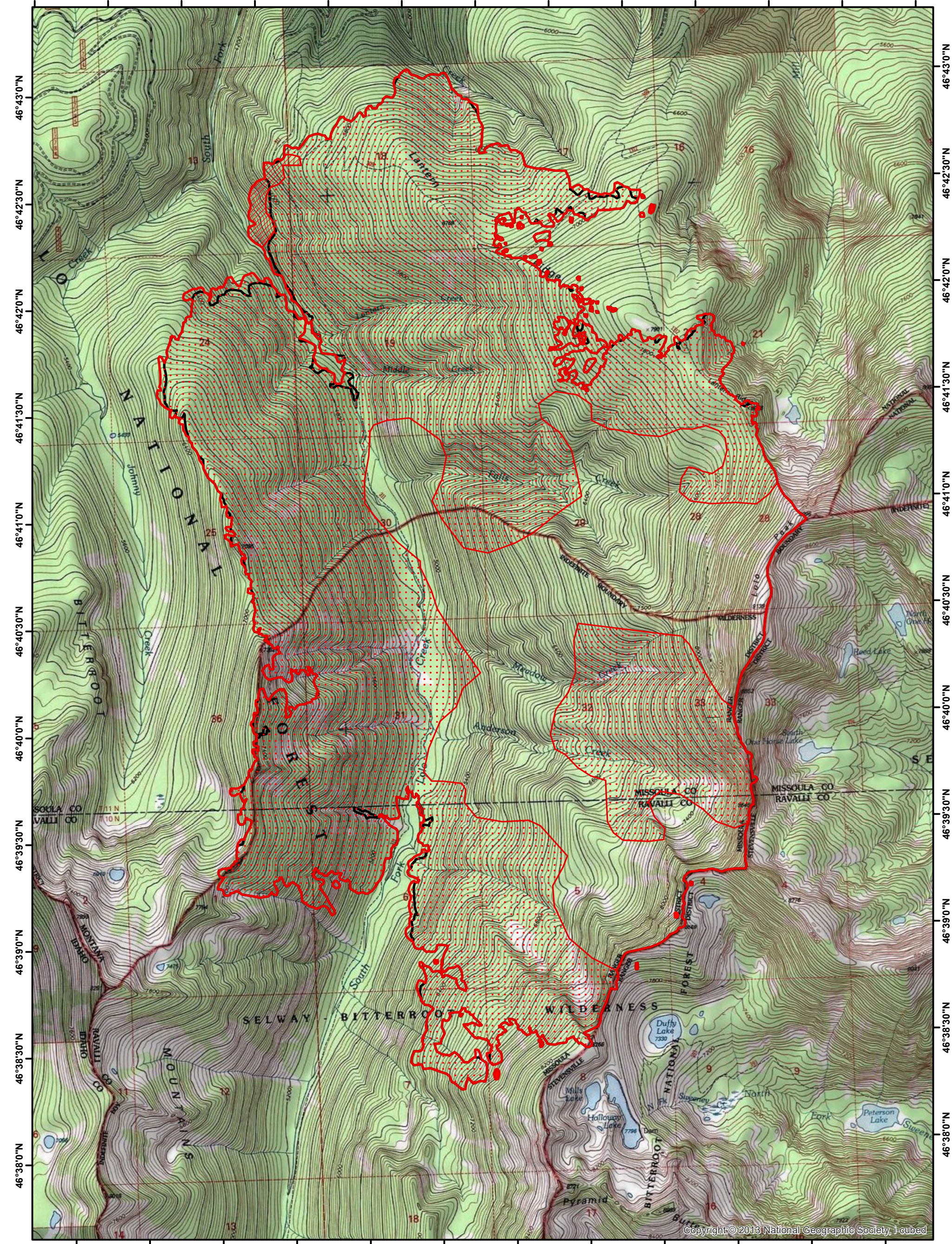







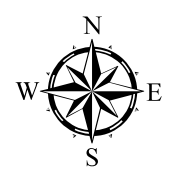
114°19'30"W 114°19'0"W 114°18'30"W 114°18'0"W 114°17'30"W 114°17'0"W 114°16'30"W 114°16'0"W 114°15'30"W 114°15'0"W 114°14'30"W 114°14'0"W 114°13'30"W



114°19'30"W 114°19'0"W 114°18'30"W 114°18'0"W 114°17'30"W 114°17'0"W 114°16'30"W 114°16'0"W 114°15'30"W 114°15'0"W 114°14'30"W 114°14'0"W

-  Heat Perimeter
-  Intense Heat
-  Scattered Heat
-  Isolated Heat Sources
-  Previous Heat Perimeter

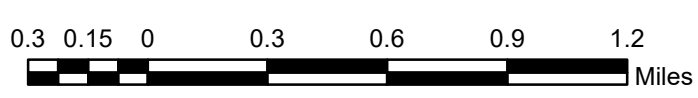
NAD 1983 UTM Zone 11



Lolo Peak

MT-LNF-001288

Infrared Heat Sources



IR Interpreter: Buck Buchanan
 Interpreted Acres: 7,177
 Date: 08/05/2017
 Time Imagery Received: 2314 hrs.