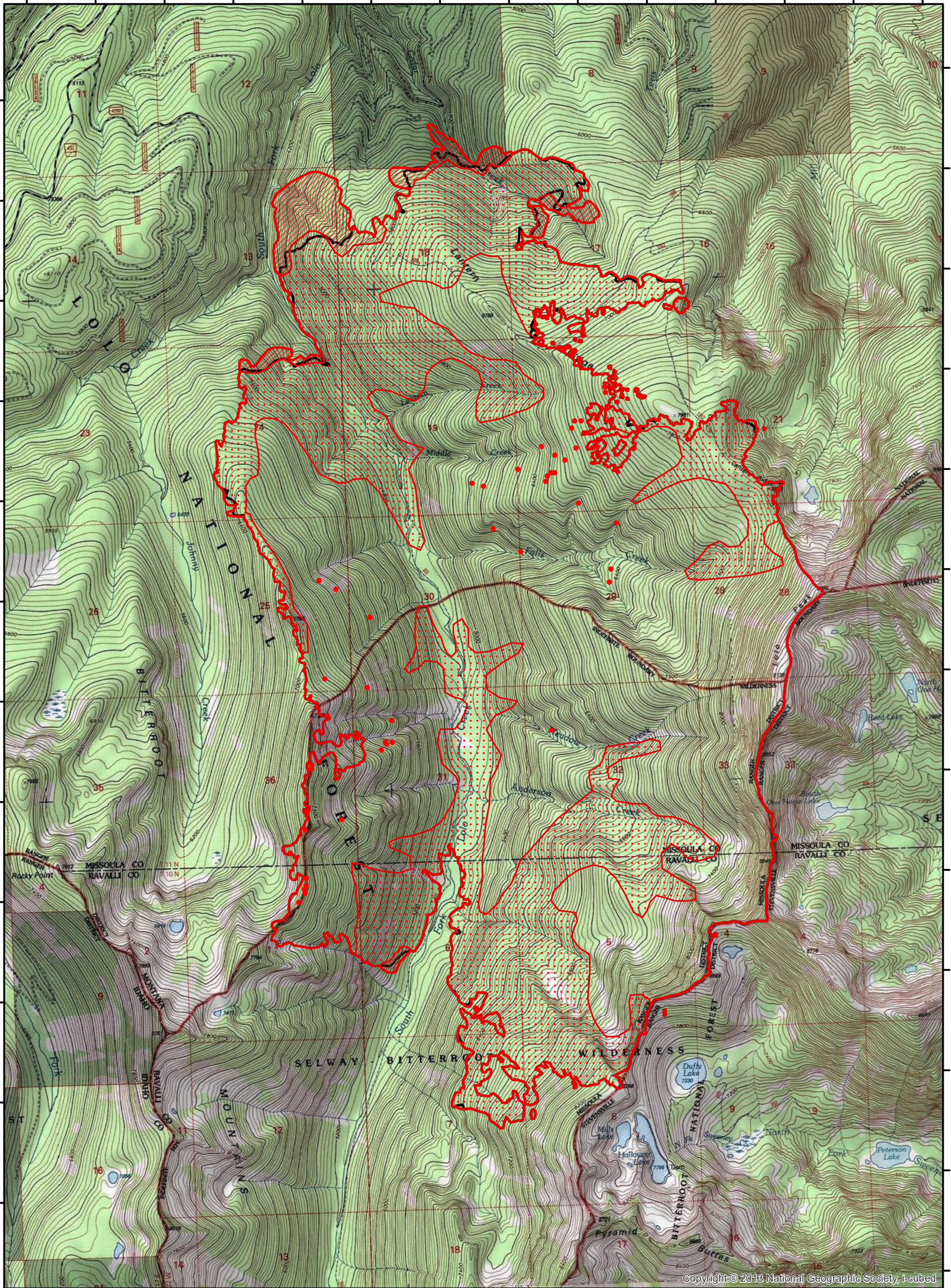


114°20'0"W 114°19'30"W 114°19'0"W 114°18'30"W 114°18'0"W 114°17'30"W 114°17'0"W 114°16'30"W 114°16'0"W 114°15'30"W 114°15'0"W 114°14'30"W 114°14'0"W 114°13'30"W






46°43'30"N
46°43'0"N
46°42'30"N
46°42'0"N
46°41'30"N
46°41'0"N
46°40'30"N
46°40'0"N
46°39'30"N
46°39'0"N
46°38'30"N
46°38'0"N
46°37'30"N

46°43'30"N
46°43'0"N
46°42'30"N
46°42'0"N
46°41'30"N
46°41'0"N
46°40'30"N
46°40'0"N
46°39'30"N
46°39'0"N
46°38'30"N
46°38'0"N
46°37'30"N

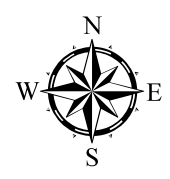


Copyright © 2013 National Geographic Society, i-cubed

114°20'0"W 114°19'30"W 114°19'0"W 114°18'30"W 114°18'0"W 114°17'30"W 114°17'0"W 114°16'30"W 114°16'0"W 114°15'30"W 114°15'0"W 114°14'30"W 114°14'0"W

-  Heat Perimeter
-  Intense Heat
-  Scattered Heat
-  Isolated Heat Sources
-  Previous Heat Perimeter

NAD 1983 UTM Zone 11



Lolo Peak

MT-LNF-001288

Infrared Heat Sources



IR Interpreter: Buck Buchanan
 Interpreted Acres: 7,644
 Date: 08/08/2017
 Time Imagery Received: 2344 hrs.