

114°22'0"W 114°21'0"W 114°20'0"W 114°19'0"W 114°18'0"W 114°17'0"W 114°16'0"W 114°15'0"W 114°14'0"W 114°13'0"W 114°12'0"W 114°11'0"W 114°10'0"W 114°9'0"W 114°8'0"W 114°7'0"W 114°6'0"W 114°5'0"W

# Lolo Peak Infrared Map

## August 17, 2017

MT-LNF-001288

Flight: August 16, 2017 @ 2330 MDT

Acres: 15,090

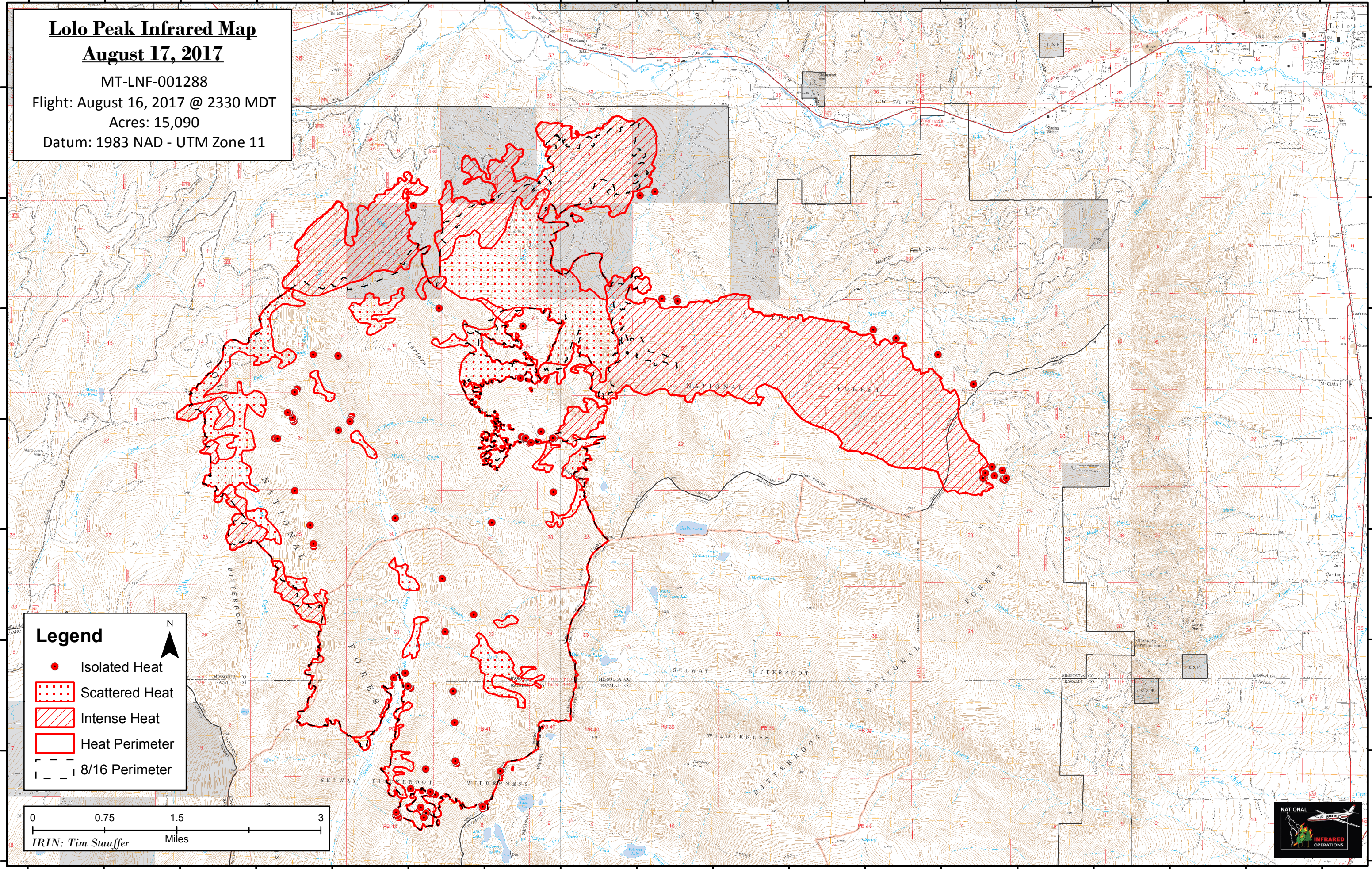
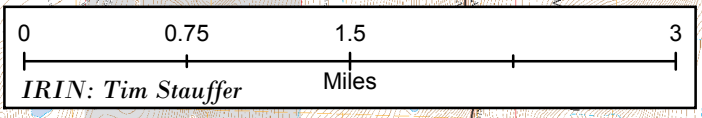
Datum: 1983 NAD - UTM Zone 11

46°45'0"N  
46°44'0"N  
46°43'0"N  
46°42'0"N  
46°41'0"N  
46°40'0"N  
46°39'0"N  
46°38'0"N

46°45'0"N  
46°44'0"N  
46°43'0"N  
46°42'0"N  
46°41'0"N  
46°40'0"N  
46°39'0"N  
46°38'0"N

**Legend**

- Isolated Heat
- Scattered Heat
- Intense Heat
- Heat Perimeter
- 8/16 Perimeter



114°22'0"W 114°21'0"W 114°20'0"W 114°19'0"W 114°18'0"W 114°17'0"W 114°16'0"W 114°15'0"W 114°14'0"W 114°13'0"W 114°12'0"W 114°11'0"W 114°10'0"W 114°9'0"W 114°8'0"W 114°7'0"W 114°6'0"W 114°5'0"W