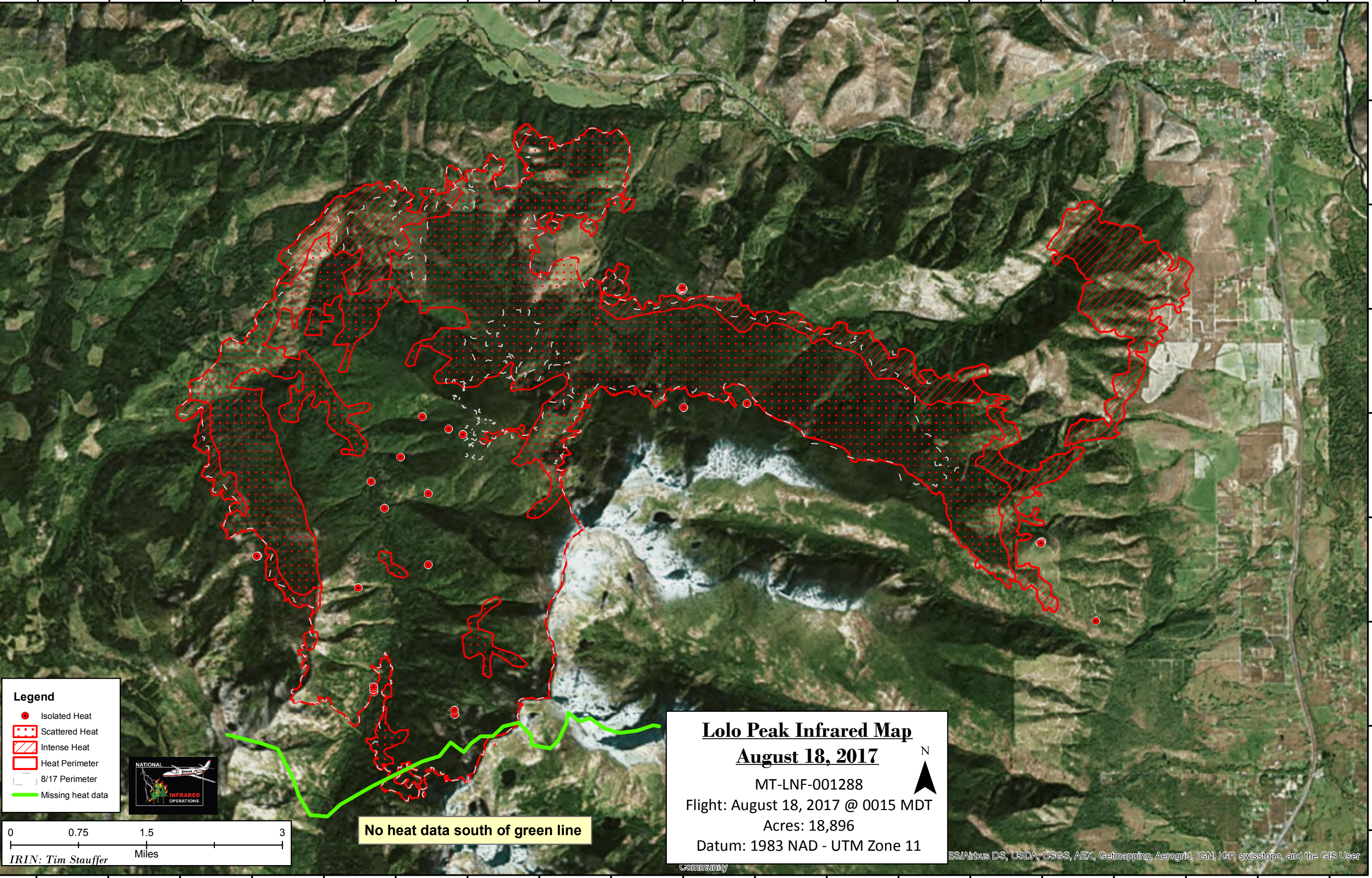


114°22'0"W 114°21'0"W 114°20'0"W 114°19'0"W 114°18'0"W 114°17'0"W 114°16'0"W 114°15'0"W 114°14'0"W 114°13'0"W 114°12'0"W 114°11'0"W 114°10'0"W 114°9'0"W 114°8'0"W 114°7'0"W 114°6'0"W 114°5'0"W 114°4'0"W

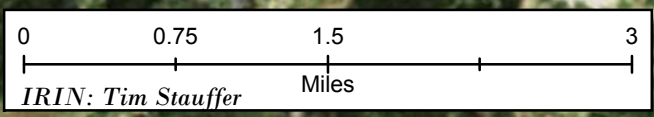
46°45'0"N
46°44'0"N
46°43'0"N
46°42'0"N
46°41'0"N
46°40'0"N
46°39'0"N
46°38'0"N

46°45'0"N
46°44'0"N
46°43'0"N
46°42'0"N
46°41'0"N
46°40'0"N
46°39'0"N
46°38'0"N



Legend

- Isolated Heat
- ▨ Scattered Heat
- ▩ Intense Heat
- ▭ Heat Perimeter
- ▭ 8/17 Perimeter
- Missing heat data



No heat data south of green line

Lolo Peak Infrared Map
August 18, 2017
 MT-LNF-001288
 Flight: August 18, 2017 @ 0015 MDT
 Acres: 18,896
 Datum: 1983 NAD - UTM Zone 11



ES/Airbus DS, USDA, USGS, AEX, Getmapping, Aerogrid, IGN, IGP, swisstopo, and the GIS User

114°22'0"W 114°21'0"W 114°20'0"W 114°19'0"W 114°18'0"W 114°17'0"W 114°16'0"W 114°15'0"W 114°14'0"W 114°13'0"W 114°12'0"W 114°11'0"W 114°10'0"W 114°9'0"W 114°8'0"W 114°7'0"W 114°6'0"W 114°5'0"W 114°4'0"W