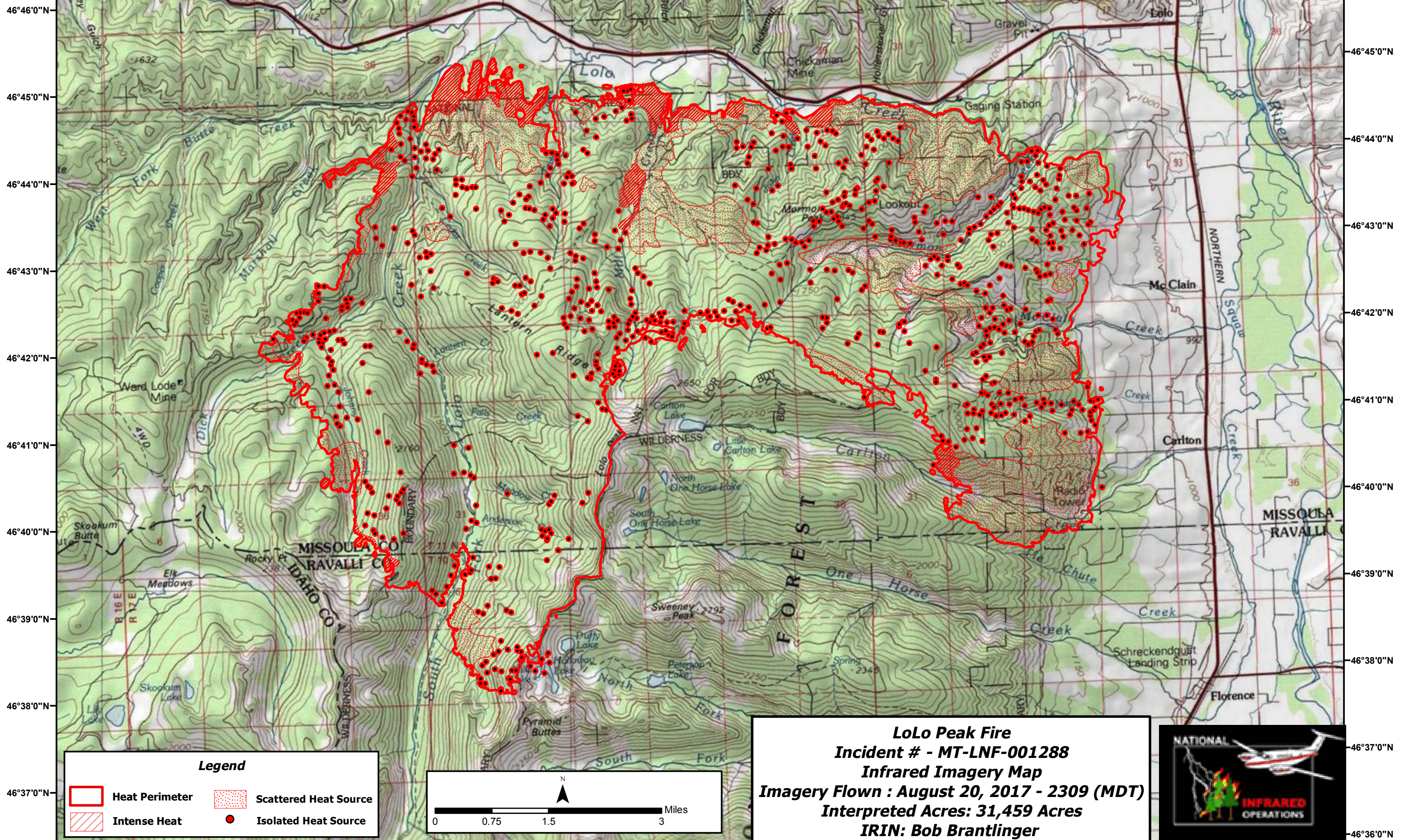




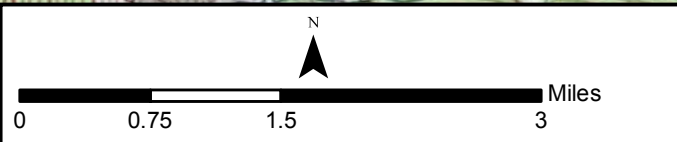


114°23'0"W 114°22'0"W 114°21'0"W 114°20'0"W 114°19'0"W 114°18'0"W 114°17'0"W 114°16'0"W 114°15'0"W 114°14'0"W 114°13'0"W 114°12'0"W 114°11'0"W 114°10'0"W 114°9'0"W 114°8'0"W 114°7'0"W 114°6'0"W 114°5'0"W 114°4'0"W 114°3'0"W

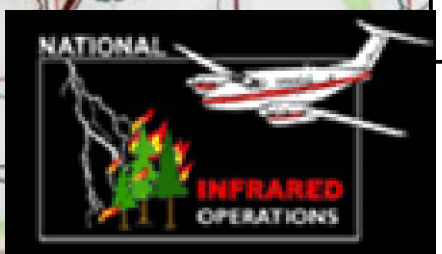


Legend

 Heat Perimeter	 Scattered Heat Source
 Intense Heat	 Isolated Heat Source



LoLo Peak Fire
Incident # - MT-LNF-001288
Infrared Imagery Map
Imagery Flown : August 20, 2017 - 2309 (MDT)
Interpreted Acres: 31,459 Acres
IRIN: Bob Brantlinger



114°24'0"W 114°23'0"W 114°22'0"W 114°21'0"W 114°20'0"W 114°19'0"W 114°18'0"W 114°17'0"W 114°16'0"W 114°15'0"W 114°14'0"W 114°13'0"W 114°12'0"W 114°11'0"W 114°10'0"W 114°9'0"W 114°8'0"W 114°7'0"W 114°6'0"W 114°5'0"W 114°4'0"W 114°3'0"W