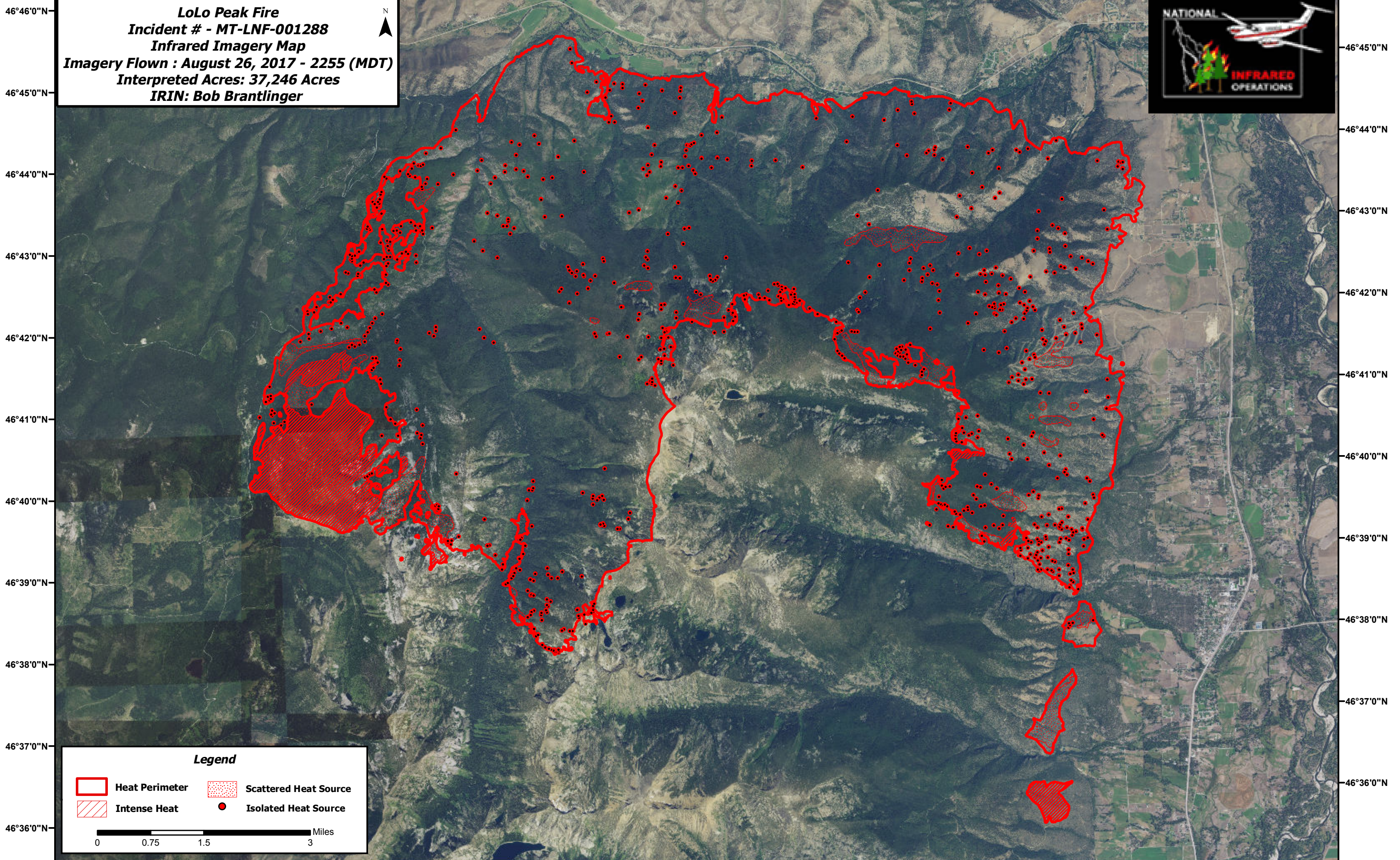






114°25'0"W 114°24'0"W 114°23'0"W 114°22'0"W 114°21'0"W 114°20'0"W 114°19'0"W 114°18'0"W 114°17'0"W 114°16'0"W 114°15'0"W 114°14'0"W 114°13'0"W 114°12'0"W 114°11'0"W 114°10'0"W 114°9'0"W 114°8'0"W 114°7'0"W 114°6'0"W 114°5'0"W 114°4'0"W 114°3'0"W

**LoLo Peak Fire**  
**Incident # - MT-LNF-001288**  
**Infrared Imagery Map**  
**Imagery Flown : August 26, 2017 - 2255 (MDT)**  
**Interpreted Acres: 37,246 Acres**  
**IRIN: Bob Brantlinger**



**Legend**

 Heat Perimeter	 Scattered Heat Source
 Intense Heat	 Isolated Heat Source

0 0.75 1.5 3 Miles

114°25'0"W 114°24'0"W 114°23'0"W 114°22'0"W 114°21'0"W 114°20'0"W 114°19'0"W 114°18'0"W 114°17'0"W 114°16'0"W 114°15'0"W 114°14'0"W 114°13'0"W 114°12'0"W 114°11'0"W 114°10'0"W 114°9'0"W 114°8'0"W 114°7'0"W 114°6'0"W 114°5'0"W 114°4'0"W 114°3'0"W