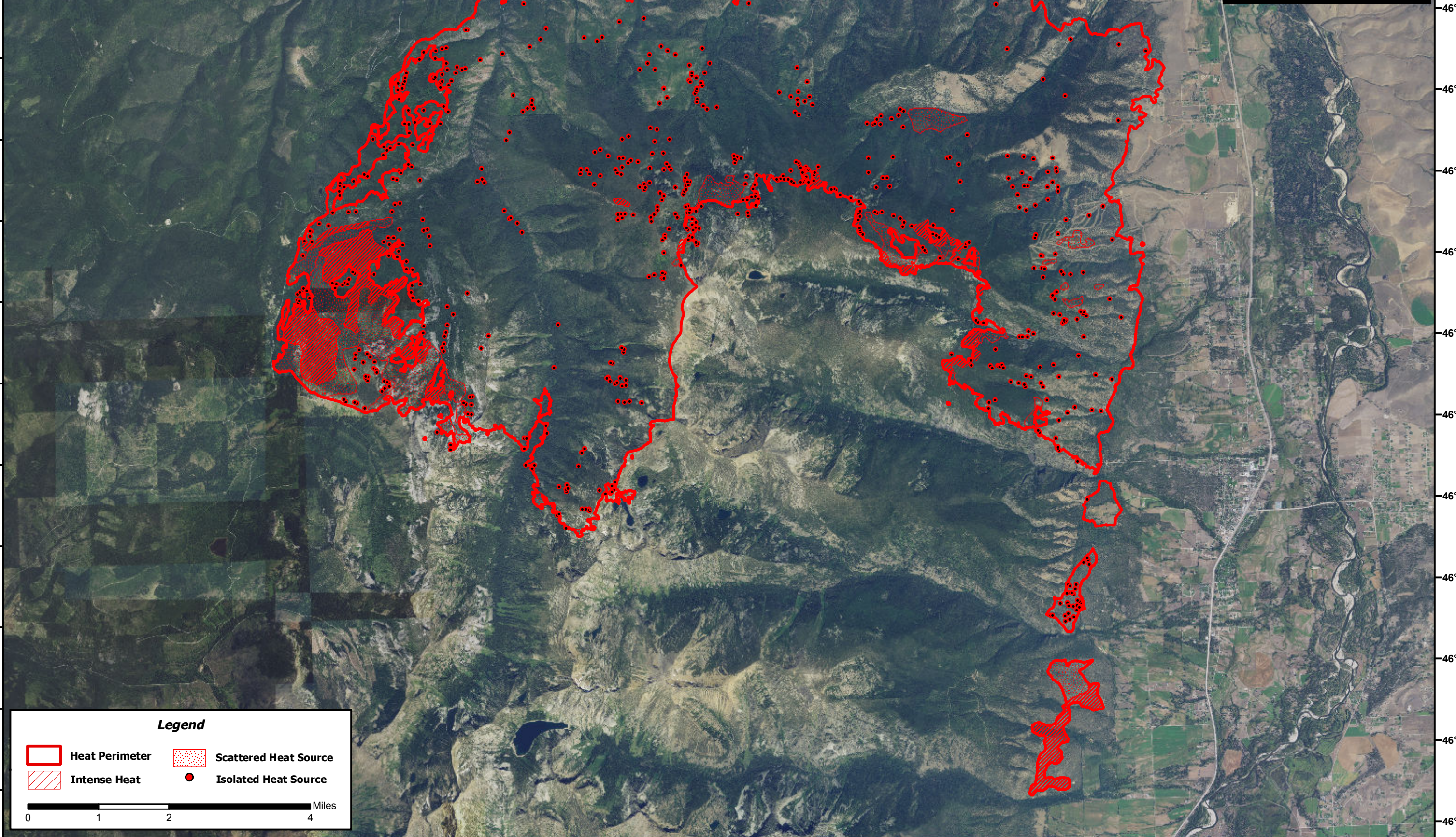

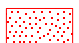




114°26'0"W 114°24'0"W 114°22'0"W 114°20'0"W 114°18'0"W 114°16'0"W 114°14'0"W 114°12'0"W 114°10'0"W 114°9'0"W 114°8'0"W 114°7'0"W 114°6'0"W 114°5'0"W 114°4'0"W 114°3'0"W 114°2'0"W 114°1'0"W

LoLo Peak Fire
Incident # - MT-LNF-001288
Infrared Imagery Map
Imagery Flown : August 28, 2017 - 0043 (MDT)
Interpreted Acres: 37,844 Acres
IRIN: Bob Brantlinger



Legend

 Heat Perimeter	 Scattered Heat Source
 Intense Heat	 Isolated Heat Source

0 1 2 4 Miles

114°26'0"W 114°24'0"W 114°22'0"W 114°20'0"W 114°18'0"W 114°16'0"W 114°14'0"W 114°12'0"W 114°10'0"W 114°9'0"W 114°8'0"W 114°7'0"W 114°6'0"W 114°5'0"W 114°4'0"W 114°3'0"W 114°2'0"W

46°46'0"N
46°45'0"N
46°44'0"N
46°43'0"N
46°42'0"N
46°41'0"N
46°40'0"N
46°39'0"N
46°38'0"N
46°37'0"N
46°36'0"N
46°35'0"N
46°34'0"N