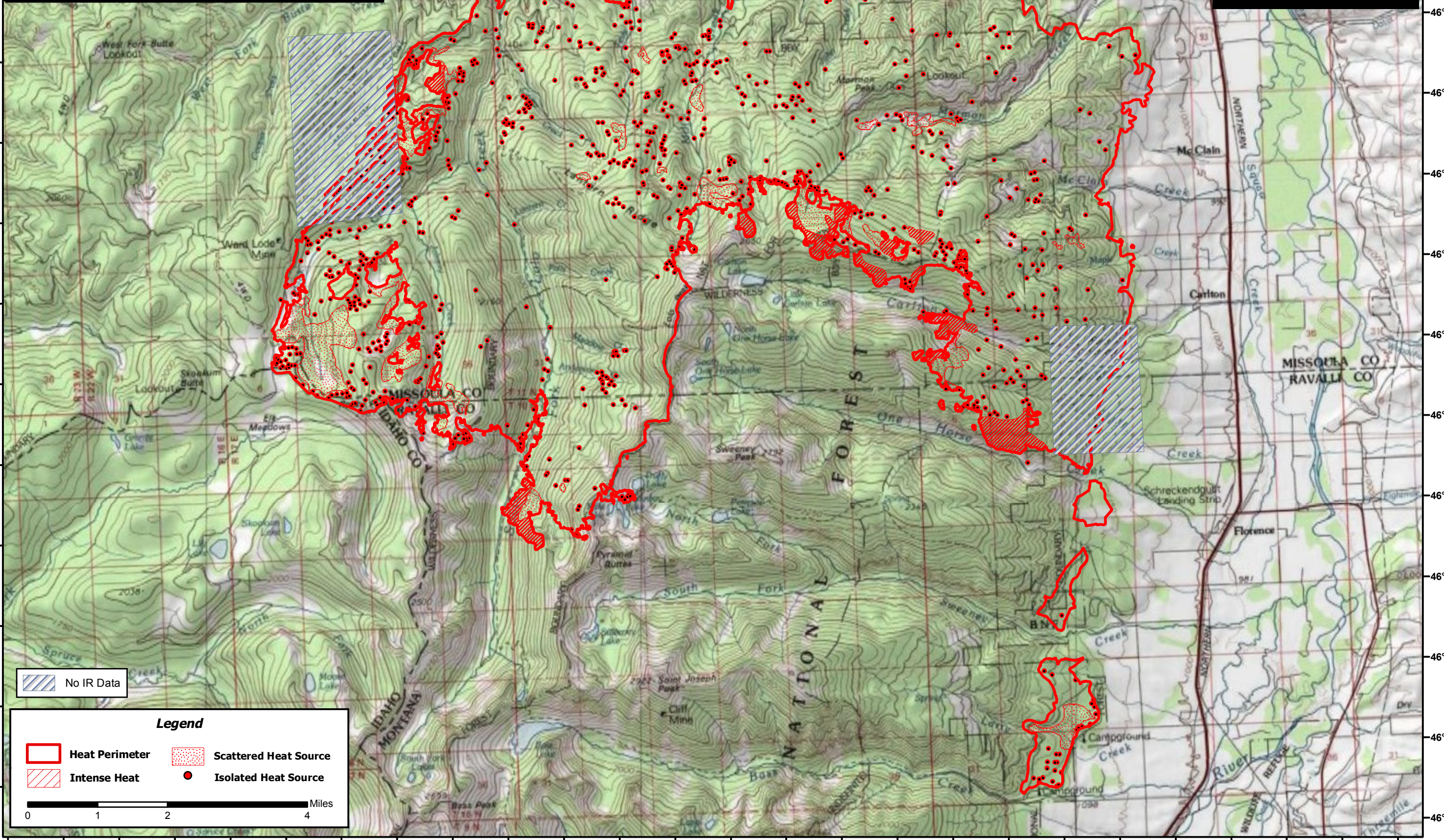






114°26'0"W 114°24'0"W 114°22'0"W 114°20'0"W 114°18'0"W 114°16'0"W 114°14'0"W 114°12'0"W 114°10'0"W 114°9'0"W 114°8'0"W 114°7'0"W 114°6'0"W 114°5'0"W 114°4'0"W 114°3'0"W 114°2'0"W 114°1'0"W

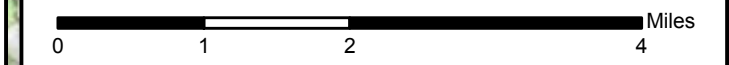
LoLo Peak Fire
Incident # - MT-LNF-001288
Infrared Imagery Map
Imagery Flown : August 29, 2017 - 2213 (MDT)
Interpreted Acres: 39,878 Acres
IRIN: Bob Brantlinger



 No IR Data

Legend

 Heat Perimeter	 Scattered Heat Source
 Intense Heat	 Isolated Heat Source



114°26'0"W 114°24'0"W 114°22'0"W 114°20'0"W 114°18'0"W 114°16'0"W 114°14'0"W 114°12'0"W 114°10'0"W 114°9'0"W 114°8'0"W 114°7'0"W 114°6'0"W 114°5'0"W 114°4'0"W 114°3'0"W 114°2'0"W 114°1'0"W