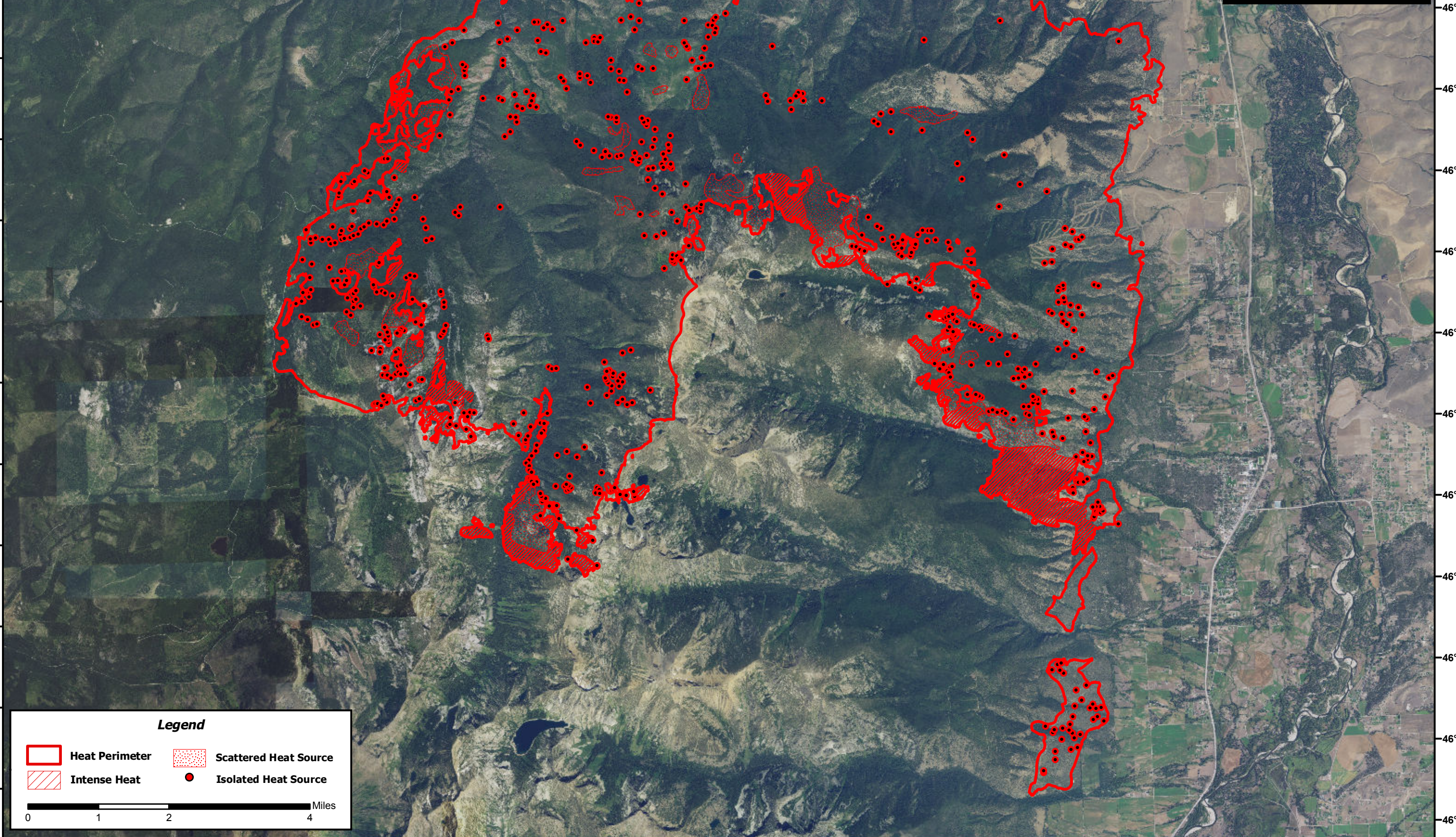

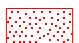
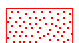



114°26'0"W 114°24'0"W 114°22'0"W 114°20'0"W 114°18'0"W 114°16'0"W 114°14'0"W 114°12'0"W 114°10'0"W 114°9'0"W 114°8'0"W 114°7'0"W 114°6'0"W 114°5'0"W 114°4'0"W 114°3'0"W 114°2'0"W 114°1'0"W

**LoLo Peak Fire**  
**Incident # - MT-LNF-001288**  
**Infrared Imagery Map**  
**Imagery Flown : August 31, 2017 - 2351 (MDT)**  
**Interpreted Acres: 41,339 Acres**  
**IRIN: Bob Brantlinger**



**Legend**

 Heat Perimeter	 Intense Heat	 Scattered Heat Source	 Isolated Heat Source
--	--	---	--

0 1 2 4 Miles

114°26'0"W 114°24'0"W 114°22'0"W 114°20'0"W 114°18'0"W 114°16'0"W 114°14'0"W 114°12'0"W 114°10'0"W 114°9'0"W 114°8'0"W 114°7'0"W 114°6'0"W 114°5'0"W 114°4'0"W 114°3'0"W 114°2'0"W

46°46'0"N  
46°45'0"N  
46°44'0"N  
46°43'0"N  
46°42'0"N  
46°41'0"N  
46°40'0"N  
46°39'0"N  
46°38'0"N  
46°37'0"N  
46°36'0"N  
46°35'0"N  
46°34'0"N