

114°25'W 114°20'W 114°15'W 114°10'W 114°5'W

46°45'N
46°40'N
46°35'N

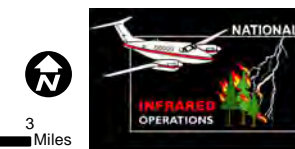
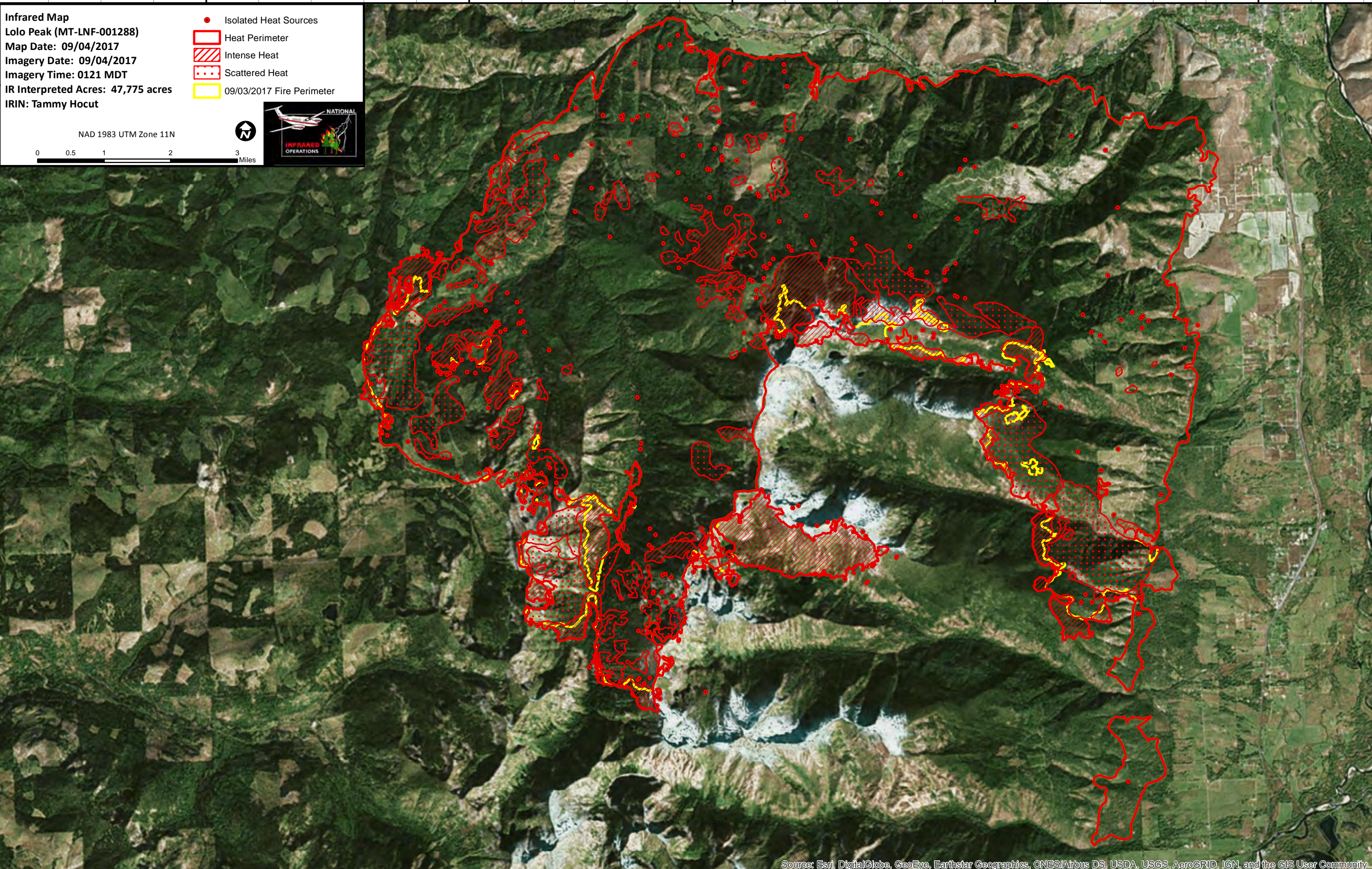
46°45'N
46°40'N
46°35'N

Infrared Map
Lolo Peak (MT-LNF-001288)
 Map Date: 09/04/2017
 Imagery Date: 09/04/2017
 Imagery Time: 0121 MDT
 IR Interpreted Acres: 47,775 acres
 IRIN: Tammy Hocut

- Isolated Heat Sources
- ▭ Heat Perimeter
- ▨ Intense Heat
- ▤ Scattered Heat
- ▭ 09/03/2017 Fire Perimeter

NAD 1983 UTM Zone 11N

0 0.5 1 2 3 Miles

Source: Esri, DigitalGlobe, GeoEye, Earthstar Geographics, CNES/Airbus DS, USDA, USGS, AeroGRID, IGN, and the GIS User Community

114°25'W 114°20'W 114°15'W 114°10'W 114°5'W