

114°25'W

114°20'W

114°15'W

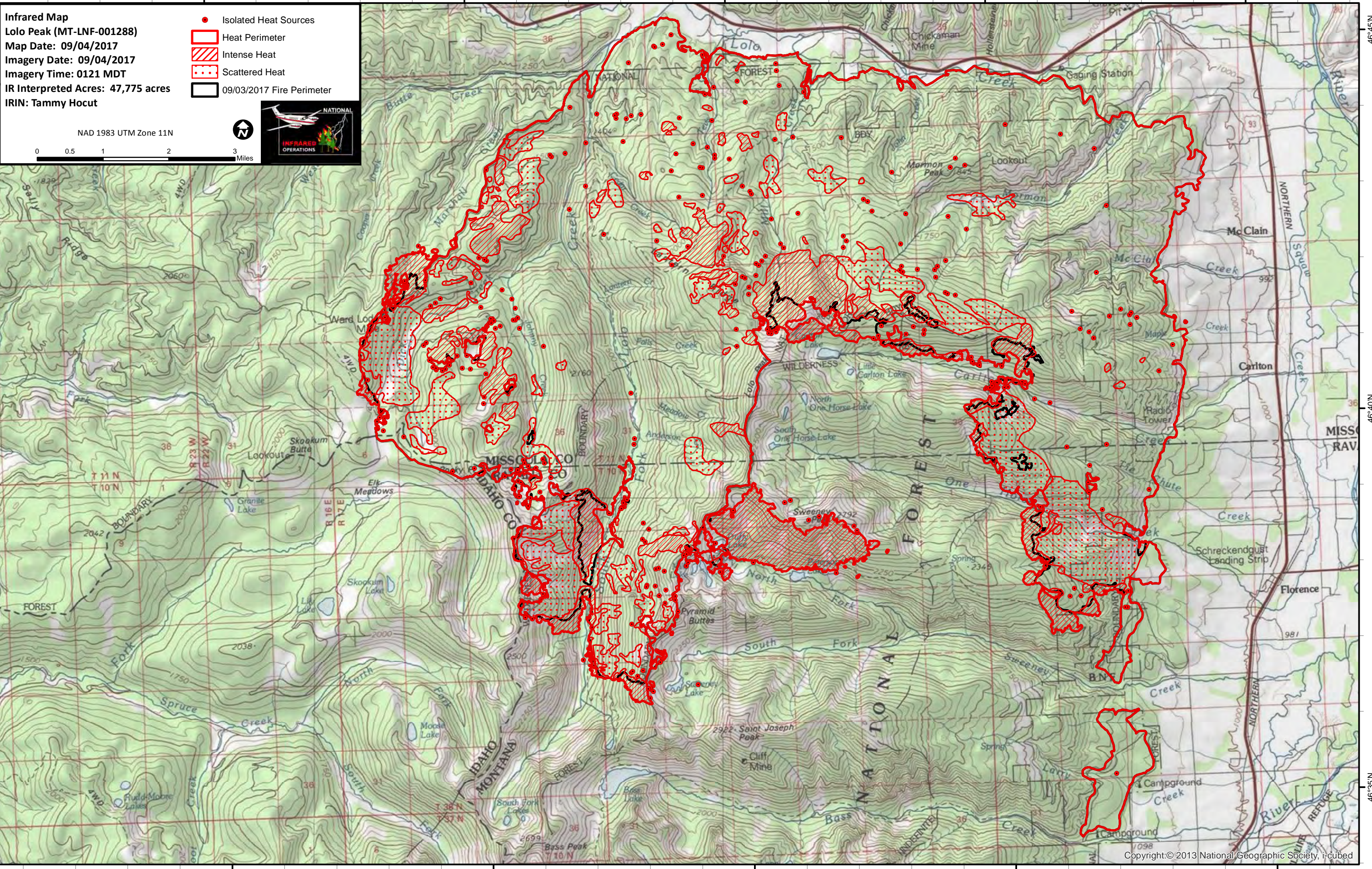
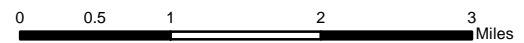
114°10'W

114°5'W

Infrared Map
Lolo Peak (MT-LNF-001288)
Map Date: 09/04/2017
Imagery Date: 09/04/2017
Imagery Time: 0121 MDT
IR Interpreted Acres: 47,775 acres
IRIN: Tammy Hocut

- Isolated Heat Sources
- Heat Perimeter
- Intense Heat
- Scattered Heat
- 09/03/2017 Fire Perimeter

NAD 1983 UTM Zone 11N



46°45'N

46°40'N

46°35'N

46°45'N

46°40'N

46°35'N

114°25'W

114°20'W

114°15'W

114°10'W

114°5'W