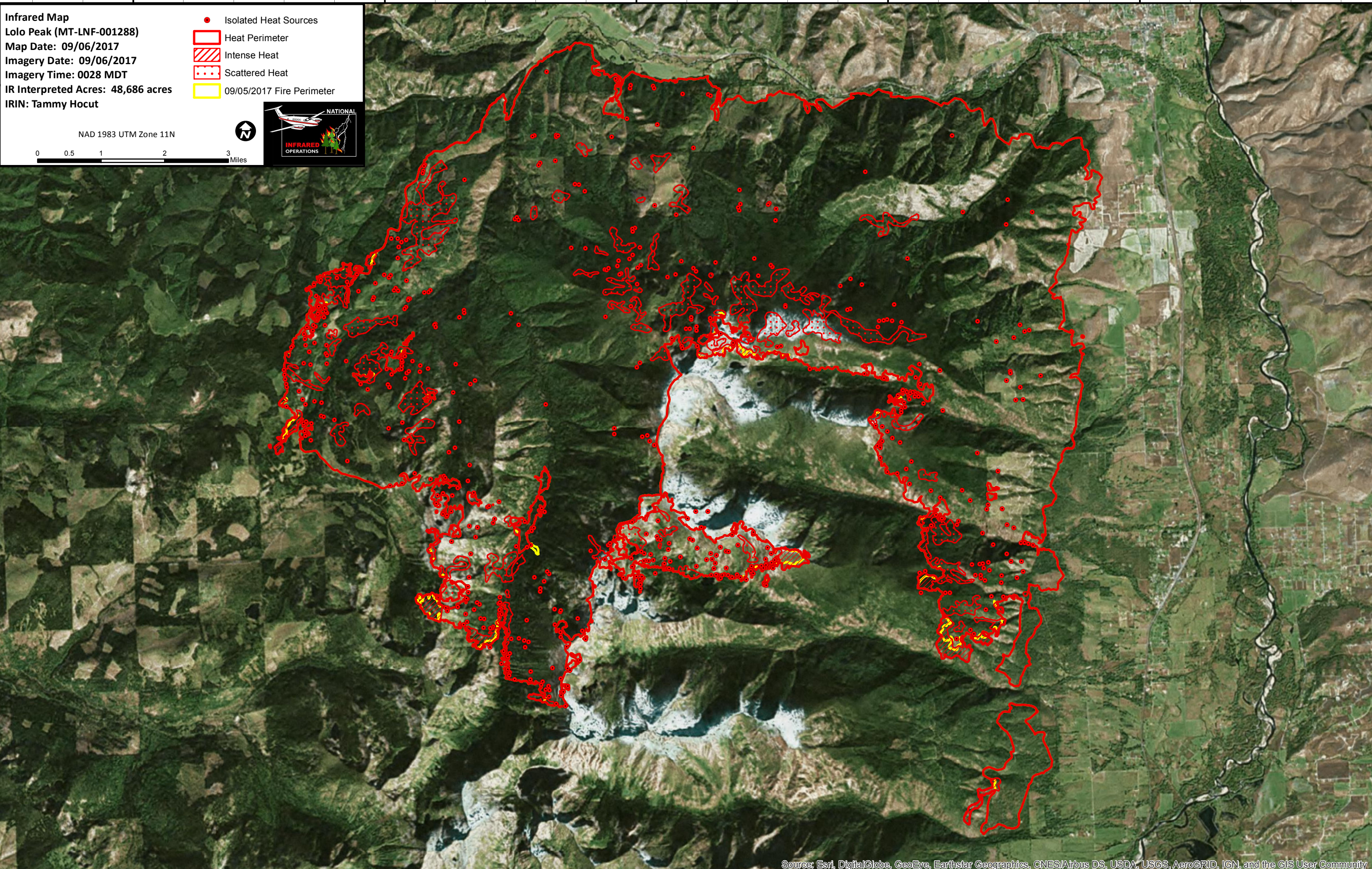
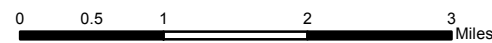


114°25'W 114°20'W 114°15'W 114°10'W 114°5'W

Infrared Map
Lolo Peak (MT-LNF-001288)
Map Date: 09/06/2017
Imagery Date: 09/06/2017
Imagery Time: 0028 MDT
IR Interpreted Acres: 48,686 acres
IRIN: Tammy Hocut

- Isolated Heat Sources
- Heat Perimeter
- Intense Heat
- Scattered Heat
- 09/05/2017 Fire Perimeter

NAD 1983 UTM Zone 11N



46°45'N

46°40'N

46°35'N

46°45'N

46°40'N

46°35'N

114°25'W 114°20'W 114°15'W 114°10'W 114°5'W