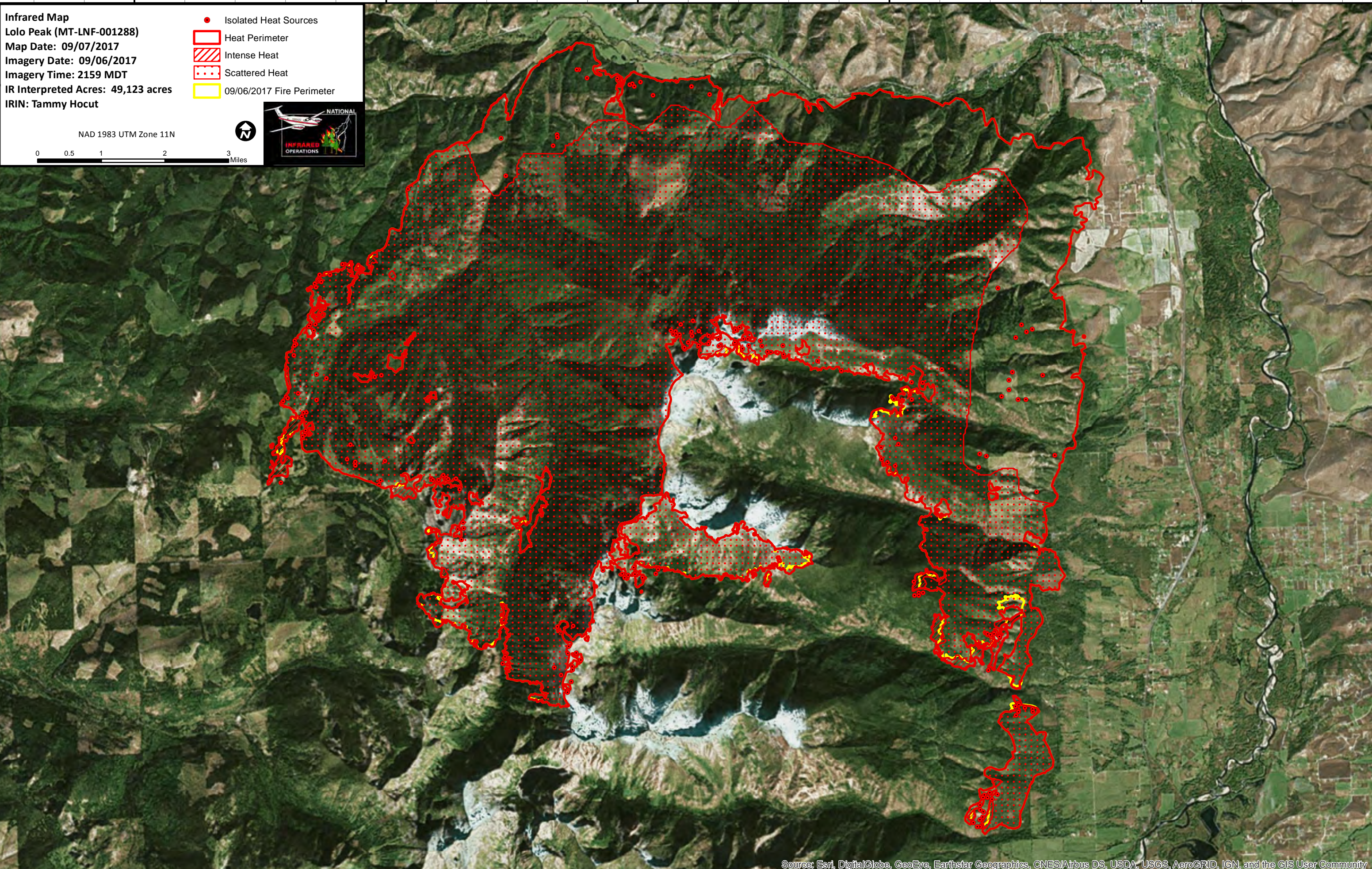
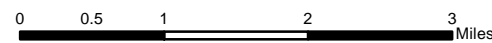


114°25'W 114°20'W 114°15'W 114°10'W 114°5'W

**Infrared Map**  
**Lolo Peak (MT-LNF-001288)**  
Map Date: 09/07/2017  
Imagery Date: 09/06/2017  
Imagery Time: 2159 MDT  
IR Interpreted Acres: 49,123 acres  
IRIN: Tammy Hocut

- Isolated Heat Sources
- Heat Perimeter
- Intense Heat
- Scattered Heat
- 09/06/2017 Fire Perimeter

NAD 1983 UTM Zone 11N



46°45'N

46°40'N

46°35'N

46°45'N

46°40'N

46°35'N

114°25'W 114°20'W 114°15'W 114°10'W 114°5'W