

114°25'W

114°20'W

114°15'W

114°10'W

114°5'W

114°0'W

Infrared Map

Lolo Peak (MT-LNF-001288)

Map Date: 09/08/2017

Imagery Date: 09/08/2017

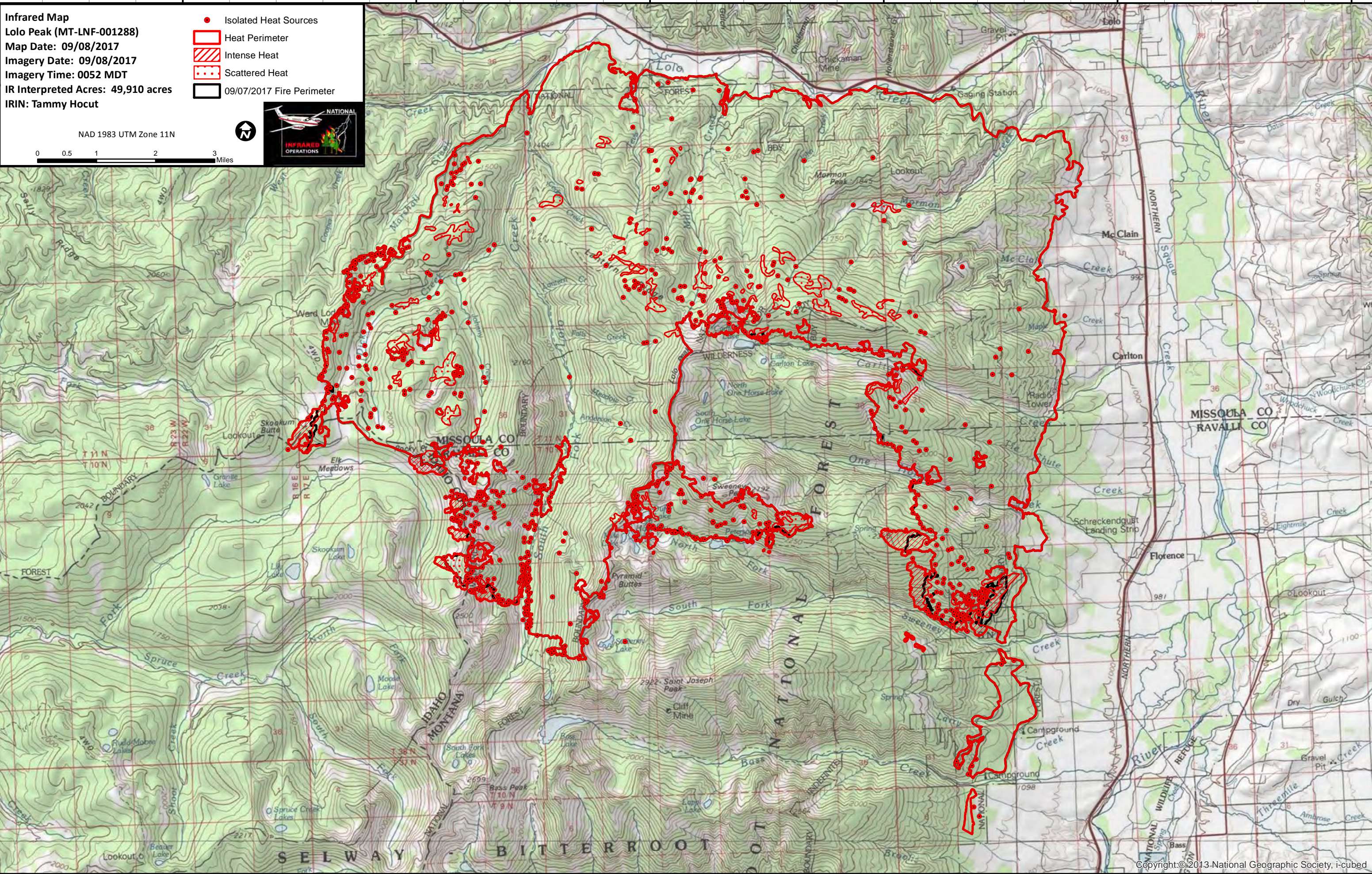
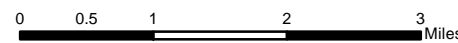
Imagery Time: 0052 MDT

IR Interpreted Acres: 49,910 acres

IRIN: Tammy Hocut

- Isolated Heat Sources
- Heat Perimeter
- Intense Heat
- Scattered Heat
- 09/07/2017 Fire Perimeter

NAD 1983 UTM Zone 11N



46°45'N

46°40'N

46°35'N

46°45'N

46°40'N

46°35'N

114°25'W

114°20'W

114°15'W

114°10'W

114°5'W