

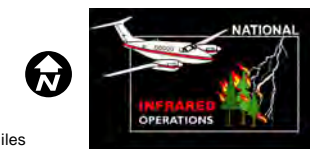
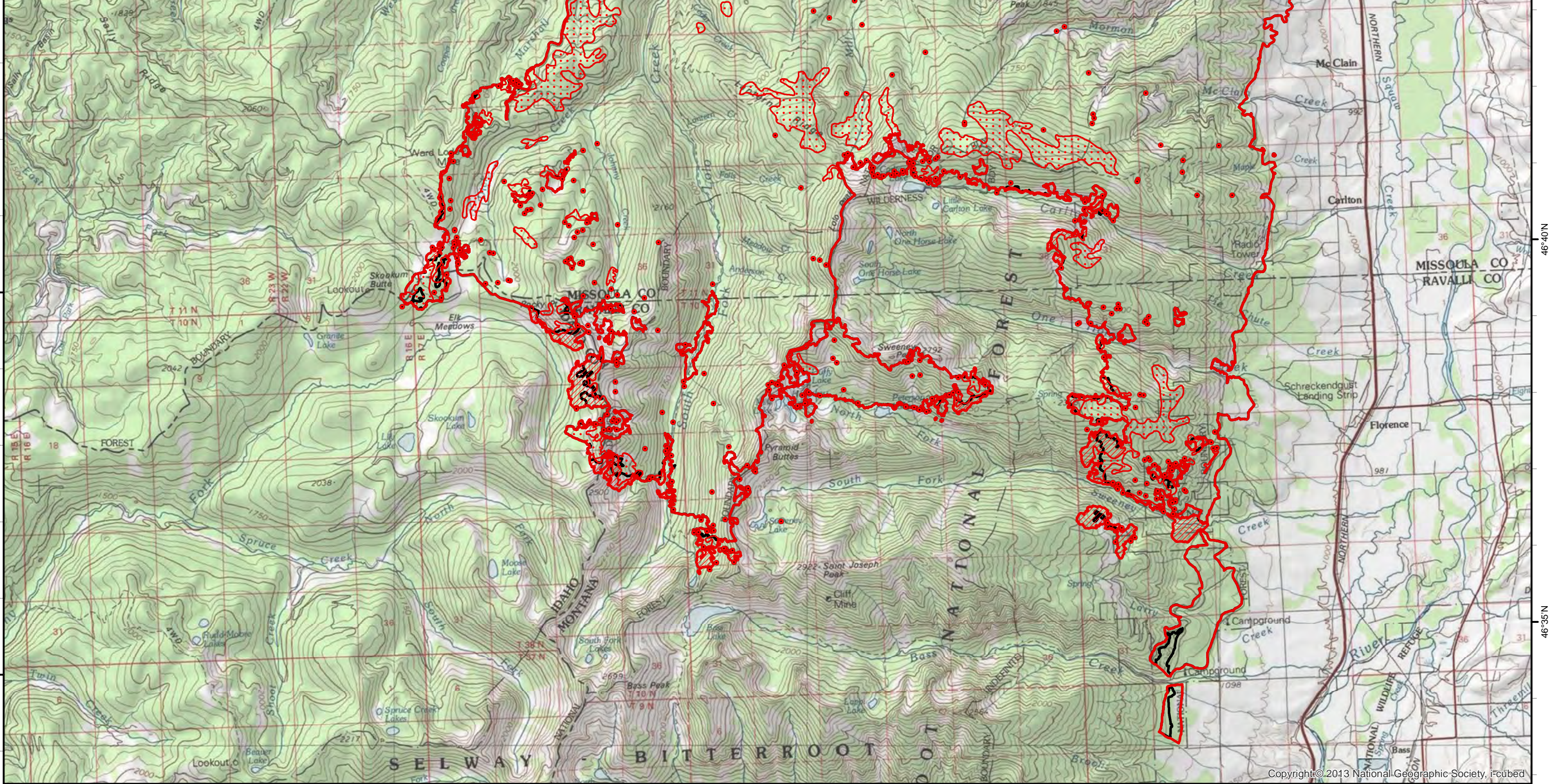
114°30'W 114°25'W 114°20'W 114°15'W 114°10'W 114°5'W

Infrared Map
Lolo Peak (MT-LNF-001288)
Map Date: 09/10/2017
Imagery Date: 09/09/2017
Imagery Time: 2205 MDT
IR Interpreted Acres: 51,001 acres
IRIN: Tammy Hocut

- Isolated Heat Sources
- Heat Perimeter
- Intense Heat
- Scattered Heat
- 09/09/2017 Fire Perimeter

NAD 1983 UTM Zone 11N

0 0.5 1 2 3 Miles

114°30'W 114°25'W 114°20'W 114°15'W 114°10'W 114°5'W