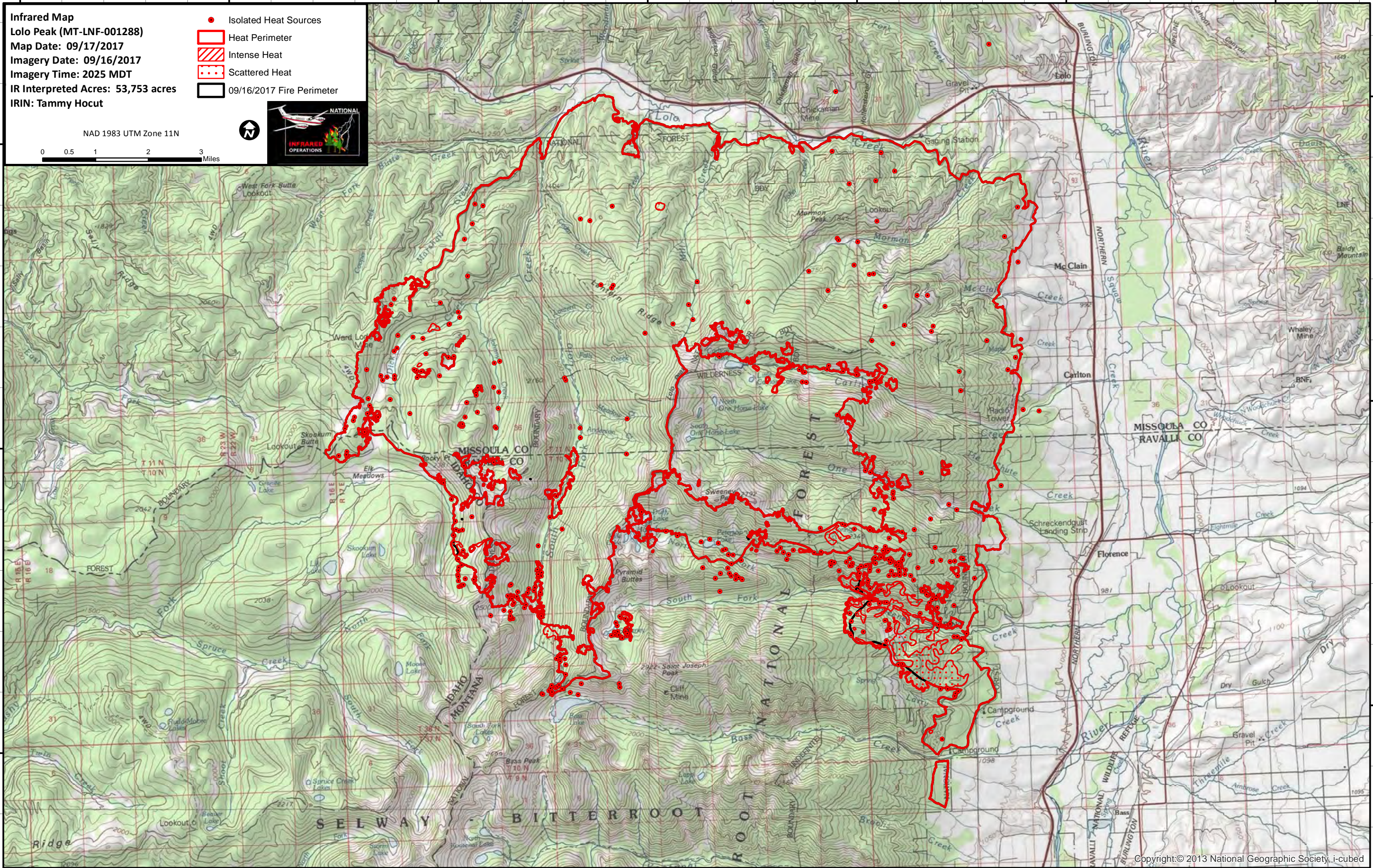
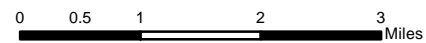


114°30'W 114°25'W 114°20'W 114°15'W 114°10'W 114°5'W 114°0'W

**Infrared Map**  
**Lolo Peak (MT-LNF-001288)**  
**Map Date: 09/17/2017**  
**Imagery Date: 09/16/2017**  
**Imagery Time: 2025 MDT**  
**IR Interpreted Acres: 53,753 acres**  
**IRIN: Tammy Hocut**

- Isolated Heat Sources
- Heat Perimeter
- Intense Heat
- Scattered Heat
- 09/16/2017 Fire Perimeter

NAD 1983 UTM Zone 11N



114°30'W 114°25'W 114°20'W 114°15'W 114°10'W 114°5'W 114°0'W

46°45'N

46°40'N

46°35'N

46°45'N

46°40'N

46°35'N