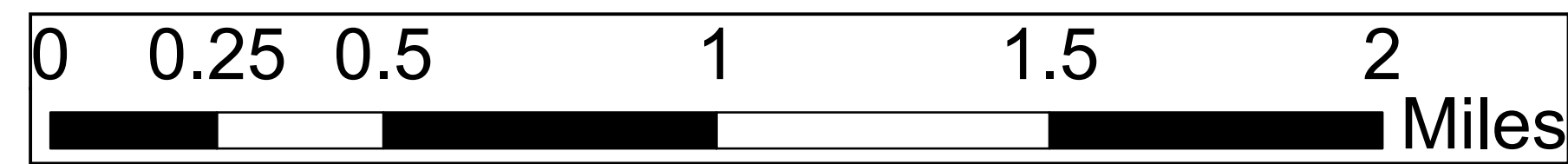


Lookout Fire

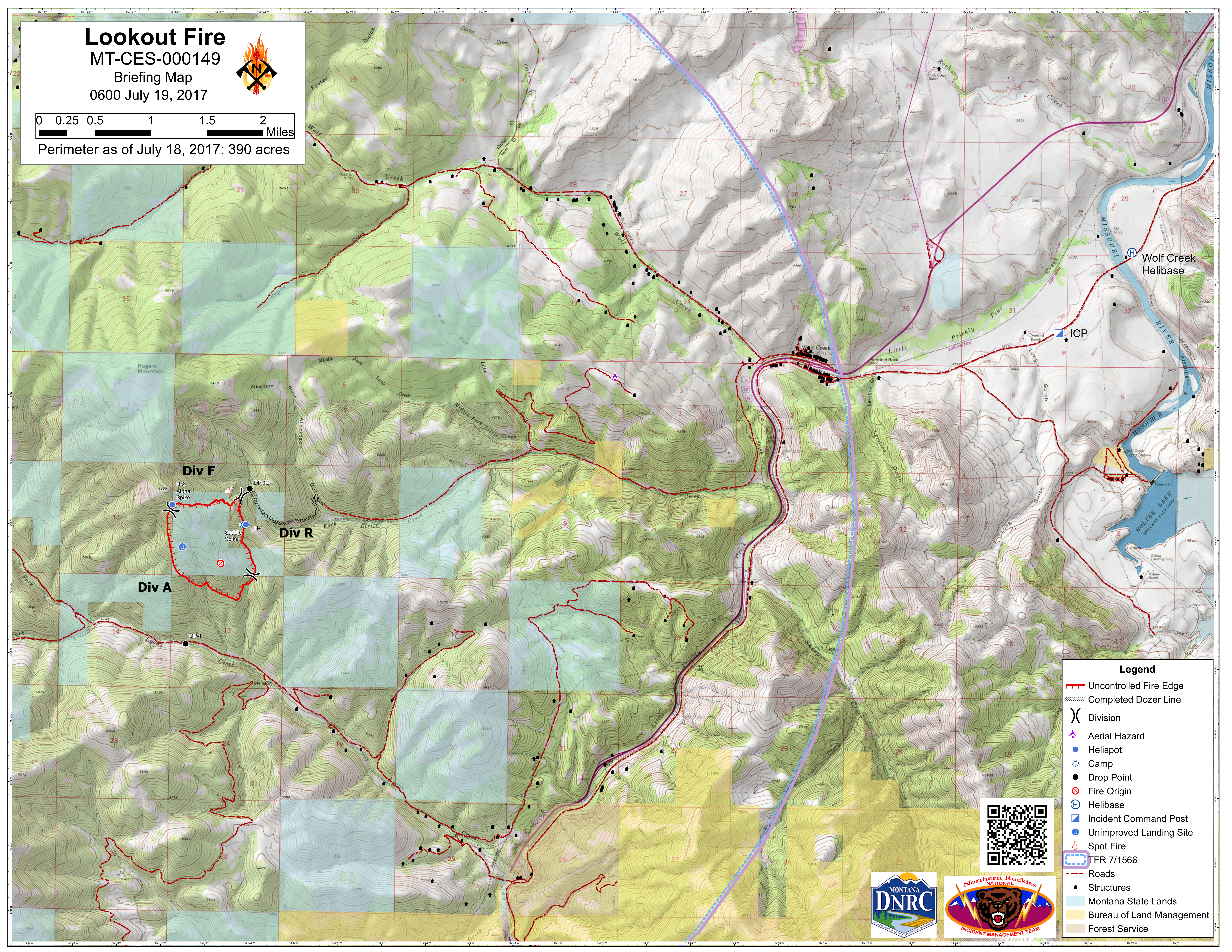
MT-CES-000149

Briefing Map

0600 July 19, 2017



Perimeter as of July 18, 2017: 390 acres



Legend

- Uncontrolled Fire Edge
- Completed Dozer Line
- Division
- Aerial Hazard
- Helispot
- Camp
- Drop Point
- Fire Origin
- Helibase
- Incident Command Post
- Unimproved Landing Site
- Spot Fire
- TFR 7/1566
- Roads
- Structures
- Montana State Lands
- Bureau of Land Management
- Forest Service

