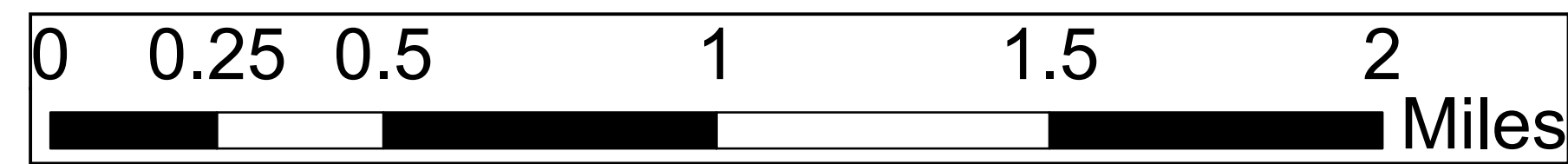


Lookout Fire

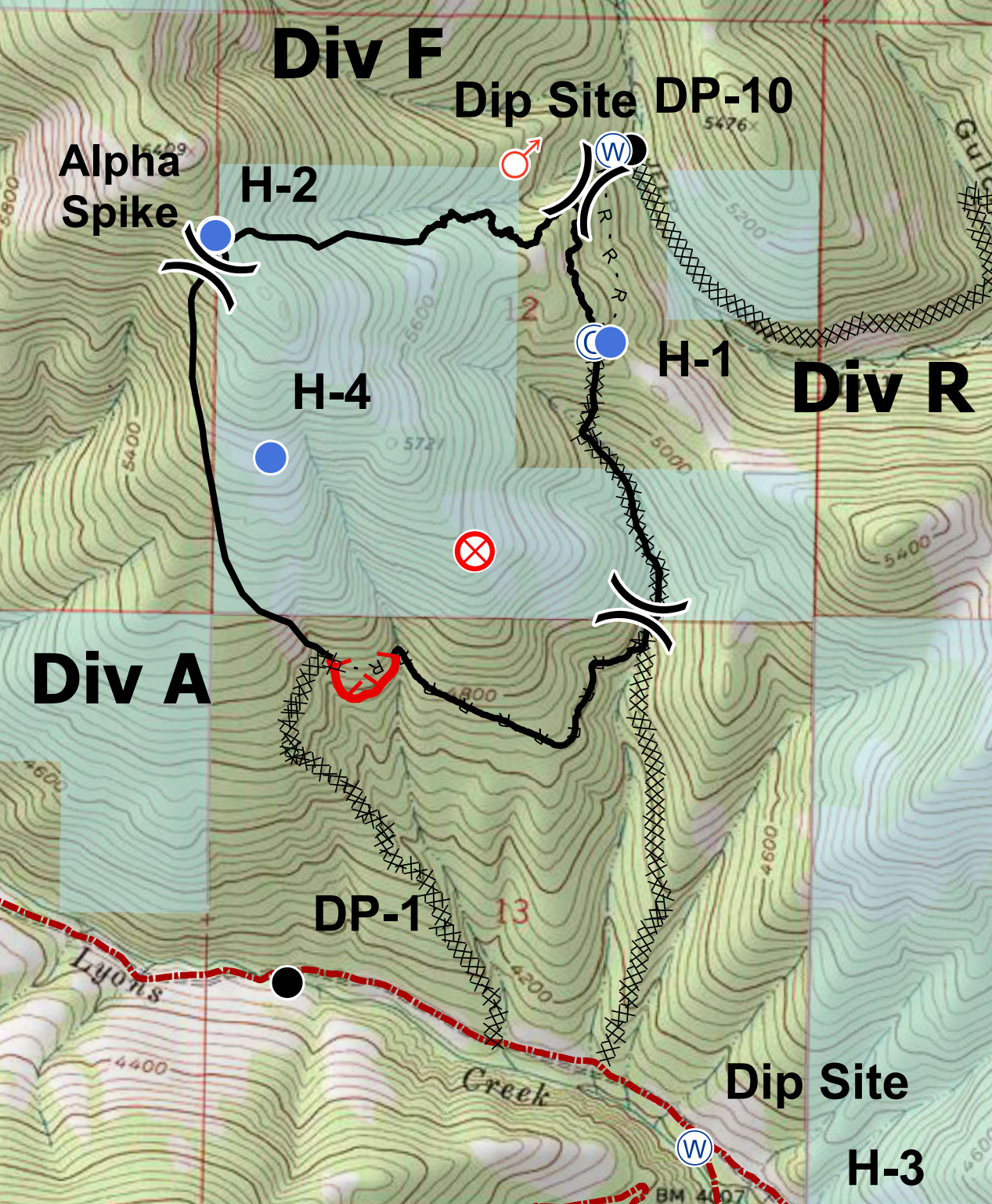
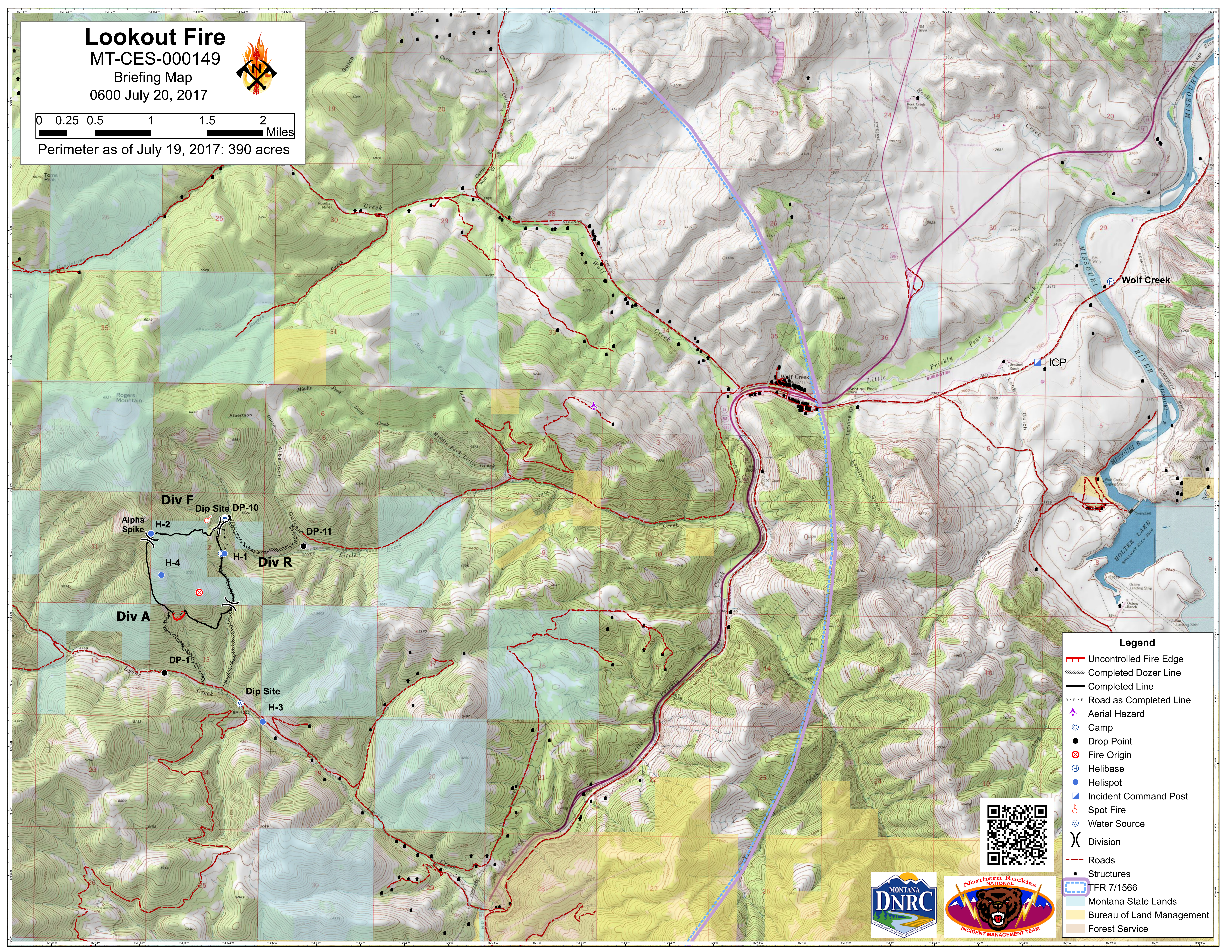
MT-CES-000149

Briefing Map

0600 July 20, 2017



Perimeter as of July 19, 2017: 390 acres



Legend

- Uncontrolled Fire Edge
- Completed Dozer Line
- Completed Line
- Road as Completed Line
- Aerial Hazard
- Camp
- Drop Point
- Fire Origin
- Helibase
- Helispot
- Incident Command Post
- Spot Fire
- Water Source
- Division
- Roads
- Structures
- TFR 7/1566
- Montana State Lands
- Bureau of Land Management
- Forest Service

