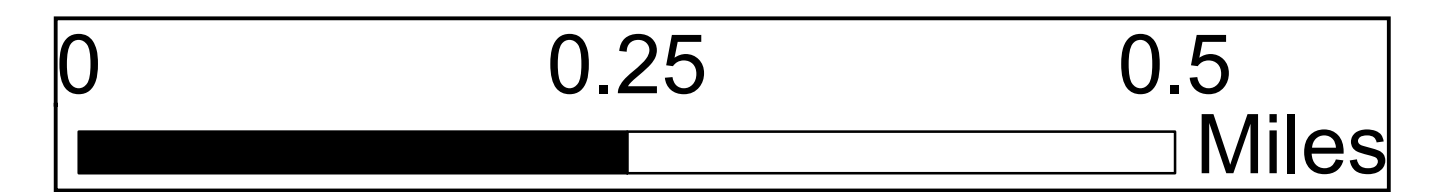


Lookout Fire

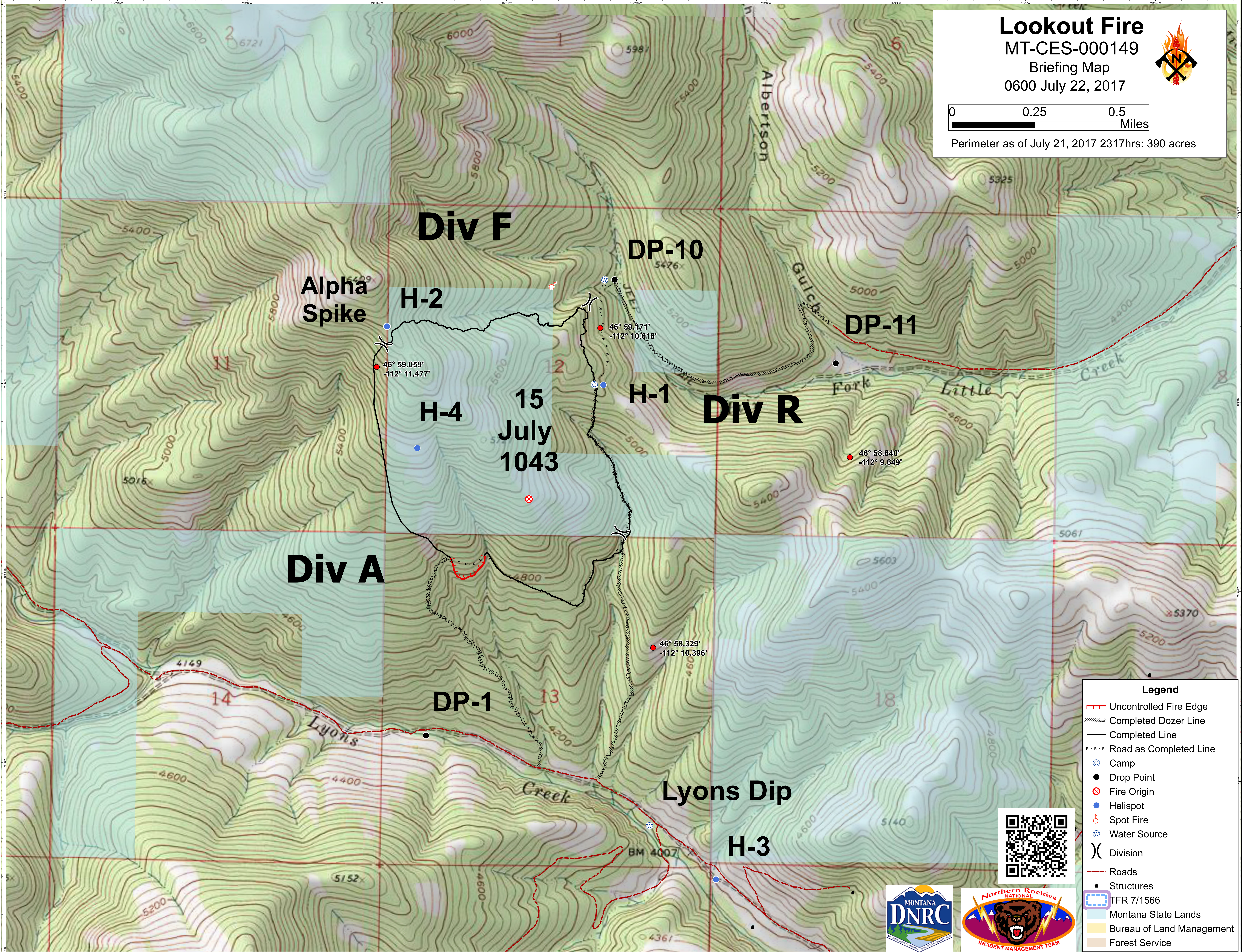
MT-CES-000149

Briefing Map

0600 July 22, 2017



Perimeter as of July 21, 2017 2317hrs: 390 acres



Legend

- Uncontrolled Fire Edge
- Completed Dozer Line
- Completed Line
- R-R-R Road as Completed Line
- Camp
- Drop Point
- Fire Origin
- Helispot
- Spot Fire
- Water Source
- Division
- Roads
- Structures
- TFR 7/1566
- Montana State Lands
- Bureau of Land Management
- Forest Service

